

# Yolo County Weekly Wages

Focus on Post-Recession Recovery

## Q4 –2025 Update

Produced by

National Economic Education Delegation

June 27, 2026

Jon Haveman, Executive Director

415-336-5705 or [Jon@NEEDEcon.org](mailto:Jon@NEEDEcon.org)

## Contents

1. Overview of Wage Changes Since the Onset of the COVID Pandemic	2
2. Weekly Wages Over Time	3
3. Graphical Display of Weekly Wage Evolution by Industry (Super Sector)	4
4. Descriptions and References	9



# 1. Overview of Wage Changes Since the Onset of the COVID Pandemic

Figure 1 - 1: Average Weekly Wages

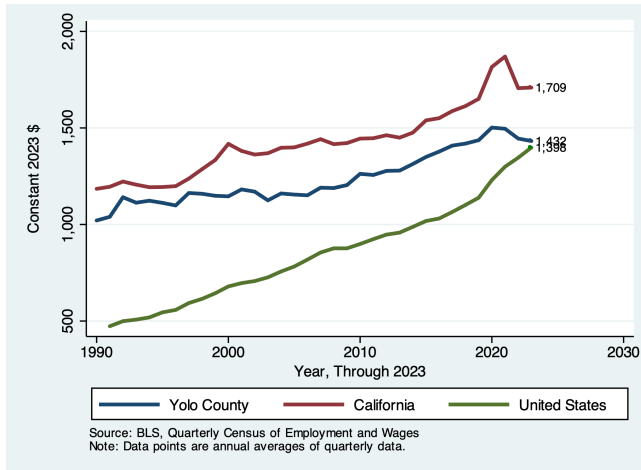


Figure 1 - 2: Wage Growth Through the Pandemic

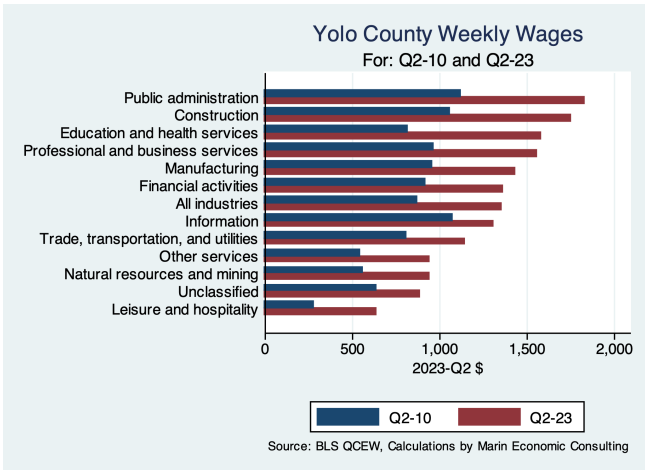


Table 1.1: Quarterly Summary for Q4 –2025

Sector	Levels in Q4 –2025		Relative to:		Change vs Q4 in 2019		Relative to:	
	Employment	Wages	Bay	U.S.	Employment	Wages	Bay	U.S.
Public administration	7,727	1,832.8	1.0	1.2	3,314	715.23	0.09	0.12
Construction	5,369	1,752.0	1.1	1.2	1,849	697.00	0.05	0.07
Education and health services	33,299	1,578.1	1.2	1.3	21,450	760.17	0.34	0.34
Professional and business services	9,558	1,554.0	0.7	0.9	2,570	593.35	-0.07	-0.01
Manufacturing	6,877	1,435.0	0.6	0.9	2,070	482.00	-0.10	0.05
Financial activities	2,499	1,359.5	0.6	0.7	-462	441.55	-0.11	-0.04
Information	841	1,308.4	0.3	0.5	-164	237.39	-0.32	-0.35
Trade, transportation, and utilities	24,790	1,142.5	0.9	1.0	4,936	335.34	-0.08	-0.06
Other services	2,447	938.6	0.9	1.0	-833	398.04	-0.14	0.01
Natural resources and mining	5,407	938.0	1.1	0.7	-279	376.00	0.01	0.11
Unclassified	124	888.0	0.7	0.6	47	253.00	0.02	-0.08
Leisure and hospitality	10,491	633.9	0.9	1.1	3,893	358.85	0.24	0.30
<b>Total</b>	<b>109,428</b>	<b>1,351.0</b>	<b>0.8</b>	<b>1.0</b>	<b>19,545</b>	<b>482.00</b>	<b>-0.05</b>	<b>0.01</b>

Source: BLS, QCEW; Calculations by National Economic Education Delegation

## 2. Weekly Wages Over Time

**Table2.1: Summary of Weekly Wages versus the Bay Area as A Whole**

Sector	Q4 –2025		Relative Wages: Q4 of Each Year					
	Employment	Wages	1990	2001	2004	2007	2019	2025
Public administration	7,727	1,832.8	0.69	0.80	0.65	0.66	0.73	0.82
Construction	5,369	1,752.0	0.85	0.90	0.91	0.96	0.89	0.91
Education and health services	33,299	1,578.1	0.97	0.86	0.72	0.71	0.72	1.00
Professional and business services	9,558	1,554.0	0.73	0.72	0.51	0.63	0.56	0.46
Manufacturing	6,877	1,435.0	0.70	0.61	0.61	0.49	0.46	0.35
Financial activities	2,499	1,359.5	0.61	0.69	0.51	0.52	0.49	0.37
All industries	109,428	1,351.0	0.76	0.78	0.66	0.65	0.64	0.54
Information	841	1,308.4	0.72	0.69	0.77	0.43	0.41	0.20
Trade, transportation, and utilities	24,790	1,142.5	0.85	0.85	0.77	0.82	0.81	0.70
Other services	2,447	938.6	0.94	0.95	0.89	0.93	0.98	0.79
Natural resources and mining	5,407	938.0	0.68	0.72	0.77	0.83	0.78	0.85
Unclassified	124	888.0			0.26	0.29	0.92	0.68
Leisure and hospitality	10,491	633.9	0.69	0.67	0.58	0.63	0.56	0.80

Source: BLS, QCEW; Calculations by National Economic Education Delegation

**Table2.2: Summary of Weekly Wages versus California as A Whole**

Sector	Q4 –2025		Relative Wages: Q4 of Each Year					
	Employment	Wages	1990	2001	2004	2007	2019	2025
Public administration	7,727	1,832.8	0.75	0.84	0.72	0.77	0.83	0.95
Construction	5,369	1,752.0	0.97	1.03	1.10	1.14	1.04	1.10
Education and health services	33,299	1,578.1	0.98	0.91	0.79	0.81	0.81	1.19
Professional and business services	9,558	1,554.0	0.80	0.90	0.71	0.87	0.78	0.70
Manufacturing	6,877	1,435.0	0.87	0.82	0.93	0.74	0.72	0.61
Financial activities	2,499	1,359.5	0.67	0.79	0.65	0.62	0.62	0.57
All industries	109,428	1,351.0	0.86	0.93	0.87	0.84	0.83	0.83
Information	841	1,308.4	0.77	0.75	0.97	0.59	0.58	0.31
Trade, transportation, and utilities	24,790	1,142.5	0.94	0.95	0.90	0.93	0.93	0.89
Other services	2,447	938.6	1.00	1.05	1.07	1.12	1.15	0.93
Natural resources and mining	5,407	938.0	0.99	1.10	1.27	1.12	1.06	1.07
Unclassified	124	888.0			0.40	0.50	0.92	0.66
Leisure and hospitality	10,491	633.9	0.70	0.70	0.62	0.64	0.60	0.87

Source: BLS, QCEW; Calculations by National Economic Education Delegation

**Table2.3: Summary of Weekly Wages versus the United States as A Whole**

Sector	Q4 –2025		Relative Wages: Q4 of Each Year					
	Employment	Wages	1990	2001	2004	2007	2019	2025
Public administration	7,727	1,832.8	0.90	1.08	0.89	0.95	1.06	1.20
Construction	5,369	1,752.0	1.10	1.16	1.22	1.25	1.15	1.23
Education and health services	33,299	1,578.1	1.07	0.98	0.88	0.90	0.92	1.30
Professional and business services	9,558	1,554.0	0.84	0.99	0.82	0.98	0.87	0.87
Manufacturing	6,877	1,435.0	0.96	0.92	1.12	0.86	0.89	0.94
Financial activities	2,499	1,359.5	0.72	0.85	0.72	0.71	0.70	0.69
All industries	109,428	1,351.0	0.94	1.03	0.99	0.95	0.95	1.01
Information	841	1,308.4	0.85	0.87	1.17	0.79	0.78	0.48
Trade, transportation, and utilities	24,790	1,142.5	1.09	1.08	1.03	1.06	1.04	1.01
Other services	2,447	938.6	1.06	1.04	1.05	1.07	1.06	0.98
Natural resources and mining	5,407	938.0	0.69	0.72	0.87	0.77	0.67	0.75
Unclassified	124	888.0			0.39	0.47	0.98	0.64
Leisure and hospitality	10,491	633.9	0.84	0.81	0.73	0.79	0.72	1.05

Source: BLS, QCEW; Calculations by National Economic Education Delegation

### 3. Graphical Display of Weekly Wage Evolution by Industry (Super Sector)

Graphs are for the top 10 NAICS 2-digit industries and present only Q4 data for each year.

Figure 3 - 1: 1028: Public administration

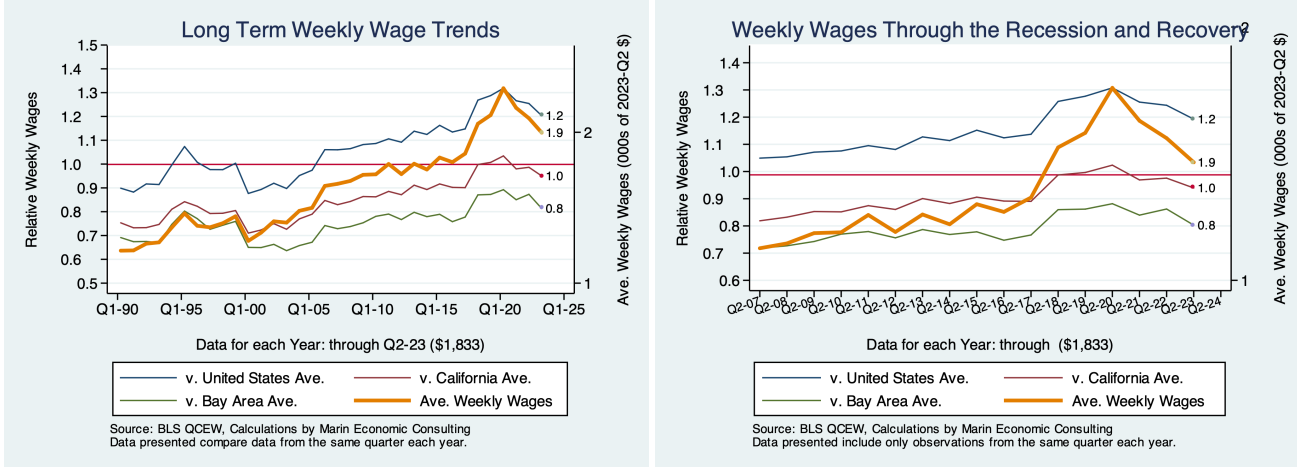


Figure 3 - 2: 1028: Public administration

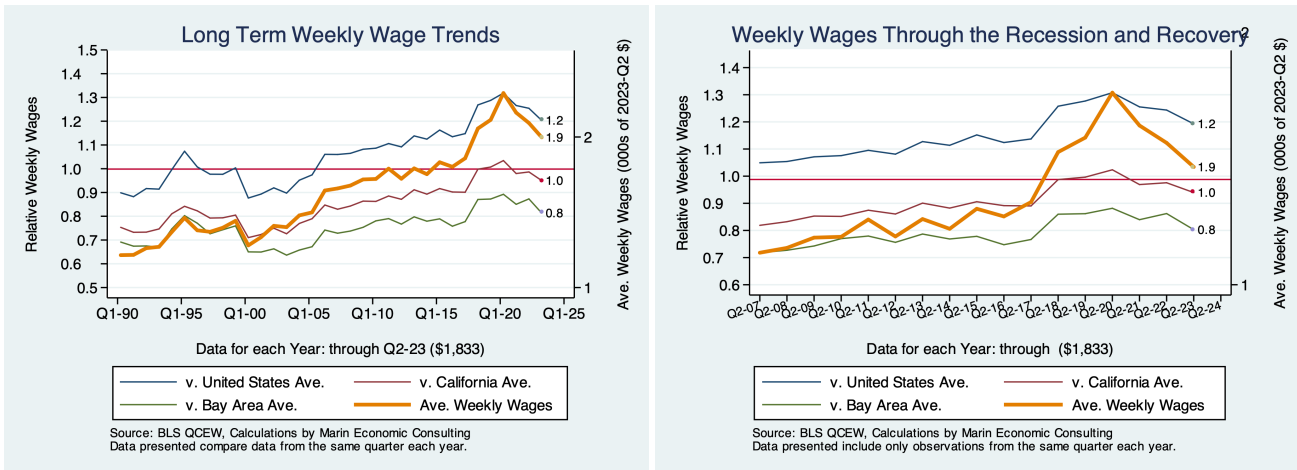


Figure 3 - 3: 1012: Construction

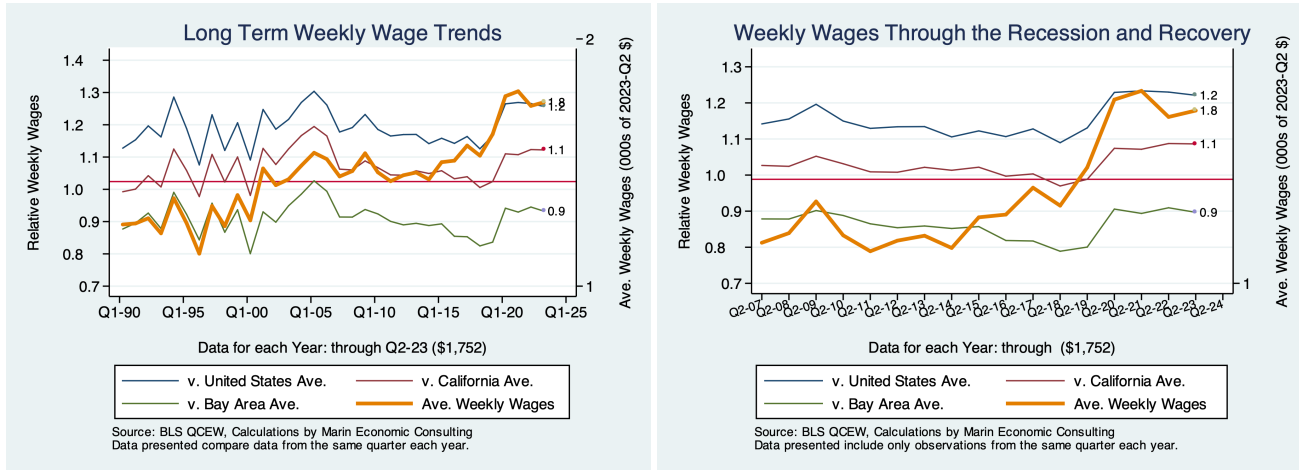


Figure 3 - 4: 1012: Construction

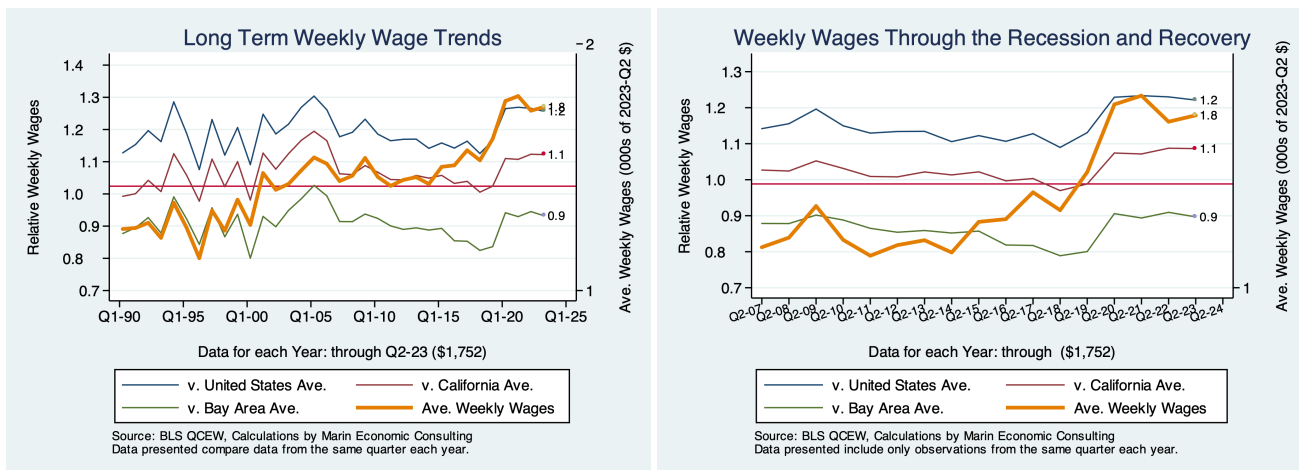


Figure 3 - 5: 1025: Education and health services

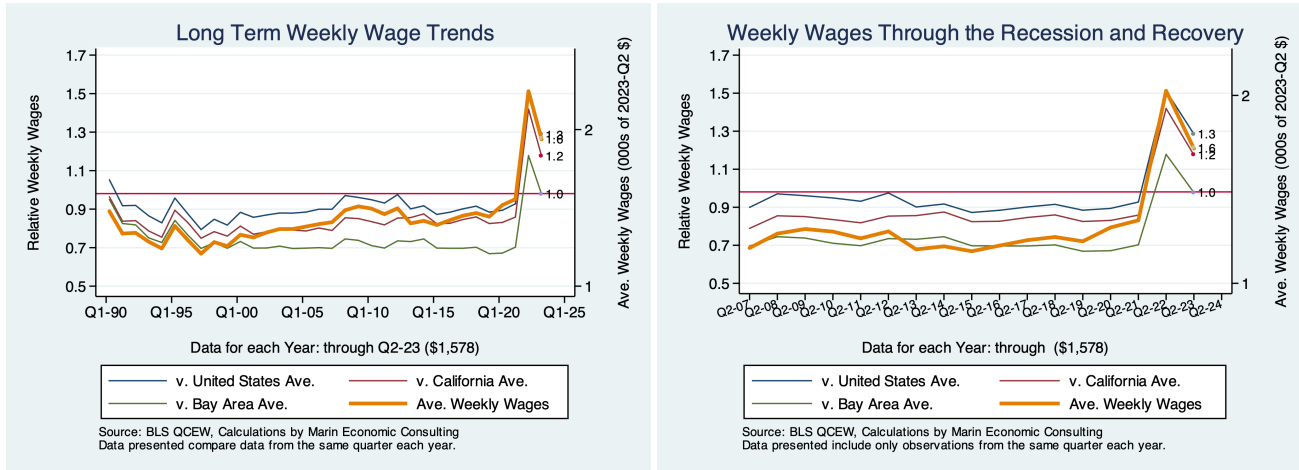


Figure 3 - 6: 1025: Education and health services

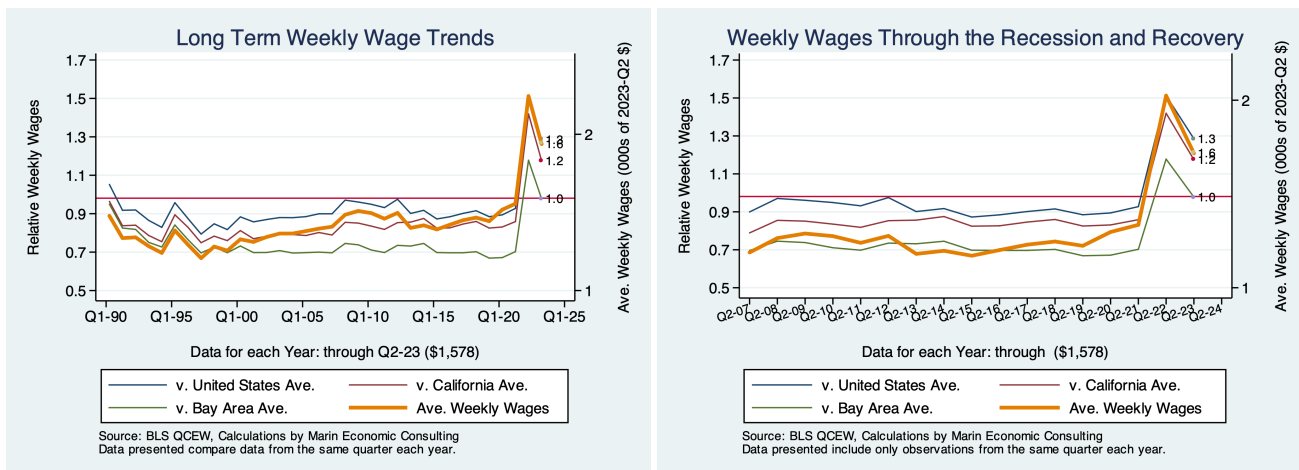


Figure 3 - 7: 1024: Professional and business services

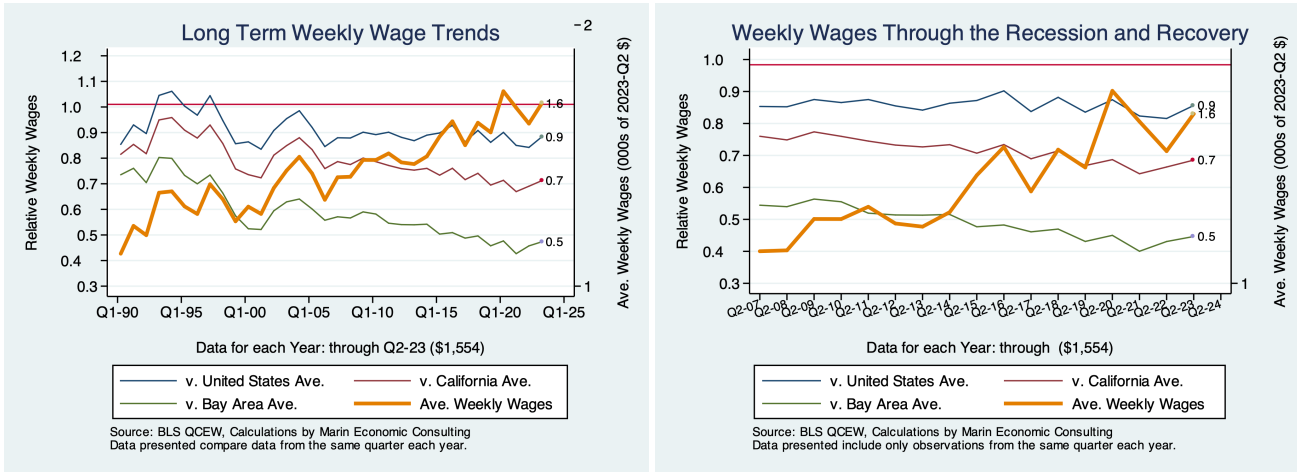


Figure 3 - 8: 1024: Professional and business services

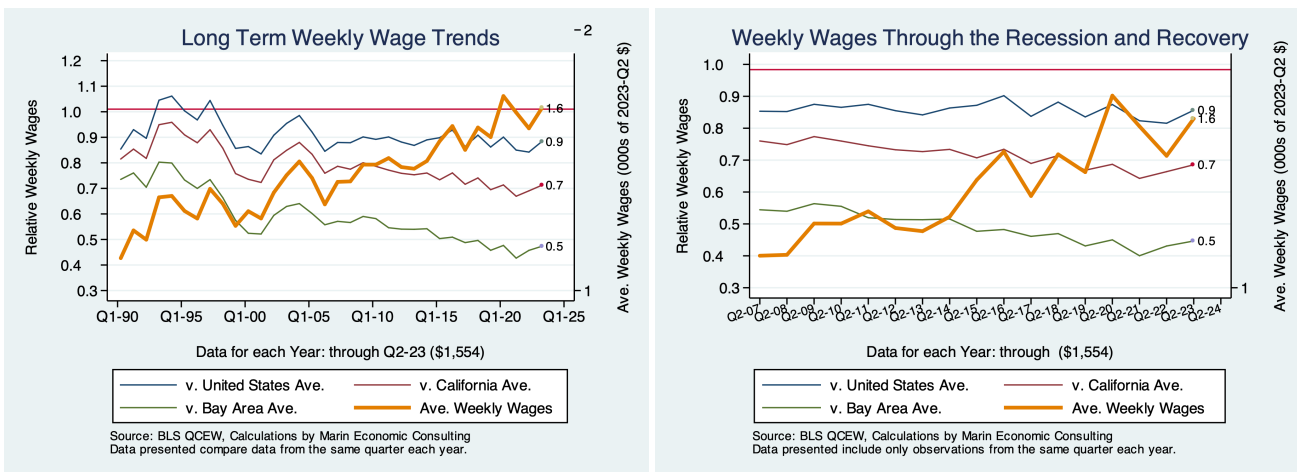


Figure 3 - 9: 1013: Manufacturing

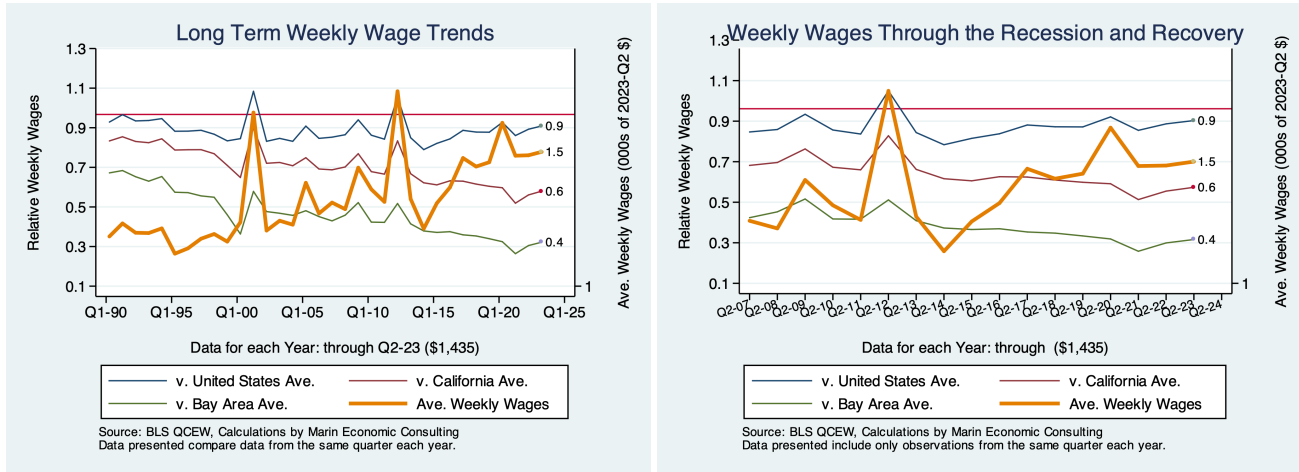
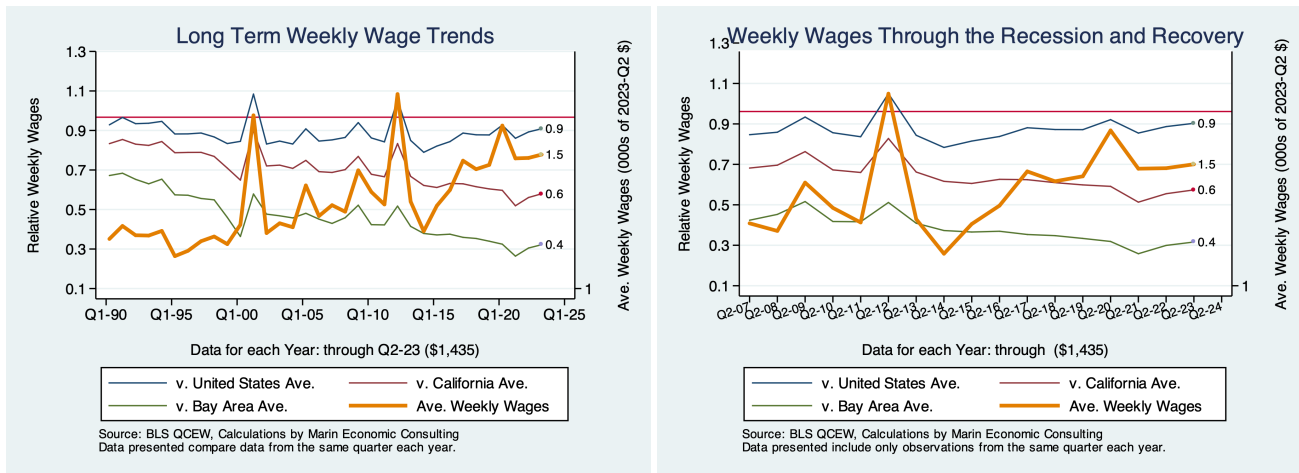


Figure 3 - 10: 1013: Manufacturing



## 4. Descriptions and References

The contents of this report illustrate the evolution of Yolo County wage patterns over time. This report presents:

**Wages:** Average weekly wages for the industry in the region. They are inflation adjusted to current dollars using: Consumer Price Index for All Urban Consumers: All Items, from the FRED Database maintained by the St. Louis Federal Reserve Bank.

The data underlying this report are from the Bureau of Labor Statistics: Quarterly Census of Employment and Wages (QCEW). These data are available on a quarterly basis, generally with a 5 month lag from the end of the quarter to the release of the data.

**QCEW:** The Quarterly Census of Employment and Wages (QCEW) program publishes a quarterly count of employment and wages reported by employers covering 98 percent of U.S. jobs, available at the county, MSA, state and national levels by industry. <http://www.bls.gov/cew/home.htm>

**Time Period:** The data extend from Q1-1990 through Q4 -2025

**Seasonality:** There is a significant seasonal component to many industries. The QCEW data are not seasonally adjusted. Rather than seasonally adjusting the data, most comparisons in this report are between the same quarter in different years. The data presented are therefore the actual employment levels and wages (inflation adjusted) compared across years.

A particular focus of this report is on the post-Pandemic recovery. This is accomplished by comparing the most recent quarter of data to the same quarter in 2007, the last non-recessionary year for most of California and the United States.

Notes:

**Notes:** There are occasions where the data displayed seem to reflect implausible increases in either employment or wages. These changes are as reported in the QCEW data. For a closer look at these changes, please contact: [Jon@NEEDEcon.org](mailto:Jon@NEEDEcon.org)