

# Sutter County Manufacturing Industry Evolution

Focus on Post-Recession Recovery

Q4 -2025 Update

Produced by

National Economic Education Delegation

June 27, 2026

Jon Haveman, Executive Director

415-336-5705 or [Jon@NEEDEcon.org](mailto:Jon@NEEDEcon.org)

## Contents

1. Manufacturing Sector Employment Growth Since 1990	2
2. Overview of Employment Changes Since the Onset of the COVID Pandemic	3
3. Graphical Display of 4-digit Location Quotient Evolution by Industry	4

# 1. Manufacturing Sector Employment Growth Since 1990

**Table 1.1: Manufacturing Employment Summary for Q4 -2025**

	Share of Total Empl	Current Employment	Inc. Over Last Qtr (#)	Percent Growth Relative to:				
				Last Qtr	Last Year	Q4-19	Q1-10	.COM Peak*
Sutter County	1.3	428	-18	-4.0	-2.1	-27.8	3.9	-79.0
California	6.5	1,203,206	-19,130	-1.6	-2.4	-8.8	-1.1	-30.6
United States	8.0	12,562,052	-73,168	-0.6	-1.1	-1.8	10.5	-23.0

Source: BLS, QCEW; Calculations by National Economic Education Delegation

\* .COM Peak refers to the quarter of peak employment for Sutter County during the Tech bubble.

Figure 1 - 1: Manufacturing Employment Growth Comparison with California and U.S.

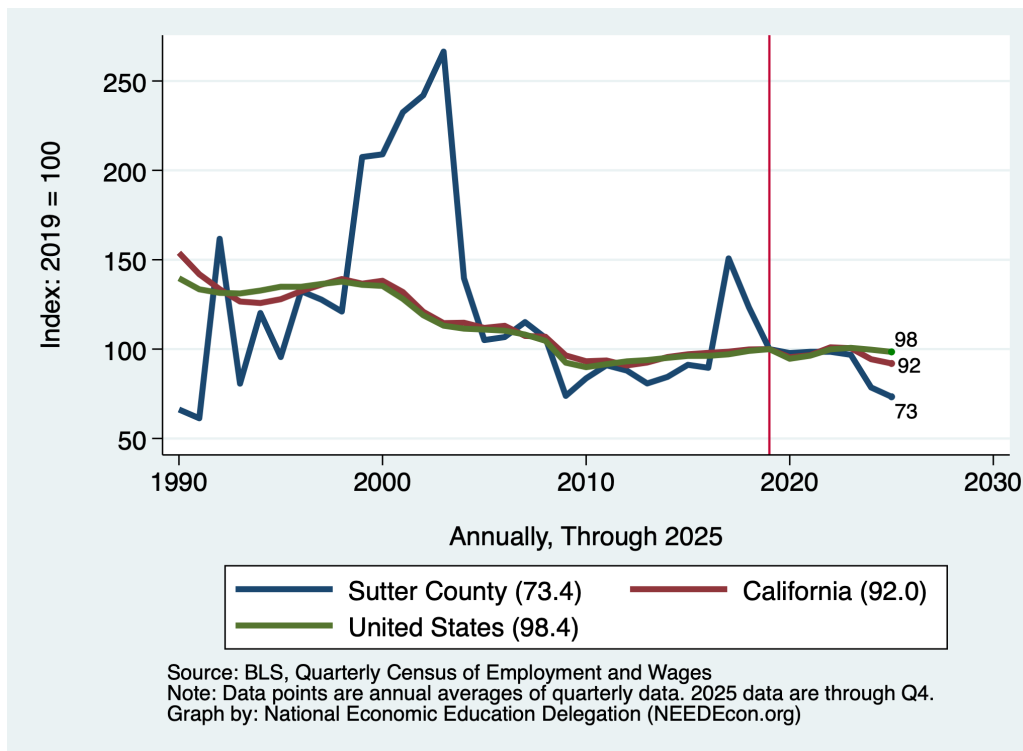


Figure 1 - 2: Employment Growth

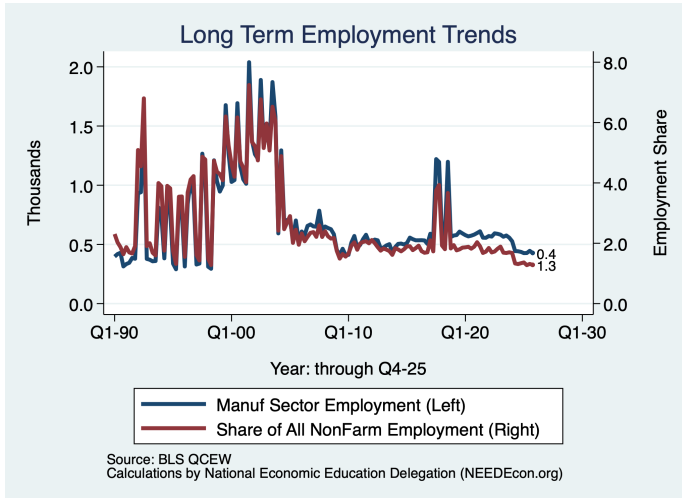
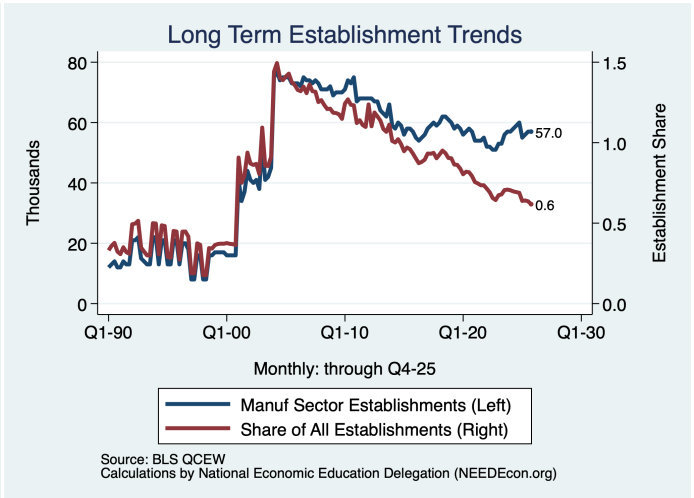
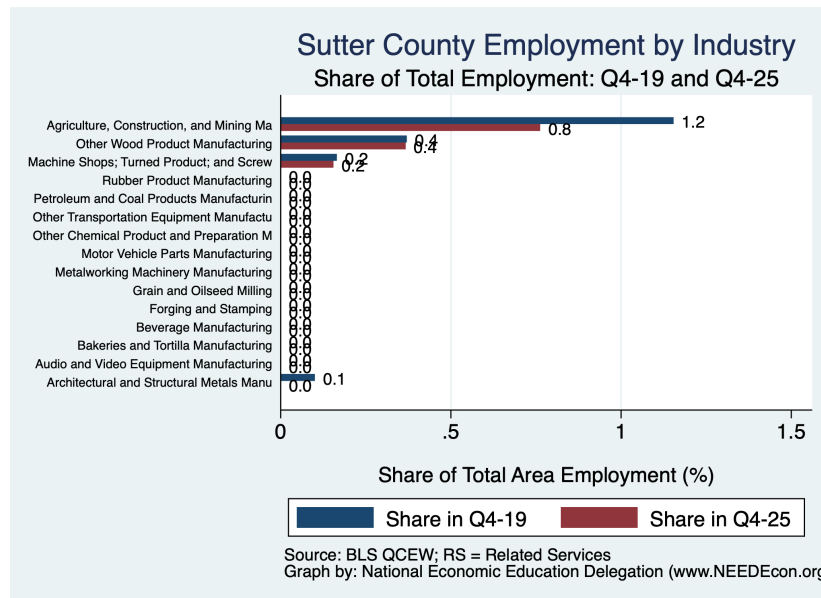


Figure 1 - 3: Establishment Growth



## 2. Overview of Employment Changes Since the Onset of the COVID Pandemic

Figure 2 - 1: 4-Digit Manufacturing Sector Shares



### 3. Graphical Display of 4-digit Location Quotient Evolution by Industry

Graphs present only Q4 data for each year for the 10 4-digit NAICS sectors with the largest share of total employment.

Figure 3 - 1: 31-33: Manufacturing

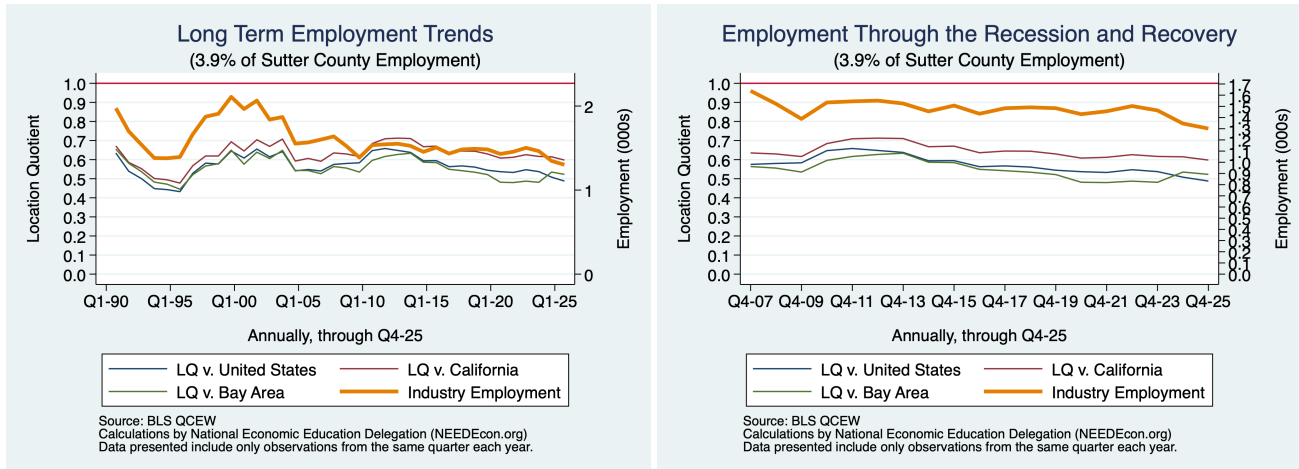


Figure 3 - 2: 333: Machinery Manufacturing

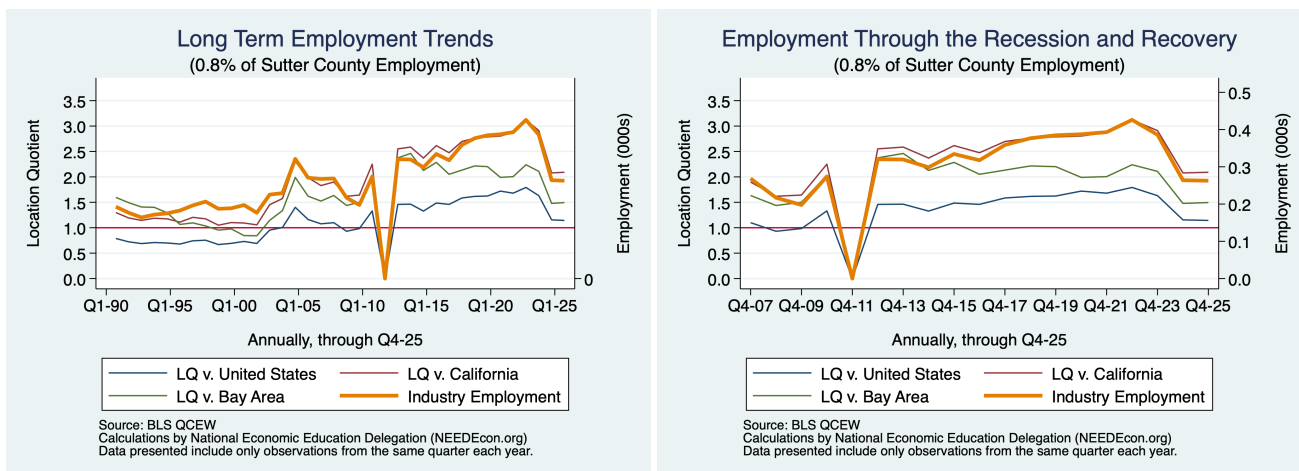


Figure 3 - 3: 3331: Agriculture, Construction, and Mining Machinery Manufacturing

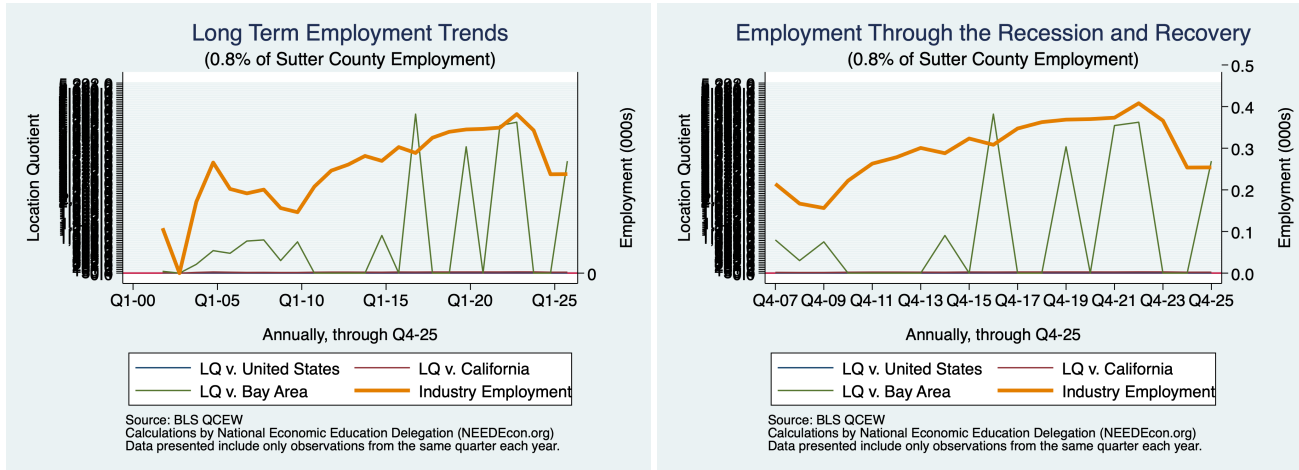


Figure 3 - 4: 321: Wood Product Manufacturing

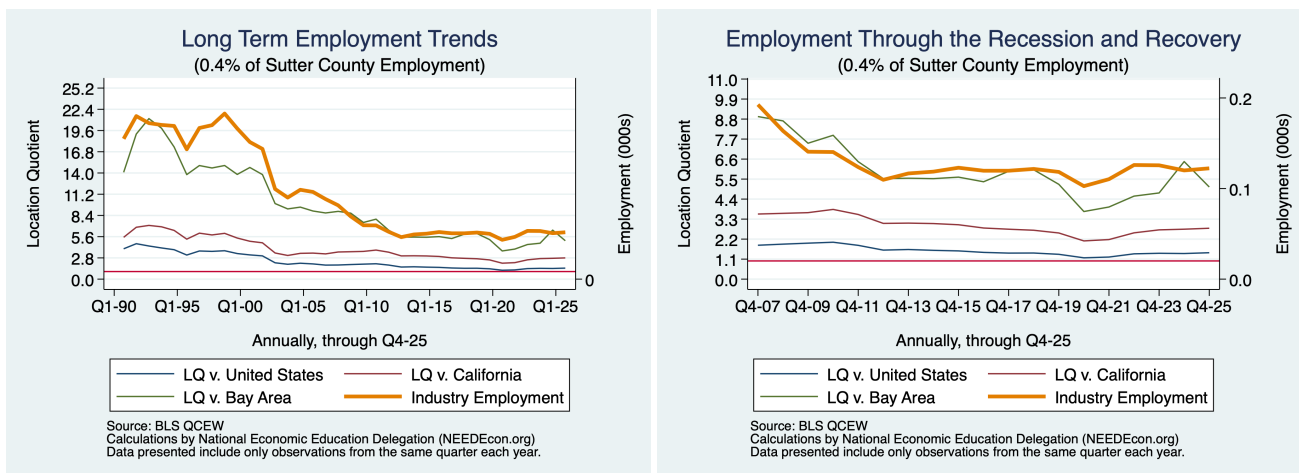


Figure 3 - 5: 3219: Other Wood Product Manufacturing

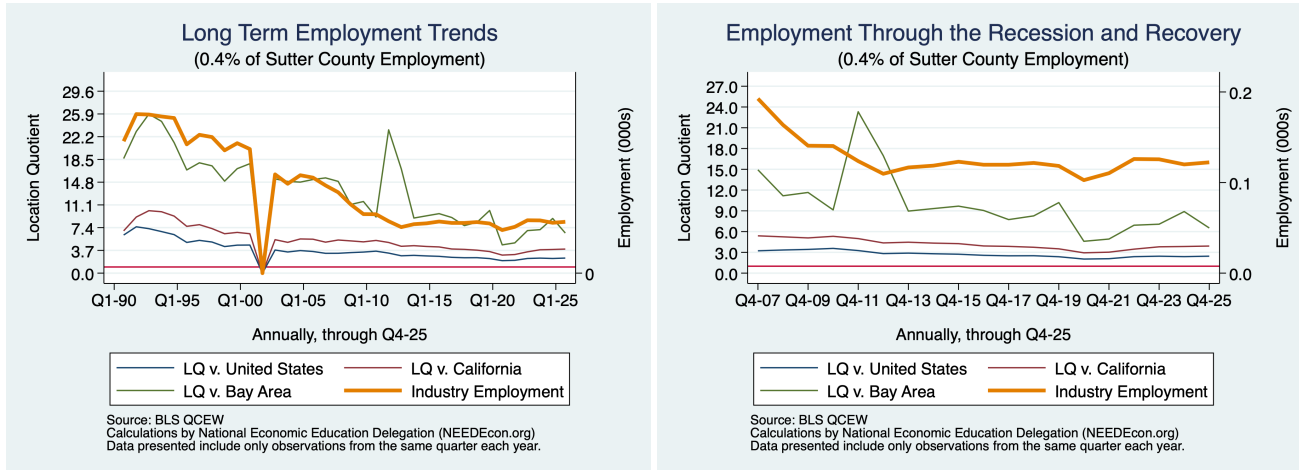


Figure 3 - 6: 332: Fabricated Metal Product Manufacturing

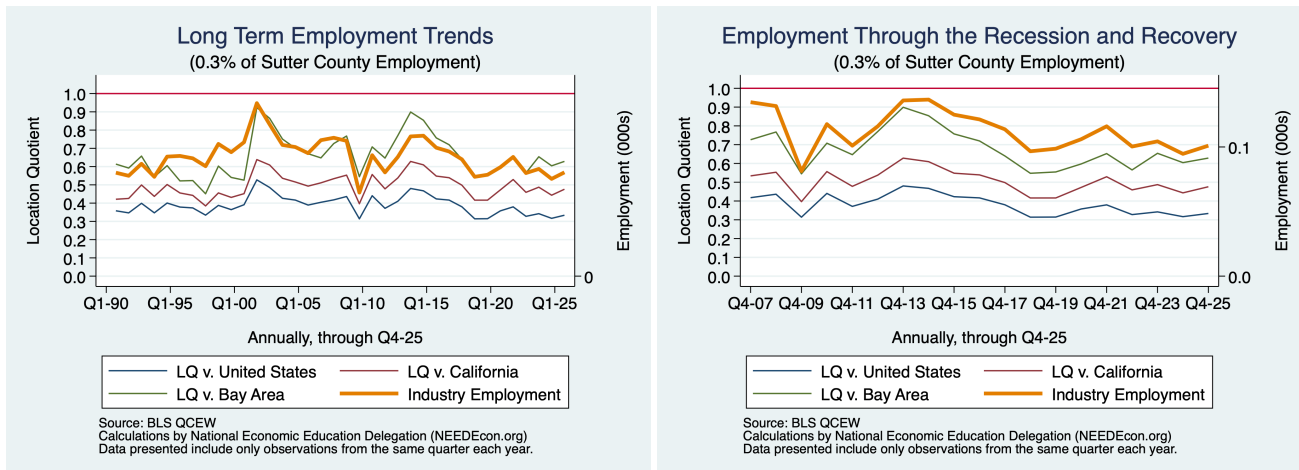


Figure 3 - 7: 326: Plastics and Rubber Products Manufacturing

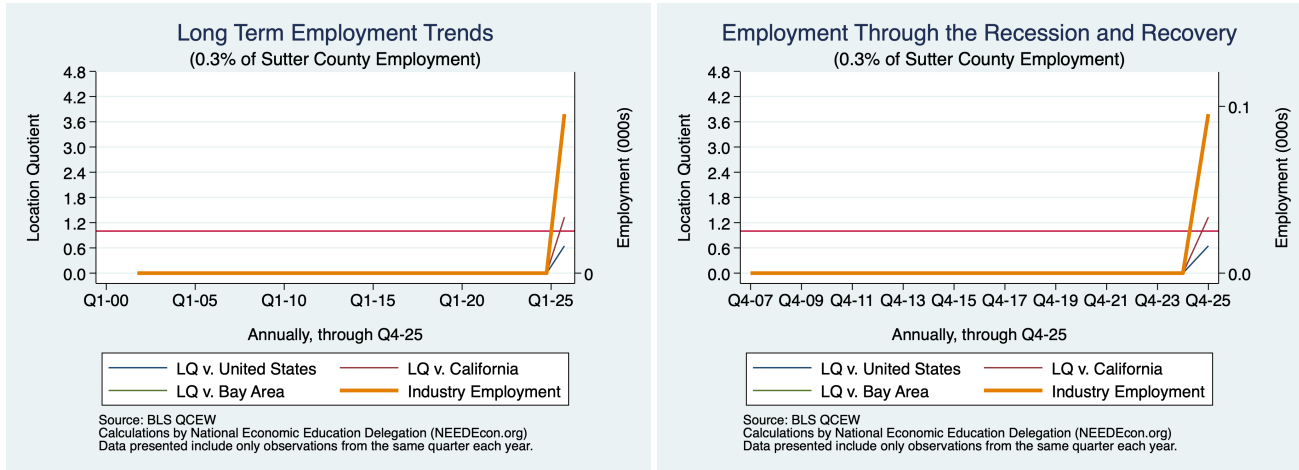


Figure 3 - 8: 3327: Machine Shops; Turned Product; and Screw, Nut, and Bolt Manufacturing

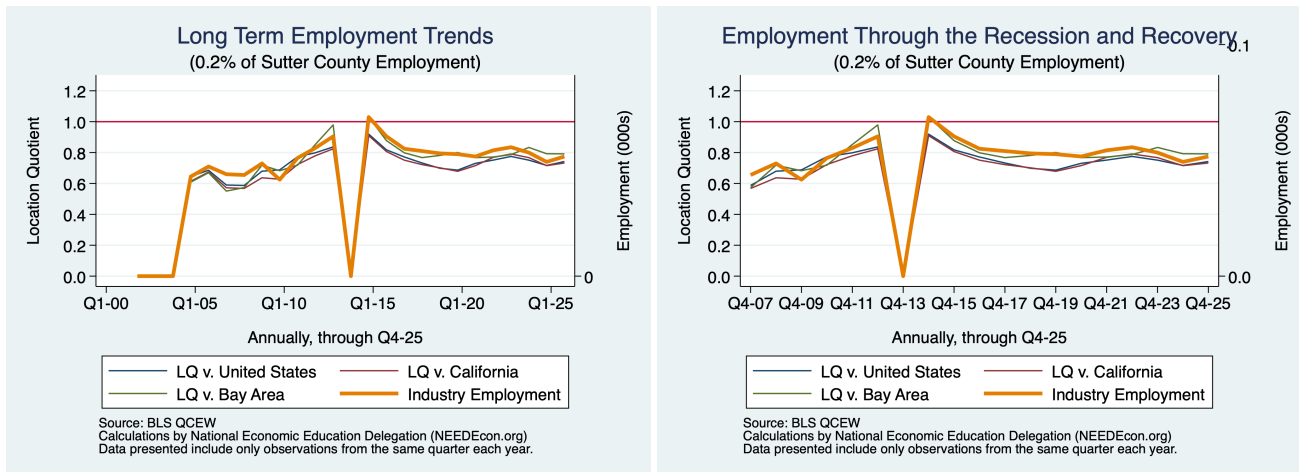


Figure 3 - 9: 336: Transportation Equipment Manufacturing

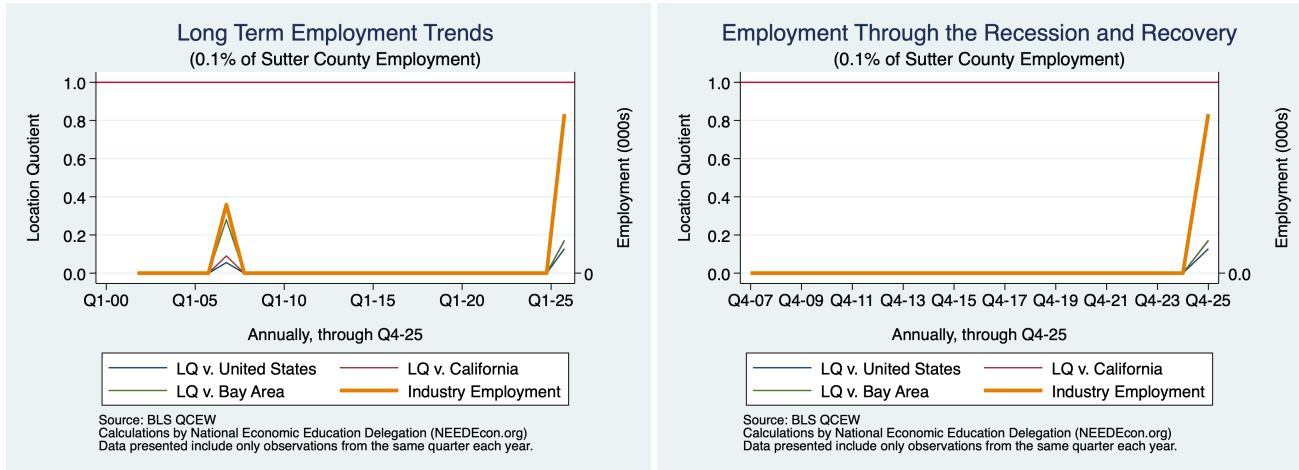


Figure 3 - 10: 339: Miscellaneous Manufacturing

