

Placer County Weekly Wages

Focus on Post-Recession Recovery

Q4 –2025 Update

Produced by

National Economic Education Delegation

June 27, 2026

Jon Haveman, Executive Director

415-336-5705 or Jon@NEEDEcon.org

Contents

1. Overview of Wage Changes Since the Onset of the COVID Pandemic	2
2. Weekly Wages Over Time	3
3. Graphical Display of Weekly Wage Evolution by Industry (Super Sector)	4
4. Descriptions and References	9



1. Overview of Wage Changes Since the Onset of the COVID Pandemic

Figure 1 - 1: Average Weekly Wages

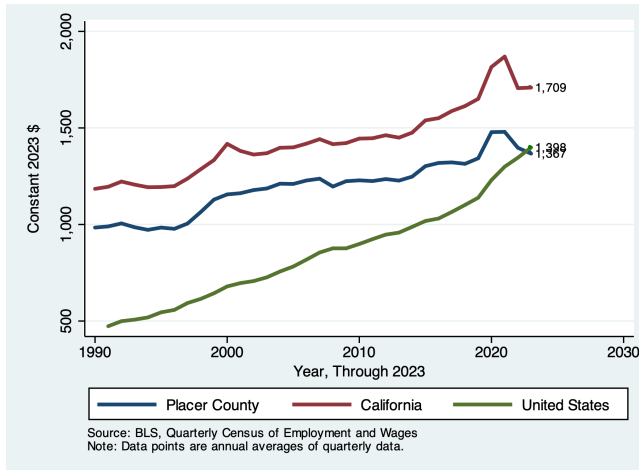


Figure 1 - 2: Wage Growth Through the Pandemic

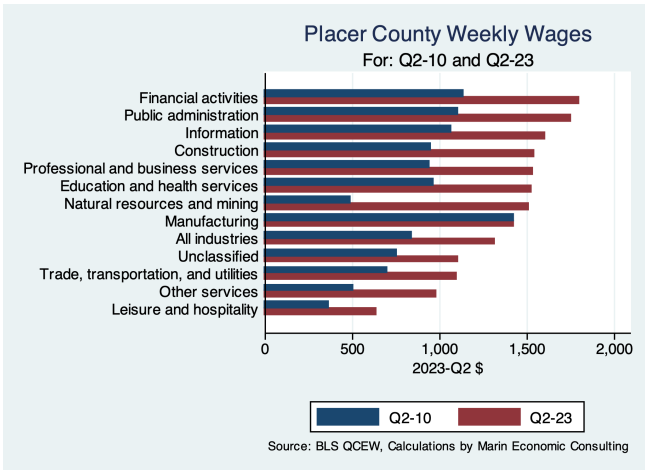


Table 1.1: Quarterly Summary for Q4 –2025

Sector	Levels in Q4 –2025				Change vs Q4 in 2019			
	Employment	Wages	Relative to:		Employment	Wages	Relative to:	
			Bay	U.S.			Bay	U.S.
Financial activities	12,758	1,797.1	0.8	0.9	3,007	661.98	-0.09	0.01
Public administration	6,642	1,752.0	0.9	1.2	152	644.28	0.05	0.07
Information	2,051	1,600.0	0.4	0.6	-421	532.05	-0.25	-0.25
Construction	18,979	1,543.3	1.0	1.1	10,516	591.32	0.03	0.04
Professional and business services	24,526	1,530.2	0.7	0.9	11,551	592.34	-0.07	-0.00
Education and health services	44,379	1,524.9	1.2	1.3	17,098	557.37	0.14	0.12
Natural resources and mining	587	1,508.0	1.7	1.2	211	1,018.00	0.80	0.64
Manufacturing	6,986	1,421.0	0.6	0.9	312	-6.00	-0.46	-0.41
Unclassified	207	1,105.0	0.8	0.8	-22	353.00	0.07	-0.06
Trade, transportation, and utilities	31,857	1,093.3	0.8	1.0	5,954	391.37	0.01	0.03
Other services	6,994	976.5	1.0	1.0	2,100	474.13	-0.02	0.12
Leisure and hospitality	28,938	635.3	0.9	1.1	9,543	272.70	0.04	0.06
Total	184,903	1,317.0	0.8	1.0	59,778	476.00	-0.05	0.02

Source: BLS, QCEW; Calculations by National Economic Education Delegation

2. Weekly Wages Over Time

Table2.1: Summary of Weekly Wages versus the Bay Area as A Whole

Sector	Q4 –2025		Relative Wages: Q4 of Each Year					
	Employment	Wages	1990	2001	2004	2007	2019	2025
Financial activities	12,758	1,797.1	0.64	0.61	0.61	0.72	0.67	0.49
Public administration	6,642	1,752.0	0.74	0.77	0.68	0.70	0.75	0.78
Information	2,051	1,600.0	0.88	0.77	0.55	0.50	0.46	0.25
Construction	18,979	1,543.3	0.74	0.74	0.74	0.83	0.85	0.80
Professional and business services	24,526	1,530.2	0.66	0.65	0.51	0.53	0.55	0.46
Education and health services	44,379	1,524.9	0.88	0.77	0.81	0.82	0.83	0.96
Natural resources and mining	587	1,508.0	0.73	0.72	0.70	0.66	0.75	1.37
Manufacturing	6,986	1,421.0	0.85	0.89	0.75	0.85	0.79	0.35
All industries	184,903	1,317.0	0.75	0.71	0.64	0.69	0.67	0.53
Unclassified	207	1,105.0			0.67	0.47	0.63	0.85
Trade, transportation, and utilities	31,857	1,093.3	0.77	0.79	0.75	0.75	0.74	0.67
Other services	6,994	976.5	0.84	0.86	0.89	0.87	0.86	0.82
Leisure and hospitality	28,938	635.3	0.72	0.74	0.73	0.70	0.77	0.80

Source: BLS, QCEW; Calculations by National Economic Education Delegation

Table2.2: Summary of Weekly Wages versus California as A Whole

Sector	Q4 –2025		Relative Wages: Q4 of Each Year					
	Employment	Wages	1990	2001	2004	2007	2019	2025
Financial activities	12,758	1,797.1	0.69	0.70	0.78	0.86	0.84	0.76
Public administration	6,642	1,752.0	0.80	0.81	0.76	0.82	0.86	0.91
Information	2,051	1,600.0	0.95	0.84	0.69	0.68	0.65	0.37
Construction	18,979	1,543.3	0.84	0.85	0.90	0.98	0.99	0.97
Professional and business services	24,526	1,530.2	0.74	0.81	0.71	0.73	0.77	0.69
Education and health services	44,379	1,524.9	0.89	0.82	0.89	0.93	0.94	1.15
Natural resources and mining	587	1,508.0	1.06	1.09	1.15	0.90	1.01	1.73
Manufacturing	6,986	1,421.0	1.05	1.20	1.14	1.28	1.22	0.61
All industries	184,903	1,317.0	0.84	0.85	0.85	0.89	0.87	0.81
Unclassified	207	1,105.0			1.03	0.82	0.63	0.83
Trade, transportation, and utilities	31,857	1,093.3	0.86	0.89	0.88	0.86	0.85	0.85
Other services	6,994	976.5	0.89	0.95	1.08	1.05	1.00	0.97
Leisure and hospitality	28,938	635.3	0.74	0.77	0.77	0.71	0.82	0.87

Source: BLS, QCEW; Calculations by National Economic Education Delegation

Table2.3: Summary of Weekly Wages versus the United States as A Whole

Sector	Q4 –2025		Relative Wages: Q4 of Each Year					
	Employment	Wages	1990	2001	2004	2007	2019	2025
Financial activities	12,758	1,797.1	0.75	0.75	0.87	0.98	0.96	0.91
Public administration	6,642	1,752.0	0.96	1.03	0.93	1.01	1.09	1.15
Information	2,051	1,600.0	1.04	0.98	0.84	0.91	0.86	0.58
Construction	18,979	1,543.3	0.96	0.96	1.00	1.07	1.10	1.09
Professional and business services	24,526	1,530.2	0.77	0.90	0.82	0.82	0.86	0.86
Education and health services	44,379	1,524.9	0.97	0.87	0.99	1.03	1.06	1.26
Natural resources and mining	587	1,508.0	0.73	0.71	0.79	0.62	0.64	1.20
Manufacturing	6,986	1,421.0	1.16	1.34	1.37	1.49	1.51	0.93
All industries	184,903	1,317.0	0.93	0.94	0.97	1.01	0.99	0.99
Unclassified	207	1,105.0			0.99	0.77	0.67	0.79
Trade, transportation, and utilities	31,857	1,093.3	0.99	1.00	1.00	0.97	0.95	0.97
Other services	6,994	976.5	0.95	0.94	1.06	1.00	0.93	1.02
Leisure and hospitality	28,938	635.3	0.89	0.89	0.91	0.88	0.99	1.06

Source: BLS, QCEW; Calculations by National Economic Education Delegation

3. Graphical Display of Weekly Wage Evolution by Industry (Super Sector)

Graphs are for the top 10 NAICS 2-digit industries and present only Q4 data for each year.

Figure 3 - 1: 1023: Financial activities

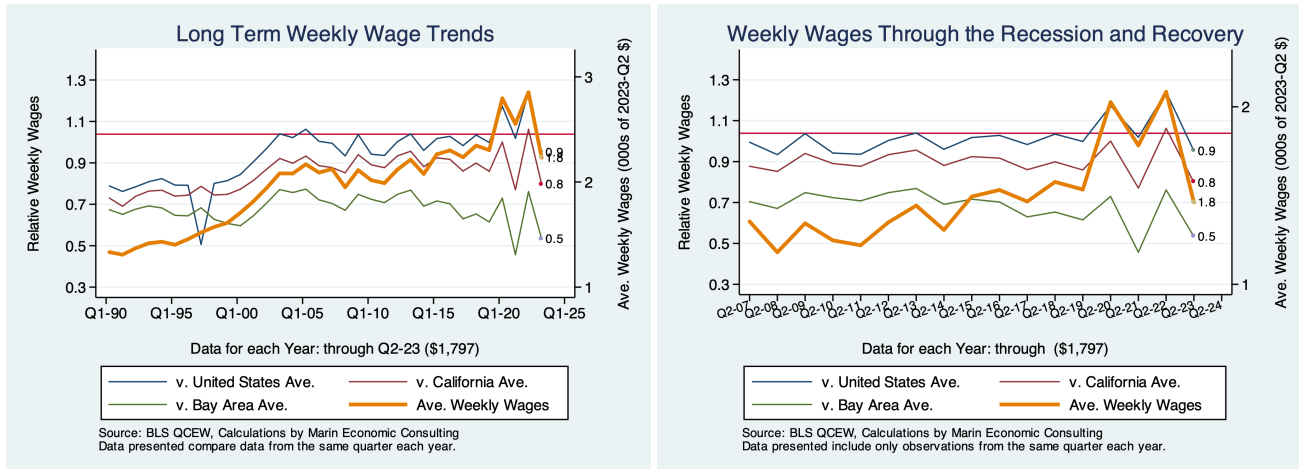


Figure 3 - 2: 1023: Financial activities

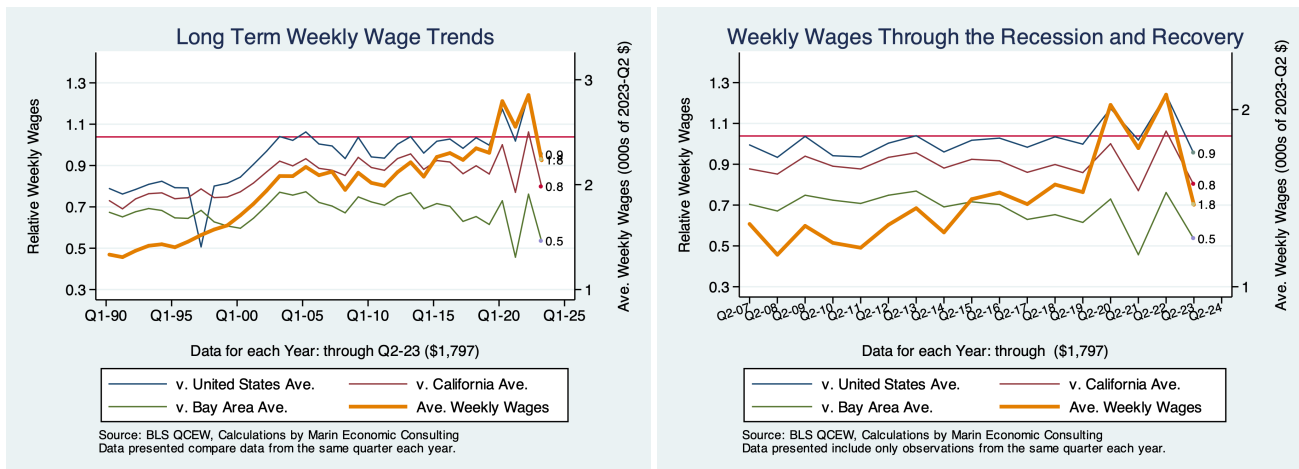


Figure 3 - 3: 1028: Public administration

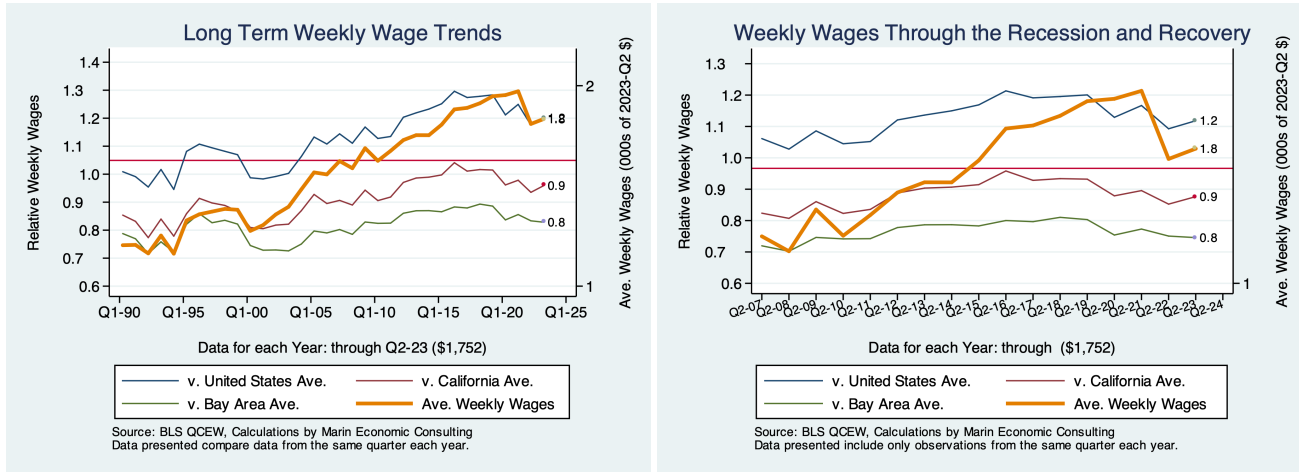


Figure 3 - 4: 1028: Public administration

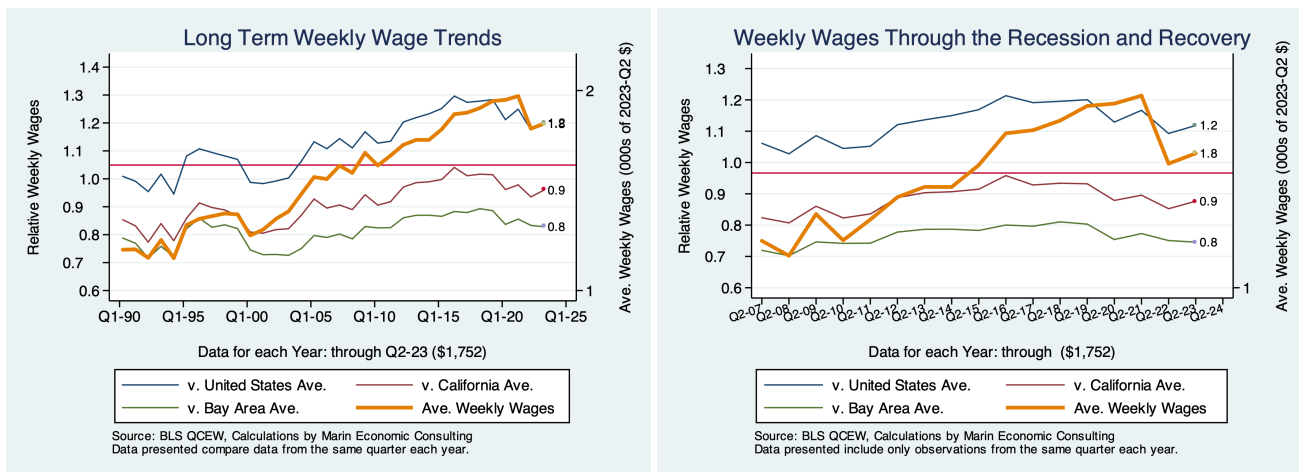


Figure 3 - 5: 1022: Information

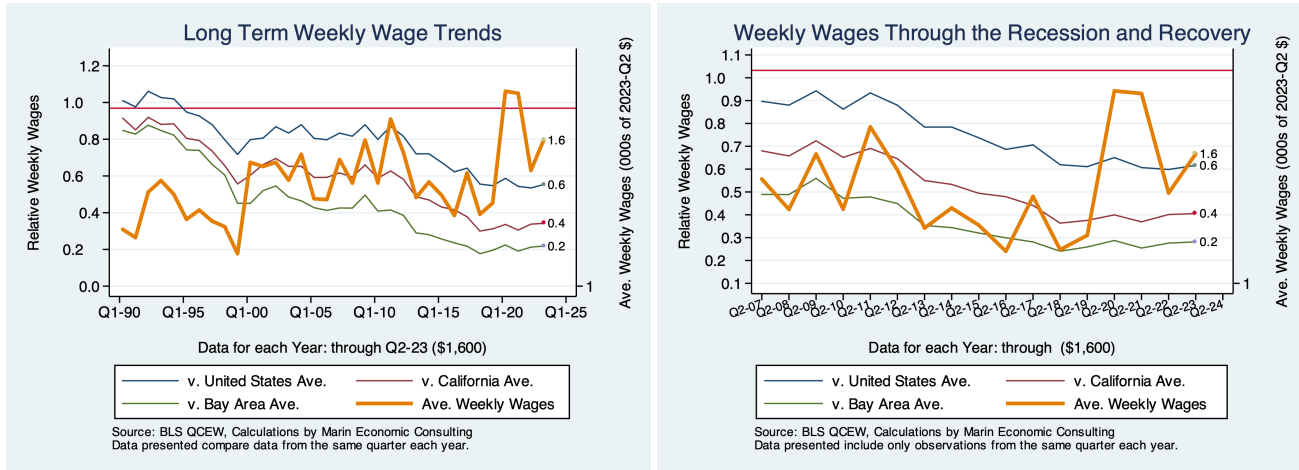


Figure 3 - 6: 1022: Information

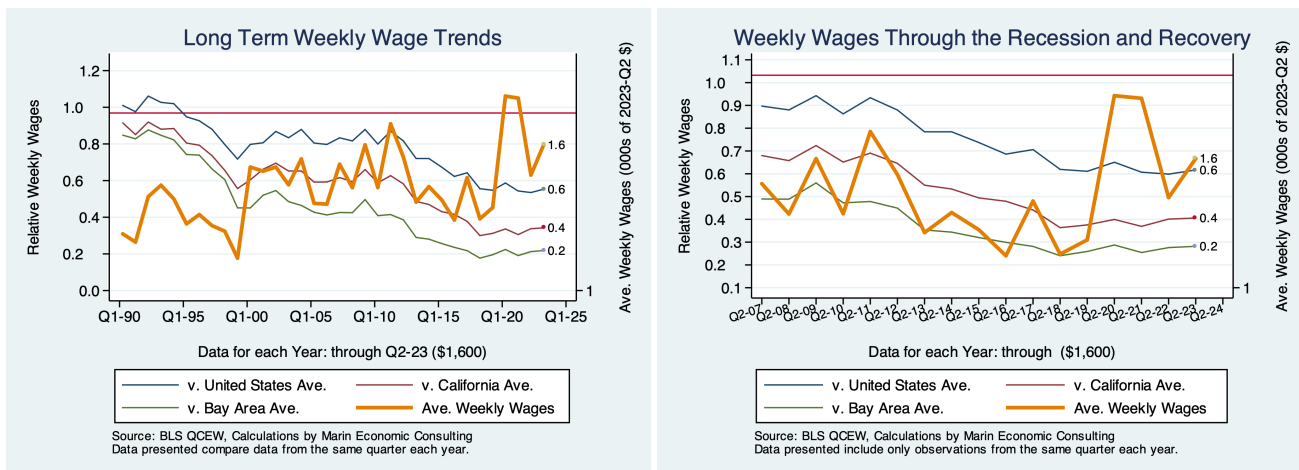


Figure 3 - 7: 1012: Construction

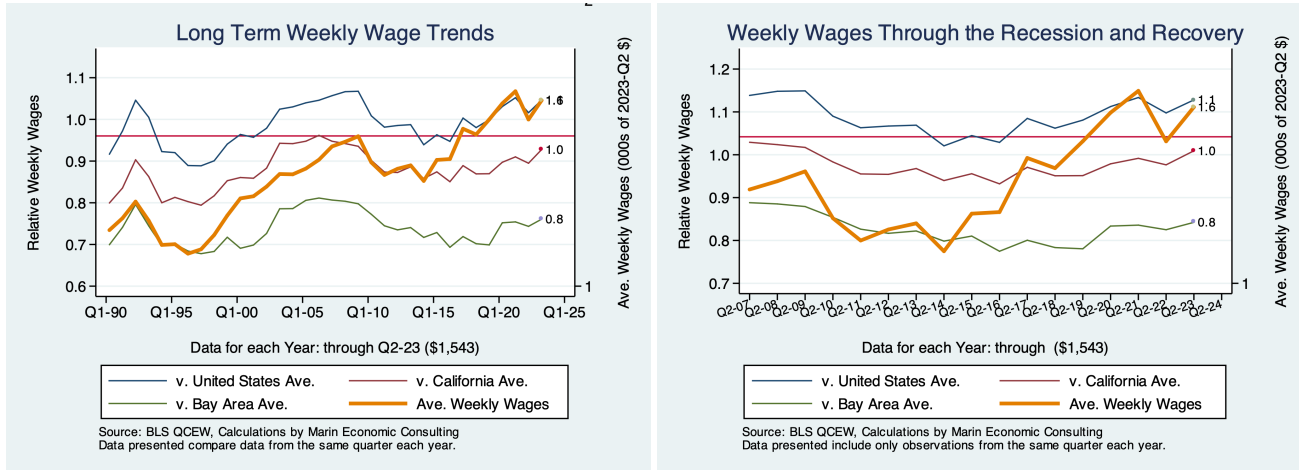


Figure 3 - 8: 1012: Construction

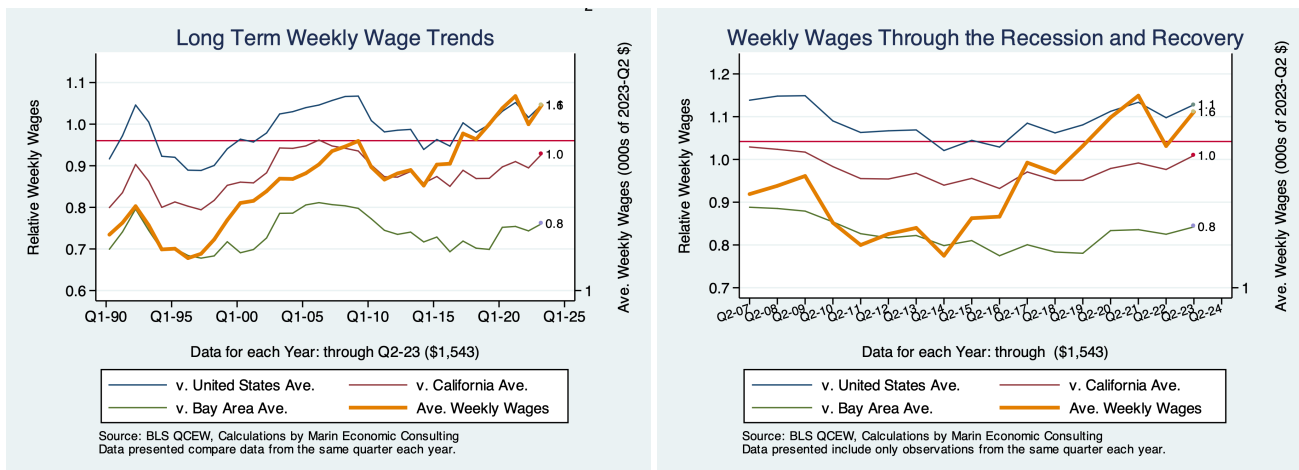


Figure 3 - 9: 1024: Professional and business services

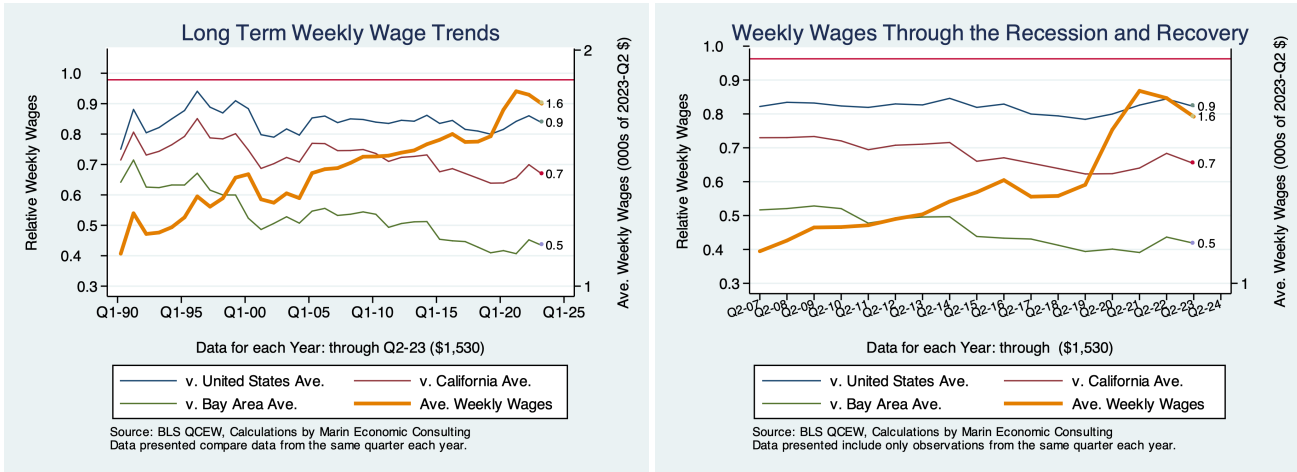
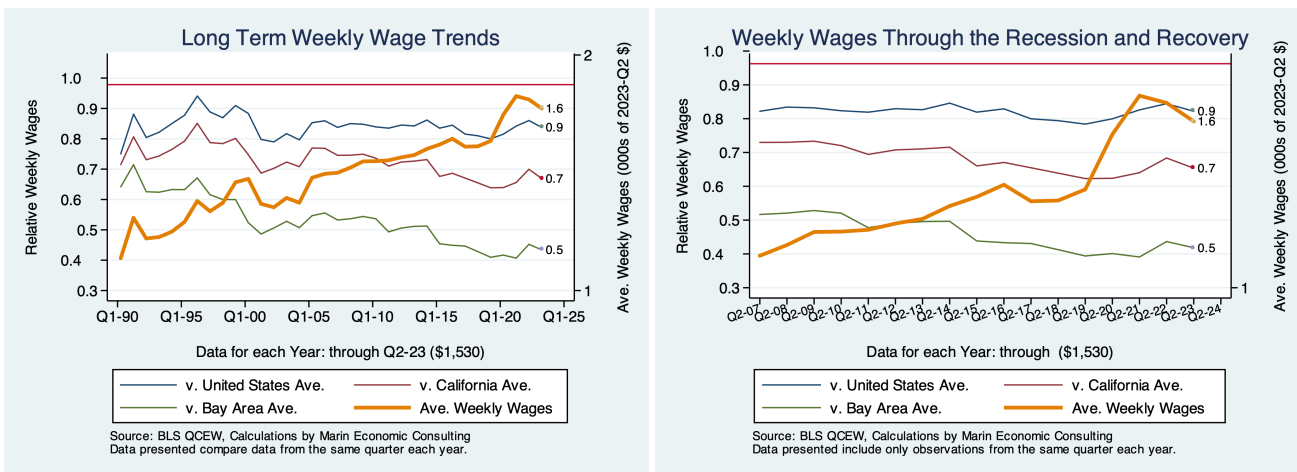


Figure 3 - 10: 1024: Professional and business services



4. Descriptions and References

The contents of this report illustrate the evolution of Placer County wage patterns over time. This report presents:

Wages: Average weekly wages for the industry in the region. They are inflation adjusted to current dollars using: Consumer Price Index for All Urban Consumers: All Items, from the FRED Database maintained by the St. Louis Federal Reserve Bank.

The data underlying this report are from the Bureau of Labor Statistics: Quarterly Census of Employment and Wages (QCEW). These data are available on a quarterly basis, generally with a 5 month lag from the end of the quarter to the release of the data.

QCEW: The Quarterly Census of Employment and Wages (QCEW) program publishes a quarterly count of employment and wages reported by employers covering 98 percent of U.S. jobs, available at the county, MSA, state and national levels by industry. <http://www.bls.gov/cew/home.htm>

Time Period: The data extend from Q1-1990 through Q4 -2025

Seasonality: There is a significant seasonal component to many industries. The QCEW data are not seasonally adjusted. Rather than seasonally adjusting the data, most comparisons in this report are between the same quarter in different years. The data presented are therefore the actual employment levels and wages (inflation adjusted) compared across years.

A particular focus of this report is on the post-Pandemic recovery. This is accomplished by comparing the most recent quarter of data to the same quarter in 2007, the last non-recessionary year for most of California and the United States.

Notes:

Notes: There are occasions where the data displayed seem to reflect implausible increases in either employment or wages. These changes are as reported in the QCEW data. For a closer look at these changes, please contact: Jon@NEEDEcon.org