

Placer County Industry Growth and Location Quotients

Q4 -2025

Produced by

National Economic Education Delegation

June 26, 2026

Jon Haveman, Executive Director

415-336-5705 or Jon@NEEDEcon.org

Contents

1. Nonfarm Employment	2
2. Location Quotients: Graphical History	4
3. Location Quotients: 2-digit NAICS	6
4. Location Quotients: 3-digit NAICS	7
5. Location Quotients: 4-digit NAICS	8



1. Nonfarm Employment

Figure 1 - 1: Regional Growth Relative to California and the United States

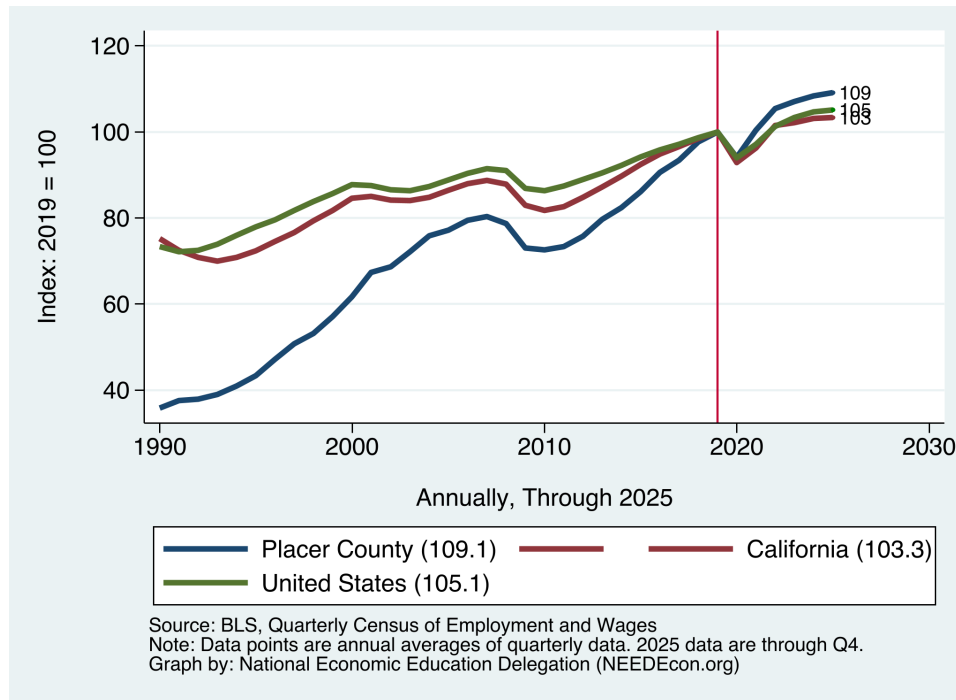


Table 1.1: Total Nonfarm Employment Growth (Q4 of each year.)

Region	Current Employment	Year over Year Change (#)	Annual Rate of Growth						
			Over last: Year	2 Years	3 Years	5 Years	Since: 2010	2000	1990
Placer County	189,499	1,561	0.8	1.0	1.3	2.9	3.4	2.8	5.8
California	18,413,900	47,570	0.3	0.6	0.5	2.3	1.8	0.9	1.1
United States	156,854,848	386,112	0.2	0.6	0.9	2.2	1.4	0.8	1.2

Source: BLS, QCEW; Calculations by National Economic Education Delegation

Figure 1 - 2: Industry Shares and Growth

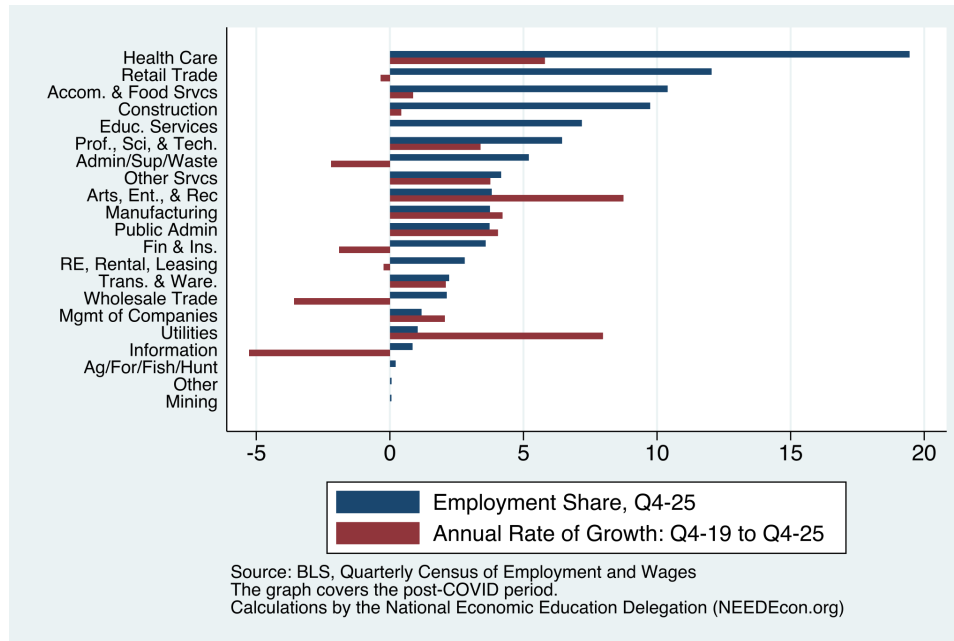


Table 1.2: Nonfarm Employment Growth by 2-Digit NAICS Category (Q4 of each year.)

Region	Current Employment	Year over Year Change (#)	Annual Rate of Growth						
			Over last: Year	2 Years	3 Years	5 Years	Since: 2010	2000	1990
Ag, For, Fish, & Hunting	389	389		1.4	-0.9	-0.7	0.2	-0.2	-0.7
Mining	96	96		-31.3	-14.3	-3.2	24.4	-0.4	0.5
Utilities	1,958	131	7.2	7.7	166.4	97.3	7.2	13.3	
Construction	18,446	-808	-4.2	-3.0	-1.4	0.7	8.0	2.5	5.4
Manufacturing	7,095	-20	-0.3	-0.5	0.5	6.1	0.6	-1.6	-0.3
Wholesale Trade	4,029	-216	-5.1	-3.3	-2.8	-2.5	0.5	1.6	5.7
Retail Trade	22,814	325	1.4	0.6	-0.3	-0.3	1.1	1.4	4.6
Trans. & Ware.	4,199	337	8.7	3.7	248.8	139.2	3.9	1.9	6.7
Information	1,605	-339	-17.4	-12.3	-6.0		-2.3	-1.6	0.3
Fin & Ins.	6,791	423	6.6	2.4	-0.5	-2.4	-0.4	2.7	5.4
RE, Rental, Leasing	5,305	-42	-0.8	-3.2	-5.0	0.6	6.7	4.6	6.2
Prof., Sci, & Tech.	12,197	380	3.2	4.0	4.2	5.7	5.4	8.7	16.5
Mgmt of Companies	2,244	-58	-2.5	8.0	5.7	2.9	6.6	-0.7	-2.3
Admin, Support, & Waste	9,854	775	8.5	-4.8	-5.7	-3.2	5.3	2.0	13.5
Educ. Services	13,618	281	2.1	5.8	6.2	8.8	3.1	1.9	3.7
Health Care & Soc. Asst.	36,868	2,041	5.9	6.5	8.1	7.3	7.6	12.6	16.2
Arts, Ent., & Rec	7,216	-2,316	-24.3	-10.0	-6.7	17.8	8.0	8.7	13.4
Accom. & Food Svcs	19,702	-97	-0.5	0.3	0.4	5.5	2.5	2.8	5.5
Other Svcs	7,890	627	8.6	5.4	5.9	5,070.3	4.3	2.8	5.8
Public Admin	7,070	55	0.8	1.7	2.7	4.7	1.4	1.6	3.2
Other	114	97	584.0	-2.5	52.4	2,260.0	-5.2	-3.9	-2.8

Source: BLS, QCEW; Calculations by National Economic Education Delegation

2. Location Quotients: Graphical History

Figure 2 - 1: Health Care & Soc. Asst.

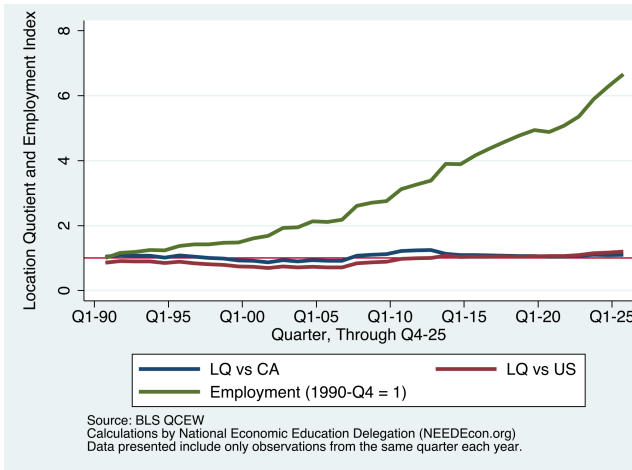


Figure 2 - 2: Retail Trade

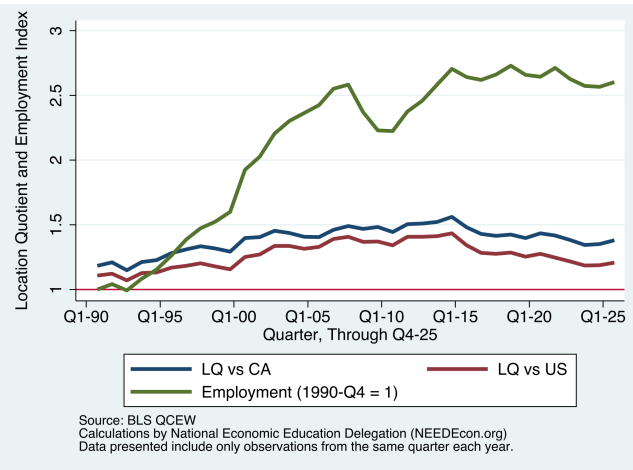


Figure 2 - 3: Accom. & Food Svcs

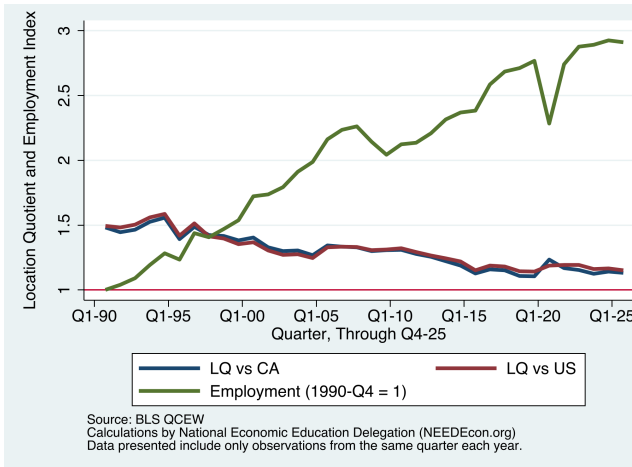


Figure 2 - 4: Construction

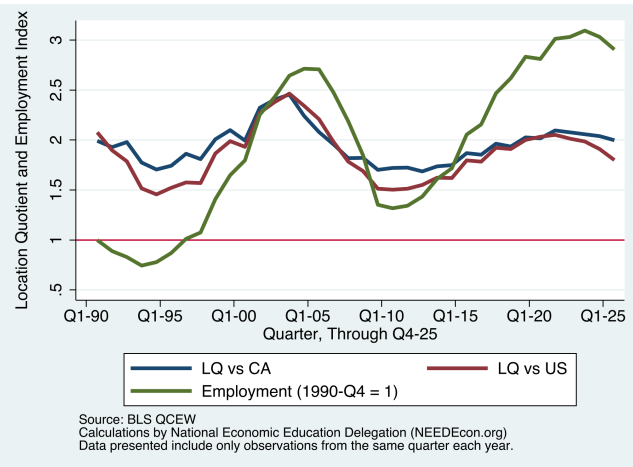


Figure 2 - 5: Educ. Services

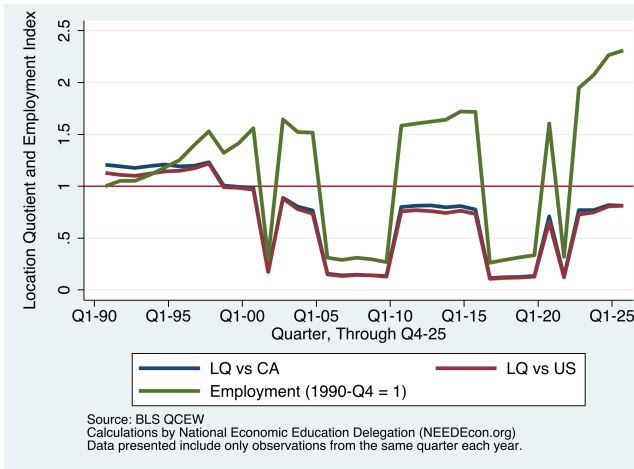


Figure 2 - 6: Prof., Sci., & Tech.

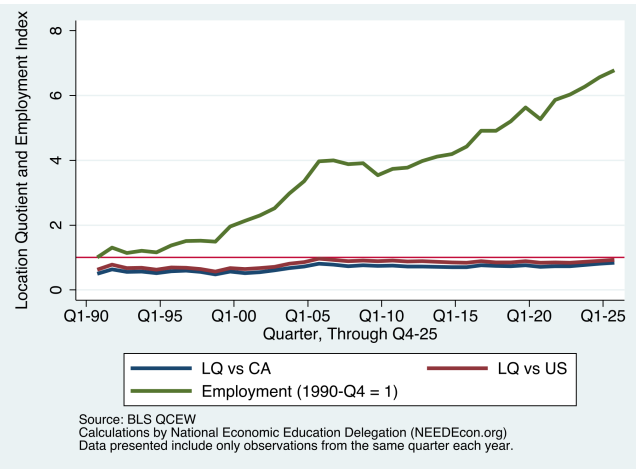


Figure 2 - 7: Admin, Support, & Waste

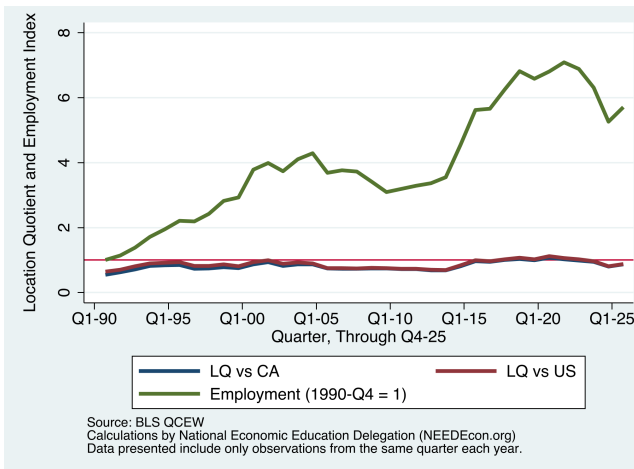
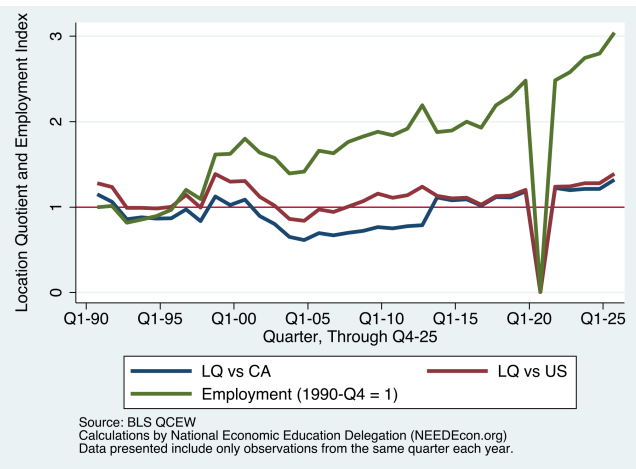


Figure 2 - 8: Other Srvcs



3. Location Quotients: 2-digit NAICS

**Table 3.1: Location Quotients for 2-Digit NAICS Industries
(Q4 of each year.)**

NAICS Industry	LQ vs California			LQ vs United States		
	Current	5 Years Ago	2000	Current	5 Years Ago	2000
Agriculture, Forestry, Fishing and Hunting	0.10	0.10	0.12	0.26	0.28	0.34
Mining, Quarrying, and Oil and Gas Extraction	0.58	0.68	0.10	0.14	0.20	0.03
Utilities	1.58	0.31	1.03	1.84	0.35	1.20
Construction	2.00	2.02	1.72	1.80	2.03	1.50
Manufacturing	0.57	0.43	0.61	0.47	0.38	0.58
Wholesale Trade	0.61	0.71	0.67	0.55	0.70	0.70
Retail Trade	1.38	1.43	1.44	1.21	1.28	1.34
Transportation and Warehousing	0.46	0.06	0.59	0.44	0.07	0.54
Information	0.29	0.00	0.64	0.45	0.00	0.89
Finance and Insurance	1.33	1.42	1.63	0.88	1.08	1.35
Real Estate and Rental and Leasing	1.68	1.81	1.23	1.79	2.00	1.39
Professional, Scientific, and Technical Services	0.84	0.71	0.75	0.93	0.84	0.91
Management of Companies and Enterprises	0.73	0.81	0.68	0.71	0.72	0.62
Administrative and Support and Waste Management and Remediation Services	0.87	1.07	0.72	0.88	1.12	0.73
Educational Services	0.81	0.71	0.80	0.81	0.65	0.76
Health Care and Social Assistance	1.10	1.04	1.21	1.20	1.06	0.98
Arts, Entertainment, and Recreation	1.70	1.66	1.26	2.05	1.71	1.55
Accommodation and Food Services	1.13	1.23	1.31	1.15	1.19	1.32
Other Services (except Public Administration)	1.32	0.01	0.75	1.39	0.01	1.11
Public Administration	0.76	0.67	0.83	0.75	0.66	0.82

Source: BLS, QCEW; Calculations by National Economic Education Delegation

4. Location Quotients: 3-digit NAICS

Table 4.1: Location Quotients for 3-Digit NAICS Industries
(Q4 of each year.)

NAICS Industry	LQ vs California			LQ vs United States		
	Current	5 Years Ago	2000	Current	5 Years Ago	2000
Utilities	1.58	0.31	1.03	1.84	0.35	1.20
Construction of Buildings	2.29	2.31	2.18	2.16	2.44	2.05
Heavy and Civil Engineering Construction	1.73	1.34	1.26	1.15	0.99	0.84
Specialty Trade Contractors	1.94	2.04	1.65	1.84	2.16	1.50
Food Manufacturing	0.38	0.32	0.06	0.30	0.26	0.05
Beverage and Tobacco Product Manufacturing	0.70	0.48	0.00	1.15	0.88	0.00
Wood Product Manufacturing	2.38	2.43	3.51	1.24	1.36	1.86
Fabricated Metal Product Manufacturing	0.64	0.44	0.40	0.45	0.33	0.32
Machinery Manufacturing	0.95	0.94	0.84	0.52	0.57	0.50
Computer and Electronic Product Manufacturing	0.49	0.38	1.53	0.93	0.88	3.39
Transportation Equipment Manufacturing	0.22	0.21	0.07	0.16	0.13	0.05
Miscellaneous Manufacturing	1.68	0.26	0.24	1.94	0.31	0.30
Merchant Wholesalers, Durable Goods	0.75	0.89	0.73	0.64	0.83	0.73
Merchant Wholesalers, Nondurable Goods	0.45	0.52	0.64	0.46	0.58	0.72
Motor Vehicle and Parts Dealers	2.02	2.14	1.86	1.58	1.69	1.58
Building Material and Garden Equipment and Supplies Dealers	1.46	1.59	1.44	1.13	1.31	1.23
Food and Beverage Stores	1.13	1.25	1.24	1.14	1.25	1.28
Truck Transportation	0.62	0.91	0.26	0.51	0.72	0.19
Support Activities for Transportation	0.39	0.32	0.51	0.46	0.41	0.64
Postal Service	0.75	0.73	0.81	0.61	0.64	0.76
Couriers and Messengers	1.04	0.88	0.85	1.20	1.01	0.82
Motion Picture and Sound Recording Industries	0.27	0.12	0.22	0.79	0.43	0.78
Credit Intermediation and Related Activities	1.24	1.48	1.65	0.81	1.13	1.39
Securities, Commodity Contracts, and Other Financial Investments and Related Activities	0.86	1.09	0.95	0.68	0.92	0.83
Insurance Carriers and Related Activities	1.72	1.53	1.98	1.06	1.09	1.53
Real Estate	1.79	1.84	1.17	1.98	2.11	1.36
Rental and Leasing Services	1.26	1.79	0.00	1.18	1.64	0.00
Professional, Scientific, and Technical Services	0.84	0.71	0.75	0.93	0.84	0.91
Management of Companies and Enterprises	0.73	0.81	0.68	0.71	0.72	0.62
Administrative and Support Services	0.86	1.07	0.71	0.88	1.12	0.72
Waste Management and Remediation Services	0.94	1.21	0.97	0.92	1.16	0.90
Educational Services	0.81	0.71	0.80	0.81	0.65	0.76
Ambulatory Health Care Services	1.35	1.41	1.50	1.39	1.37	1.41
Social Assistance	0.79	0.71	1.15	1.47	1.21	0.85
Amusement, Gambling, and Recreation Industries	2.33	2.35	1.66	2.73	2.18	2.07
Accommodation	0.85	1.07	1.47	0.90	1.04	1.50
Food Services and Drinking Places	1.18	1.26	1.28	1.19	1.21	1.29
Repair and Maintenance	2.11	1.71	1.25	1.92	1.64	1.32
Personal and Laundry Services	1.24	1.20	1.06	1.34	1.07	1.03
Religious, Grantmaking, Civic, Professional, and Similar Organizations	0.82	0.92	0.73	0.90	0.90	0.77
Executive, Legislative, and Other General Government Support	1.58	1.73	2.21	1.04	1.08	1.37
Justice, Public Order, and Safety Activities	0.68	0.55	0.56	0.83	0.69	0.76
Administration of Environmental Quality Programs	0.77	0.82	0.13	1.28	1.24	0.19

Source: BLS, QCEW; Calculations by National Economic Education Delegation

Note: Top 50 industries, by employment share.

5. Location Quotients: 4-digit NAICS

**Table 5.1: Location Quotients for 4-Digit NAICS Industries
(Q4 of each year.)**

NAICS Industry	LQ vs California			LQ vs United States		
	Current	5 Years Ago	2000	Current	5 Years Ago	2000
Residential Building Construction	2.30	2.62	2.50	2.59	3.25	2.98
Nonresidential Building Construction	2.29	1.84	1.70	1.73	1.58	1.21
Foundation, Structure, and Building Exterior Contractors	2.80	3.18	2.56	2.99	3.78	2.42
Building Equipment Contractors	1.68	1.82	1.56	1.42	1.70	1.23
Building Finishing Contractors	1.77	1.58	1.12	2.44	2.33	1.42
Other Specialty Trade Contractors	1.72	1.59	1.55	1.26	1.29	1.28
Automobile Dealers	2.31	2.49	2.25	1.87	2.01	1.93
Building Material and Supplies Dealers	1.31	1.41	1.30	1.06	1.20	1.13
Grocery Stores	1.18	1.26	1.29	1.20	1.27	1.32
Couriers and Express Delivery Services	0.85	0.90	0.00	0.98	1.00	0.00
Depository Credit Intermediation	0.93	0.95	1.56	0.53	0.63	1.29
Insurance Carriers	1.81	1.24	1.67	0.94	0.73	1.12
Agencies, Brokerages, and Other Insurance Related Activities	1.66	1.73	2.30	1.16	1.46	2.09
Lessors of Real Estate	1.74	2.08	1.05	1.49	1.85	0.94
Offices of Real Estate Agents and Brokers	2.07	1.43	0.95	2.78	1.99	1.24
Activities Related to Real Estate	1.69	1.88	1.33	2.03	2.40	1.89
Legal Services	1.27	0.95	0.63	1.40	1.01	0.65
Accounting, Tax Preparation, Bookkeeping, and Payroll Services	1.24	0.90	0.88	1.34	0.97	1.01
Architectural, Engineering, and Related Services	1.02	1.05	0.87	0.98	1.09	0.94
Computer Systems Design and Related Services	0.66	0.47	0.56	0.76	0.60	0.67
Management, Scientific, and Technical Consulting Services	0.83	0.81	1.07	0.86	0.93	1.55
Other Professional, Scientific, and Technical Services	1.80	1.91	1.80	1.42	1.59	1.67
Management of Companies and Enterprises	0.73	0.81	0.68	0.71	0.72	0.62
Employment Services	0.55	0.55	0.70	0.62	0.63	0.75
Investigation and Security Services	0.73	0.65	0.25	1.01	0.88	0.33
Services to Buildings and Dwellings	1.45	1.23	1.13	1.39	1.23	1.13
Elementary and Secondary Schools	1.02	0.06	0.07	0.98	0.06	0.06
Junior Colleges	0.99	0.00	0.00	1.47	0.00	0.00
Other Schools and Instruction	1.31	1.23	1.00	2.01	1.65	1.42
Offices of Physicians	1.01	0.94	0.89	0.79	0.75	0.86
Offices of Dentists	1.72	1.55	1.56	1.97	1.78	1.85
Offices of Other Health Practitioners	0.76	1.09	1.27	0.77	1.01	1.05
Outpatient Care Centers	2.24	2.46	3.85	4.76	4.66	5.11
Home Health Care Services	0.88	0.86	0.89	0.57	0.50	0.45
Nursing Care Facilities	1.33	0.96	1.25	1.06	0.71	0.77
Community Care Facilities for the Elderly	1.79	1.34	1.11	1.73	1.21	0.90
Individual and Family Services	0.74	0.58	0.85	1.68	1.24	0.61
Gambling Industries	5.58	0.00	0.00	8.55	0.00	0.00
Other Amusement and Recreation Industries	2.16	3.94	2.99	2.19	2.71	2.74
Traveler Accommodation	0.87	1.09	1.49	0.92	1.06	1.54
Automotive Repair and Maintenance	2.12	1.36	1.01	2.15	1.37	1.09
Personal Care Services	1.77	1.90	1.88	2.03	1.59	1.65
Executive, Legislative, and Other General Government Support	1.58	1.73	2.21	1.04	1.08	1.37
Justice, Public Order, and Safety Activities	0.68	0.55	0.56	0.83	0.69	0.76

Source: BLS, QCEW; Calculations by National Economic Education Delegation

Note: Top 50 industries, by employment share.