

Placer County Migration Patterns

American Community Survey
Summary Files

Produced by

National Economic Education Delegation

June 28, 2026

Jon Haveman, Executive Director

415-336-5705 or Jon@NEEDEcon.org

Contents

1. Overall Migration Flows	2
2. Demographics of Overall Migration Flows	4



1. Overall Migration Flows

Figure 1 - 1: Overall Movements of Residents

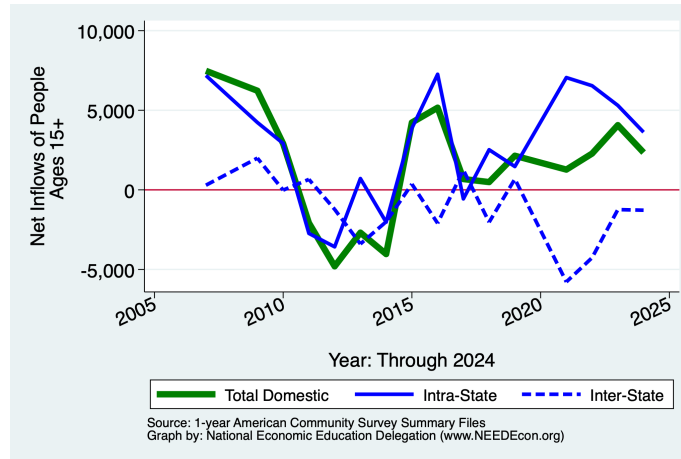


Table 1.1: Migration by Income

Category	Population	Net Inflows				
		All Migration	W/in County	Between Counties	Across States	From Abroad
No income	47,704	1,537	0	1,103	-574	1,008
With income	311,213	2,637	0	2,518	-704	823
\$1 to \$9,999 or loss	33,125	-1,614	0	-779	-863	28
\$10,000 to \$14,999	19,501	-958	0	-118	-955	115
\$15,000 to \$24,999	28,637	878	0	717	-73	234
\$25,000 to \$34,999	24,578	822	0	769	-15	68
\$35,000 to \$49,999	34,942	59	0	-105	2	162
\$50,000 to \$64,999	35,401	1,744	0	1,333	411	0
\$65,000 to \$74,999	16,022	401	0	134	267	0
\$75,000 or more	119,007	1,305	0	567	522	216
All:	358,917	4,174	0	3,621	-1,278	1,831

Source: 2024 1-year American Community Survey, Summary File

Figure 1 - 2: Overall Movements of Low-Income Residents

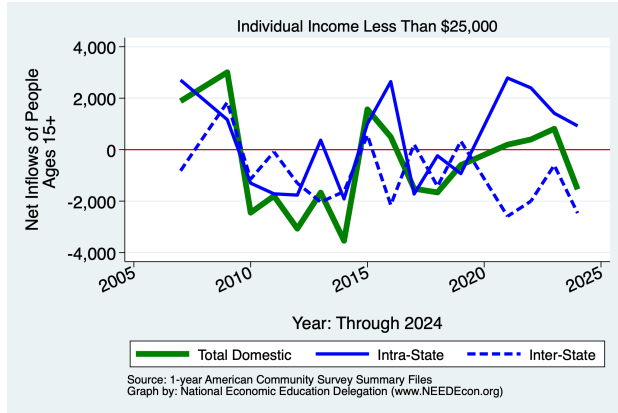


Figure 1 - 3: Overall Movements of Middle-Income Residents

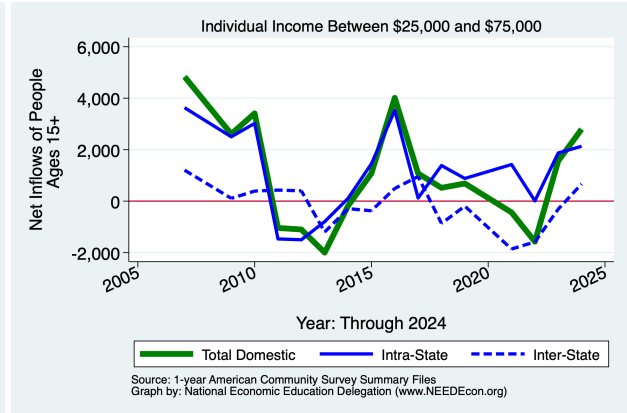
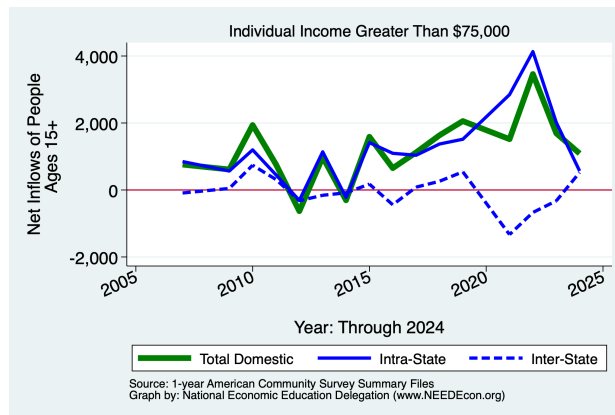


Figure 1 - 4: Overall Movements of High-Income Residents



2. Demographics of Migration Flows

Table 2.1: Migration by Marital Status

Category	Population	Net Inflows				
		All Migration	Same State		Across States	From Abroad
			W/in County	Between Counties		
Never married	92,147	-2,391	0	-1,495	-1,976	1,080
Now married, except separated	204,079	4,829	0	4,248	-105	686
Divorced	36,451	1,233	0	902	316	15
Separated	4,082	-21	0	-324	303	0
Widowed	22,158	524	0	290	184	50
Total:	358,917	4,174	0	3,621	-1,278	1,831

Source: 2024 1-year American Community Survey, Summary File

Table 2.2: Migration by Tenure

Category	Population	Net Inflows				
		All Migration	Same State		Across States	From Abroad
			W/in County	Between Counties		
Householder lived in owner-occupied housing units	331,150	7,148	0	5,097	763	1,288
Householder lived in renter-occupied housing units	92,703	1,095	0	-902	1,004	993
Total:	423,853	8,243	0	4,195	1,767	2,281

Source: 2024 1-year American Community Survey, Summary File

Figure 2 - 1: Domestic Movements of Residents by Tenure

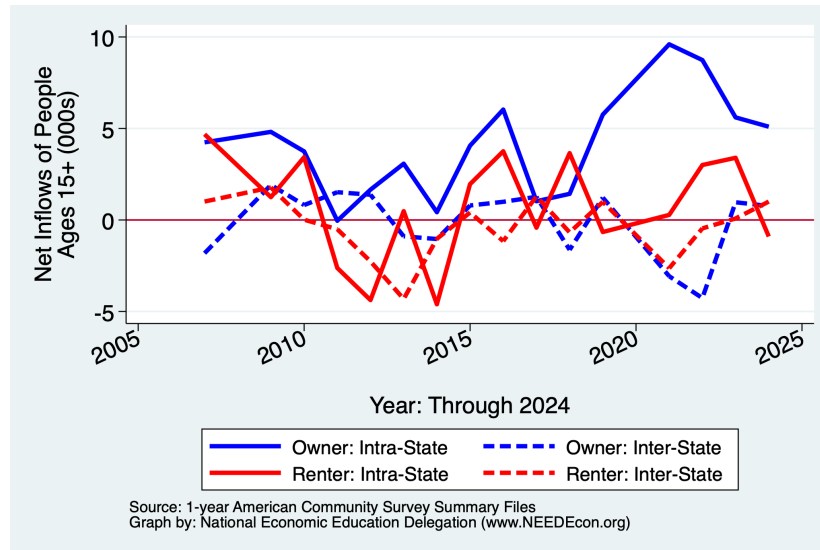


Table 2.3: Migration by Age

Category	Population	Net Inflows				
		All Migration	Same State		Across States	From Abroad
			W/in County	Between Counties		
1 to 4 years	15,899	982	0	95	887	0
5 to 17 years	72,086	1,278	0	144	244	890
18 and 19 years	9,150	-1,871	0	-430	-1,453	12
20 to 24 years	22,074	-2,450	0	-1,812	-779	141
25 to 29 years	21,828	1,169	0	412	302	455
30 to 34 years	24,884	2,458	0	1,255	996	207
35 to 39 years	27,912	1,747	0	1,019	426	302
40 to 44 years	33,817	530	0	118	335	77
45 to 49 years	28,191	84	0	253	-272	103
50 to 54 years	27,594	270	0	51	219	0
55 to 59 years	25,603	472	0	551	-151	72
60 to 64 years	28,626	92	0	363	-271	0
65 to 69 years	25,828	314	0	144	81	89
70 to 74 years	23,459	295	0	478	-233	50
75 years and over	42,371	1,316	0	1,280	36	0
Total Population:	429,322	6,686	0	3,921	367	2,398

Source: 2024 1-year American Community Survey, Summary File

Table 2.4: Migration by Educational Attainment

Category	Population	Net Inflows				
		All Migration	Same State		Across States	From Abroad
			W/in County	Between Counties		
Less than high school graduate	16,183	545	0	348	197	0
High school graduate (includes equiv)	60,309	1,966	0	1,244	239	483
Some college or assoc. degree	102,350	2,410	0	1,618	627	165
Bachelor's degree	88,400	2,682	0	1,888	399	395
Graduate or professional degree	42,871	1,144	0	826	6	312
Total:	310,113	8,747	0	5,924	1,468	1,355

Source: 2024 1-year American Community Survey, Summary File

Table 2.5: Median Income of Migration Flows

Flow	In-Migration	Out-Migration
Same House 1 Year Ago	55,855	55,855
Moved Within Same County	61,251	61,251
Moved to Different County, Same State	42,446	40,339
Moved Between States	51,899	17,102
Moved from Abroad	29,097	
Total Population:	55,173	54,371

Source: 2024 1-year American Community Survey, Summary File

Table 2.6: Median Age of Migration Flows

Flow	In-Migration	Out-Migration
Same House 1 Year Ago	44.5	44.5
Moved Within Same County	31.0	31.0
Moved to Different County, Same State	36.4	26.6
Moved Between States	31.6	24.2
Moved from Abroad	27.3	
Total Population:	43.1	43.1

Source: 2024 1-year American Community Survey, Summary File