

El Dorado County Industry Growth and Location Quotients Q4 -2025

Produced by

National Economic Education Delegation

June 26, 2026

Jon Haveman, Executive Director

415-336-5705 or Jon@NEEDEcon.org

Contents

1. Nonfarm Employment	2
2. Location Quotients: Graphical History	4
3. Location Quotients: 2-digit NAICS	6
4. Location Quotients: 3-digit NAICS	7
5. Location Quotients: 4-digit NAICS	8



1. Nonfarm Employment

Figure 1 - 1: Regional Growth Relative to California and the United States

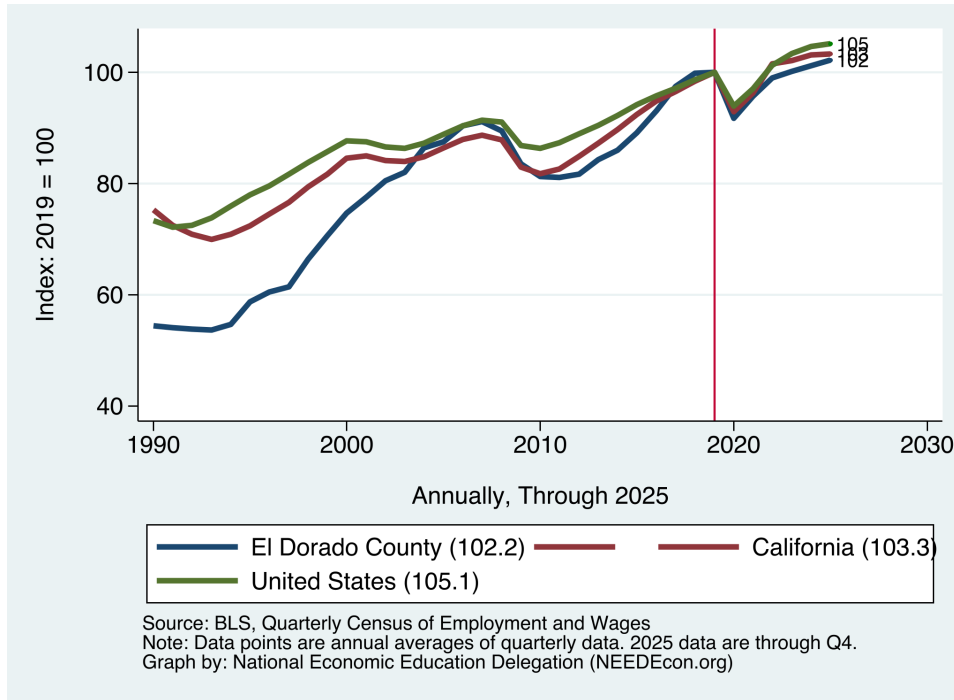


Table 1.1: Total Nonfarm Employment Growth (Q4 of each year.)

Region	Current Employment	Year over Year Change (#)	Annual Rate of Growth						
			Over last:				Since:		
			Year	2 Years	3 Years	5 Years	2010	2000	1990
El Dorado County	59,732	341	0.6	0.9	1.1	1.8	1.8	1.4	2.4
California	18,413,900	47,570	0.3	0.6	0.5	2.3	1.8	0.9	1.1
United States	156,854,848	386,112	0.2	0.6	0.9	2.2	1.4	0.8	1.2

Source: BLS, QCEW; Calculations by National Economic Education Delegation

Figure 1 - 2: Industry Shares and Growth

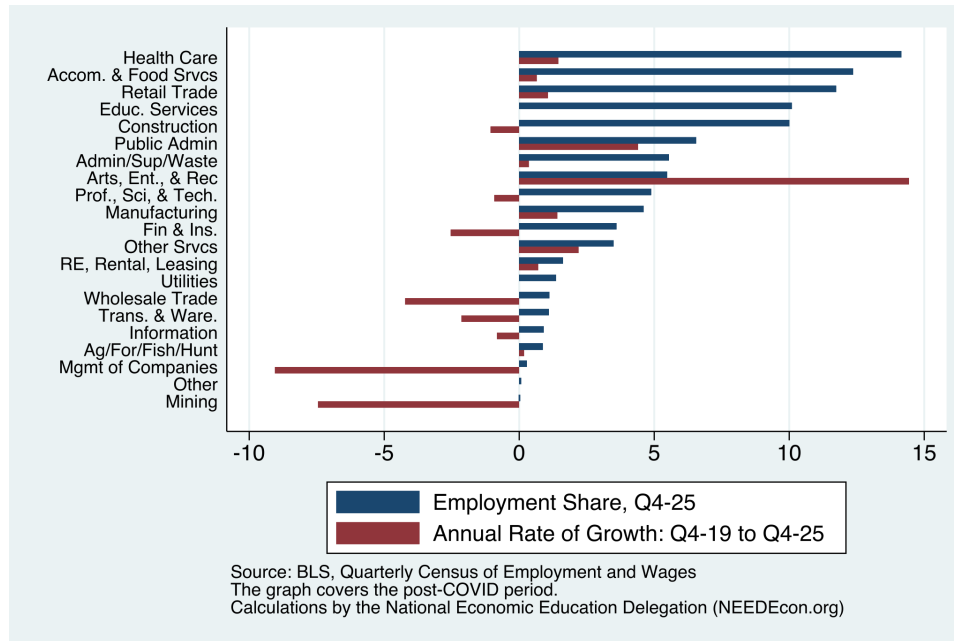


Table 1.2: Nonfarm Employment Growth by 2-Digit NAICS Category (Q4 of each year.)

Region	Current Employment	Year over Year Change (#)	Over last: Year	Annual Rate of Growth					
				2 Years	3 Years	5 Years	Since: 2010	2000	1990
Ag, For, Fish, & Hunting	527	-33	-6.0	-3.6		-1.4	0.4		
Mining	19	-4	-17.4	-8.7		-7.7	-4.1	-3.9	-2.8
Utilities	818	33	4.2	2.6	8.0	53.3	4.7	19.5	5.4
Construction	5,977	-390	-6.1	-4.0	-2.5	-0.0	6.2	1.7	2.6
Manufacturing	2,756	96	3.6	-0.6	-0.4	2.0	4.6	0.7	2.0
Wholesale Trade	672	-43	-6.0	-16.7	-10.1	-3.0	-0.6	-0.7	0.6
Retail Trade	7,011	188	2.8	1.8	1.3	0.3	1.8	0.7	0.9
Trans. & Ware.	655	-59	-8.2	-10.1	-7.9	-3.6	0.9	-0.5	0.4
Information	545	37	7.2	-1.5	-4.2		0.4	-0.2	0.5
Fin & Ins.	2,157	-57	-2.6	-1.8	-4.4	-3.1	-1.4	5.5	2.7
RE, Rental, Leasing	971	-70	-6.7	-3.0	1.2	-0.7	2.9	0.2	1.5
Prof., Sci., & Tech.	2,925	169	6.1	3.3	3.1	4.4	0.2	-0.8	9.4
Mgmt of Companies	172	-75	-30.3	-20.8	-14.9	-9.6	5.1	-1.2	-2.7
Admin, Support, & Waste	3,315	169	5.4	5.3	2.9	-0.8	1.3	4.4	5.3
Educ. Services	6,035	63	1.1	2.7	3.3	283.3	0.9	90.1	243.5
Health Care & Soc. Asst.	8,456	377	4.7	4.8	5.0	2.8	3.3	4.1	6.3
Arts, Ent., & Rec	3,276	-40	-1.2	3.6	1.7	29.0	7.4	3.0	3.9
Accom. & Food Svcs	7,388	44	0.6	0.2	0.5	3.5	2.6	1.8	2.1
Other Svcs	2,091	-60	-2.8	4.1	4.5	833.5	1.3	2.9	3.0
Public Admin	3,918	-46	-1.2	1.9	2.8	5.4	1.0	1.2	0.9
Other	46	42	1,041.7	7.6	537.5	74.5	-5.6	-4.0	-2.8

Source: BLS, QCEW; Calculations by National Economic Education Delegation

2. Location Quotients: Graphical History

Figure 2 - 1: Health Care & Soc. Asst.

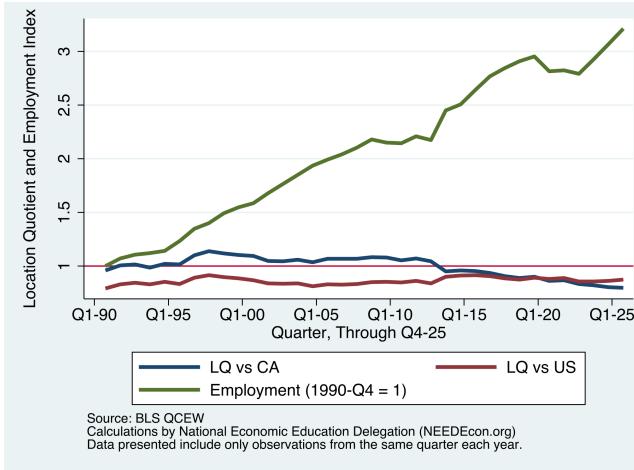


Figure 2 - 2: Accom. & Food Svcs

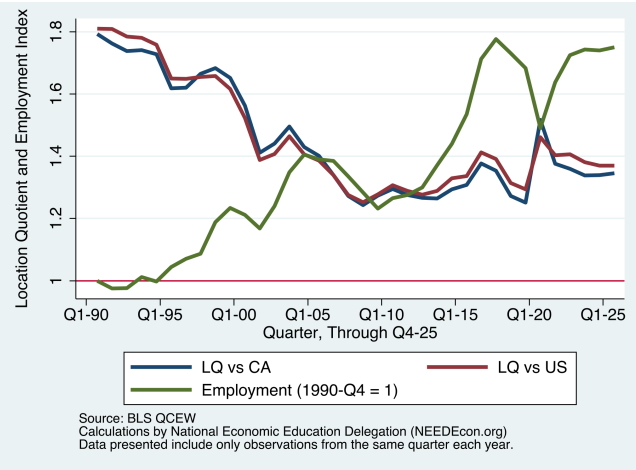


Figure 2 - 3: Retail Trade

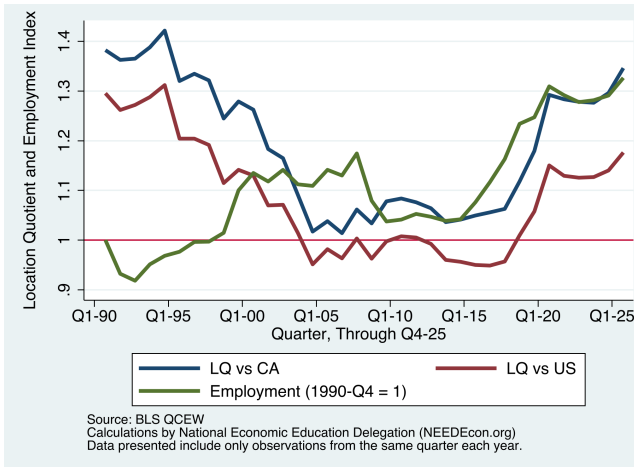


Figure 2 - 4: Educ. Services

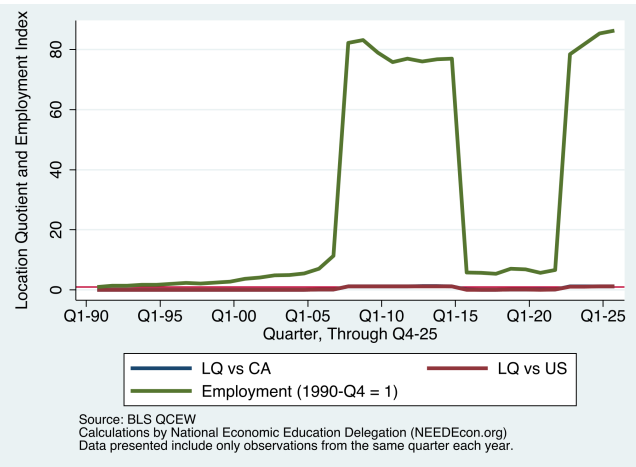


Figure 2 - 5: Construction

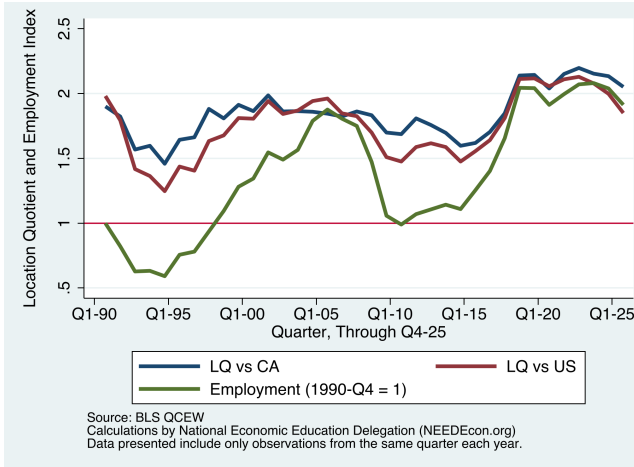


Figure 2 - 6: Public Admin

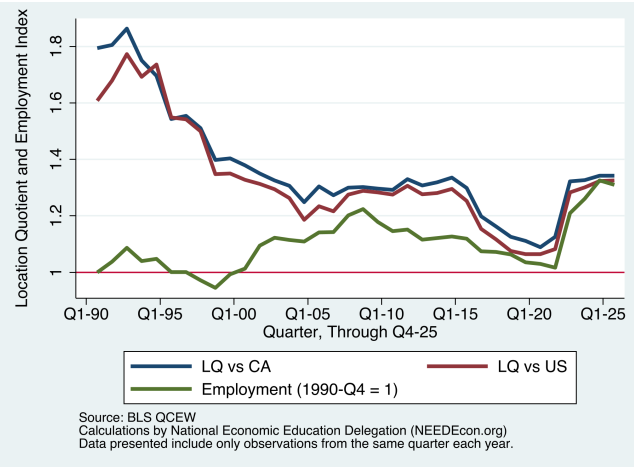


Figure 2 - 7: Admin, Support, & Waste

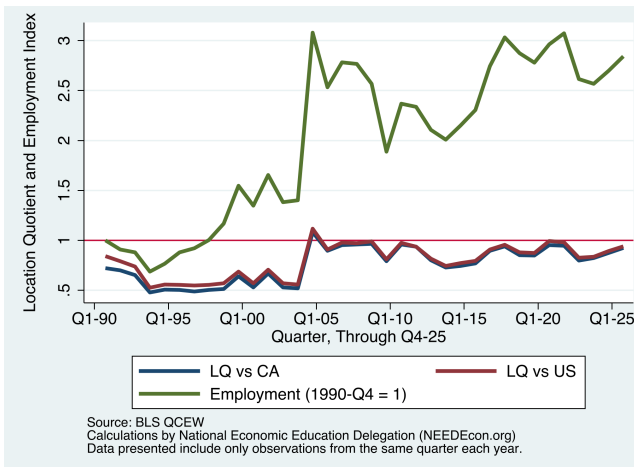
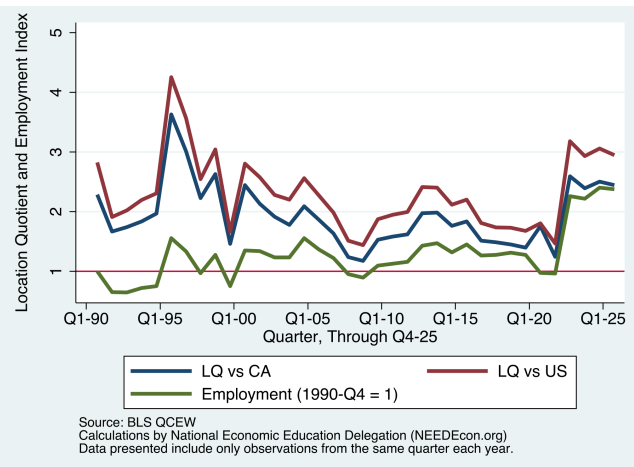


Figure 2 - 8: Arts, Ent., & Rec



3. Location Quotients: 2-digit NAICS

**Table 3.1: Location Quotients for 2-Digit NAICS Industries
(Q4 of each year.)**

NAICS Industry	LQ vs California			LQ vs United States		
	Current	5 Years Ago	2000	Current	5 Years Ago	2000
Agriculture, Forestry, Fishing and Hunting	0.42	0.43	0.41	1.13	1.18	1.18
Mining, Quarrying, and Oil and Gas Extraction	0.36	0.56	0.61	0.09	0.16	0.20
Utilities	2.10	0.62	1.40	2.44	0.72	1.64
Construction	2.05	2.04	1.69	1.85	2.06	1.48
Manufacturing	0.71	0.60	0.41	0.58	0.53	0.38
Wholesale Trade	0.32	0.37	0.35	0.29	0.36	0.37
Retail Trade	1.35	1.29	1.08	1.18	1.15	1.01
Transportation and Warehousing	0.23	0.29	0.35	0.22	0.30	0.32
Information	0.31	0.00	0.36	0.48	0.00	0.49
Finance and Insurance	1.34	1.42	1.65	0.89	1.08	1.36
Real Estate and Rental and Leasing	0.97	1.07	0.84	1.04	1.18	0.95
Professional, Scientific, and Technical Services	0.64	0.54	0.84	0.71	0.64	1.02
Management of Companies and Enterprises	0.18	0.41	0.16	0.17	0.37	0.14
Administrative and Support and Waste Management and Remediation Services	0.92	0.95	0.96	0.94	0.99	0.98
Educational Services	1.14	0.09	1.21	1.14	0.08	1.14
Health Care and Social Assistance	0.80	0.86	1.05	0.88	0.88	0.85
Arts, Entertainment, and Recreation	2.44	1.76	1.58	2.95	1.80	1.95
Accommodation and Food Services	1.35	1.52	1.29	1.37	1.46	1.31
Other Services (except Public Administration)	1.11	0.03	0.74	1.17	0.03	1.09
Public Administration	1.34	1.09	1.29	1.33	1.06	1.27

Source: BLS, QCEW; Calculations by National Economic Education Delegation

4. Location Quotients: 3-digit NAICS

**Table 4.1: Location Quotients for 3-Digit NAICS Industries
(Q4 of each year.)**

NAICS Industry	LQ vs California			LQ vs United States		
	Current	5 Years Ago	2000	Current	5 Years Ago	2000
Crop Production	0.73	0.53	0.68	1.69	1.33	1.97
Support Activities for Agriculture and Forestry	0.16	0.16	0.09	0.77	0.75	0.44
Utilities	2.10	0.62	1.40	2.44	0.72	1.64
Construction of Buildings	2.04	2.02	1.83	1.92	2.14	1.72
Heavy and Civil Engineering Construction	1.17	0.65	0.54	0.78	0.48	0.36
Specialty Trade Contractors	2.22	2.30	1.88	2.11	2.44	1.72
Food Manufacturing	0.25	0.26	0.11	0.20	0.21	0.10
Beverage and Tobacco Product Manufacturing	1.87	1.74	1.30	3.05	3.16	2.68
Fabricated Metal Product Manufacturing	0.86	0.66	0.90	0.60	0.50	0.71
Machinery Manufacturing	1.09	0.67	0.44	0.60	0.41	0.26
Computer and Electronic Product Manufacturing	0.29	0.19	0.21	0.55	0.44	0.48
Transportation Equipment Manufacturing	0.62	0.64	0.23	0.46	0.41	0.15
Miscellaneous Manufacturing	0.88	0.82	1.16	1.02	0.98	1.46
Merchant Wholesalers, Durable Goods	0.42	0.39	0.41	0.36	0.36	0.41
Merchant Wholesalers, Nondurable Goods	0.21	0.25	0.25	0.22	0.28	0.28
Motor Vehicle and Parts Dealers	1.23	1.15	1.10	0.96	0.91	0.94
Building Material and Garden Equipment and Supplies Dealers	1.57	1.55	1.49	1.22	1.28	1.27
Food and Beverage Stores	1.59	1.86	1.55	1.60	1.85	1.60
Truck Transportation	0.35	0.28	0.17	0.29	0.23	0.13
Postal Service	0.92	0.94	0.84	0.74	0.82	0.79
Telecommunications	0.70	0.44	0.42	0.50	0.34	0.40
Data Processing, Hosting and Related Services	0.47	0.19	0.00	0.67	0.24	0.00
Credit Intermediation and Related Activities	0.74	0.66	0.76	0.48	0.50	0.64
Insurance Carriers and Related Activities	2.37	2.65	3.27	1.46	1.90	2.54
Real Estate	0.97	1.02	0.79	1.07	1.17	0.92
Professional, Scientific, and Technical Services	0.64	0.54	0.84	0.71	0.64	1.02
Management of Companies and Enterprises	0.18	0.41	0.16	0.17	0.37	0.14
Administrative and Support Services	0.88	0.91	0.86	0.90	0.95	0.87
Waste Management and Remediation Services	1.70	1.78	3.10	1.65	1.72	2.89
Educational Services	1.14	0.09	1.21	1.14	0.08	1.14
Ambulatory Health Care Services	0.79	0.90	0.84	0.81	0.88	0.79
Social Assistance	0.68	0.75	0.00	1.27	1.27	0.00
Amusement, Gambling, and Recreation Industries	3.40	2.55	2.09	3.97	2.37	2.61
Accommodation	2.10	1.95	1.78	2.20	1.90	1.83
Food Services and Drinking Places	1.22	1.46	1.20	1.23	1.40	1.21
Repair and Maintenance	1.14	1.18	1.04	1.04	1.14	1.09
Personal and Laundry Services	1.17	1.20	0.97	1.26	1.07	0.94
Religious, Grantmaking, Civic, Professional, and Similar Organizations	1.07	1.03	0.90	1.16	1.01	0.95
Private Households	0.89	0.00	0.40	1.41	0.00	1.66
Executive, Legislative, and Other General Government Support	1.38	1.22	1.32	0.91	0.76	0.82
Justice, Public Order, and Safety Activities	1.09	1.07	1.09	1.32	1.33	1.49
Administration of Human Resource Programs	1.14	0.03	0.05	1.78	0.05	0.07
Administration of Environmental Quality Programs	4.69	3.70	3.22	7.75	5.61	4.76
Administration of Economic Programs	0.63	0.39	0.37	0.68	0.40	0.40

Source: BLS, QCEW; Calculations by National Economic Education Delegation

Note: Top 50 industries, by employment share.

5. Location Quotients: 4-digit NAICS

**Table 5.1: Location Quotients for 4-Digit NAICS Industries
(Q4 of each year.)**

NAICS Industry	LQ vs California			LQ vs United States		
	Current	5 Years Ago	2000	Current	5 Years Ago	2000
Fruit and Tree Nut Farming	1.01	0.79	1.05	4.57	3.68	4.87
Electric Power Generation, Transmission and Distribution	2.70	3.00	0.00	1.90	1.06	0.00
Water, Sewage and Other Systems	3.93	0.00	3.76	4.63	0.00	5.23
Residential Building Construction	1.74	1.61	1.36	1.96	1.99	1.62
Nonresidential Building Construction	2.47	2.67	2.53	1.87	2.29	1.80
Foundation, Structure, and Building Exterior Contractors	1.77	1.57	2.55	1.89	1.87	2.41
Building Equipment Contractors	2.67	3.02	1.84	2.25	2.83	1.45
Building Finishing Contractors	1.30	1.45	0.91	1.78	2.14	1.15
Other Specialty Trade Contractors	3.08	2.82	2.82	2.27	2.29	2.33
Beverage Manufacturing	1.87	1.74	1.30	3.17	3.29	2.95
Automobile Dealers	1.03	0.90	0.70	0.83	0.72	0.60
Automotive Parts, Accessories, and Tire Stores	1.79	1.93	1.63	1.40	1.53	1.39
Building Material and Supplies Dealers	1.48	1.48	1.44	1.19	1.26	1.26
Grocery Stores	1.63	1.96	1.66	1.66	1.97	1.70
Depository Credit Intermediation	1.10	0.93	1.01	0.63	0.61	0.84
Agencies, Brokerages, and Other Insurance Related Activities	3.46	4.30	0.00	2.42	3.62	0.00
Activities Related to Real Estate	0.99	0.89	0.61	1.19	1.14	0.87
Architectural, Engineering, and Related Services	1.17	0.78	0.74	1.13	0.82	0.80
Computer Systems Design and Related Services	0.53	0.41	0.73	0.61	0.53	0.88
Management, Scientific, and Technical Consulting Services	0.90	0.79	0.51	0.94	0.90	0.75
Other Professional, Scientific, and Technical Services	1.61	1.69	1.61	1.27	1.41	1.50
Office Administrative Services	2.11	1.74	0.42	1.70	1.97	0.66
Business Support Services	3.44	3.45	2.67	1.68	1.89	1.46
Investigation and Security Services	1.03	0.88	0.11	1.42	1.19	0.14
Services to Buildings and Dwellings	1.42	1.58	0.95	1.36	1.57	0.94
Elementary and Secondary Schools	1.58	1.52	0.05	1.52	1.33	0.05
Junior Colleges	1.27	0.00	0.00	1.87	0.00	0.00
Other Schools and Instruction	0.90	1.29	0.90	1.38	1.72	1.28
Offices of Physicians	0.93	0.95	0.66	0.73	0.76	0.63
Offices of Dentists	1.44	1.50	1.56	1.65	1.74	1.86
Offices of Other Health Practitioners	1.34	1.31	1.47	1.36	1.23	1.22
Outpatient Care Centers	0.36	0.42	0.27	0.75	0.80	0.35
Nursing Care Facilities	0.99	0.92	1.00	0.79	0.68	0.62
Community Care Facilities for the Elderly	1.85	1.85	1.20	1.79	1.67	0.97
Individual and Family Services	0.65	0.66	0.85	1.49	1.42	0.61
Child Day Care Services	1.09	1.58	1.74	0.81	1.05	1.19
Gambling Industries	8.88	0.00	0.00	13.60	0.00	0.00
Traveler Accommodation	1.95	1.84	1.63	2.06	1.80	1.68
Automotive Repair and Maintenance	1.25	1.39	1.26	1.27	1.41	1.37
Personal Care Services	1.68	1.78	1.30	1.93	1.49	1.14
Executive, Legislative, and Other General Government Support	1.38	1.22	1.32	0.91	0.76	0.82
Justice, Public Order, and Safety Activities	1.09	1.07	1.09	1.32	1.33	1.49
Administration of Human Resource Programs	1.14	0.03	0.05	1.78	0.05	0.07
Administration of Environmental Quality Programs	4.69	3.70	3.22	7.75	5.61	4.76

Source: BLS, QCEW; Calculations by National Economic Education Delegation

Note: Top 50 industries, by employment share.