



Social Security – Hard Choices (?)

*Parkway United Church of Christ
Town and Country, MO
April 26, 2026*

**Jon Haveman, Ph.D.
NEED**



Outline

- **What is Social Security?**
- **How Does Social Security Work?**
- **What is The Trouble with Social Security?**
- **Available Solutions**

What is Social Security?



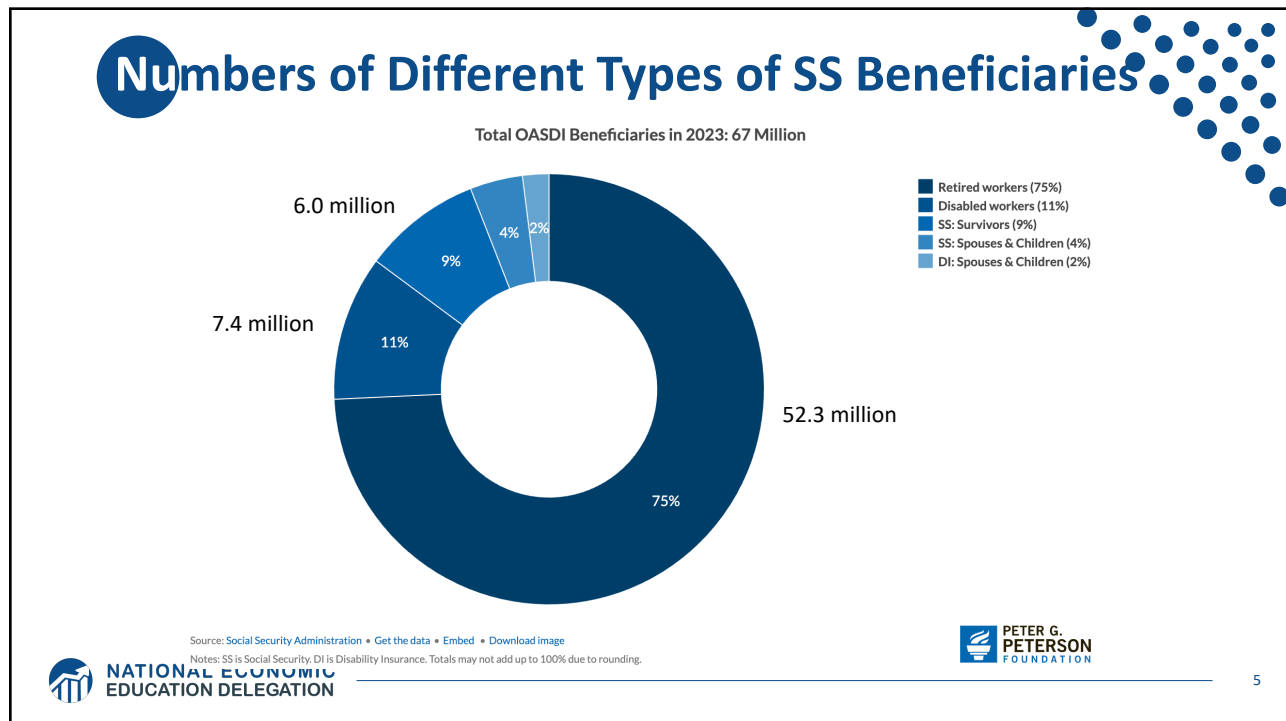
3

What is Social Security?

- Social Security is a federal social insurance program that provides financial support to workers and their families.
- Different benefits:
 - **Retirement Benefits:** Social Security provides monthly payments to qualified retirees based on their lifetime earnings.
 - **Disability Benefits:** It provides financial support to individuals who are unable to work due to a disability.
 - **Survivor Benefits:** Social Security offers benefits to the families of deceased workers, including spouses and children.



4



5

Social Security's Origins

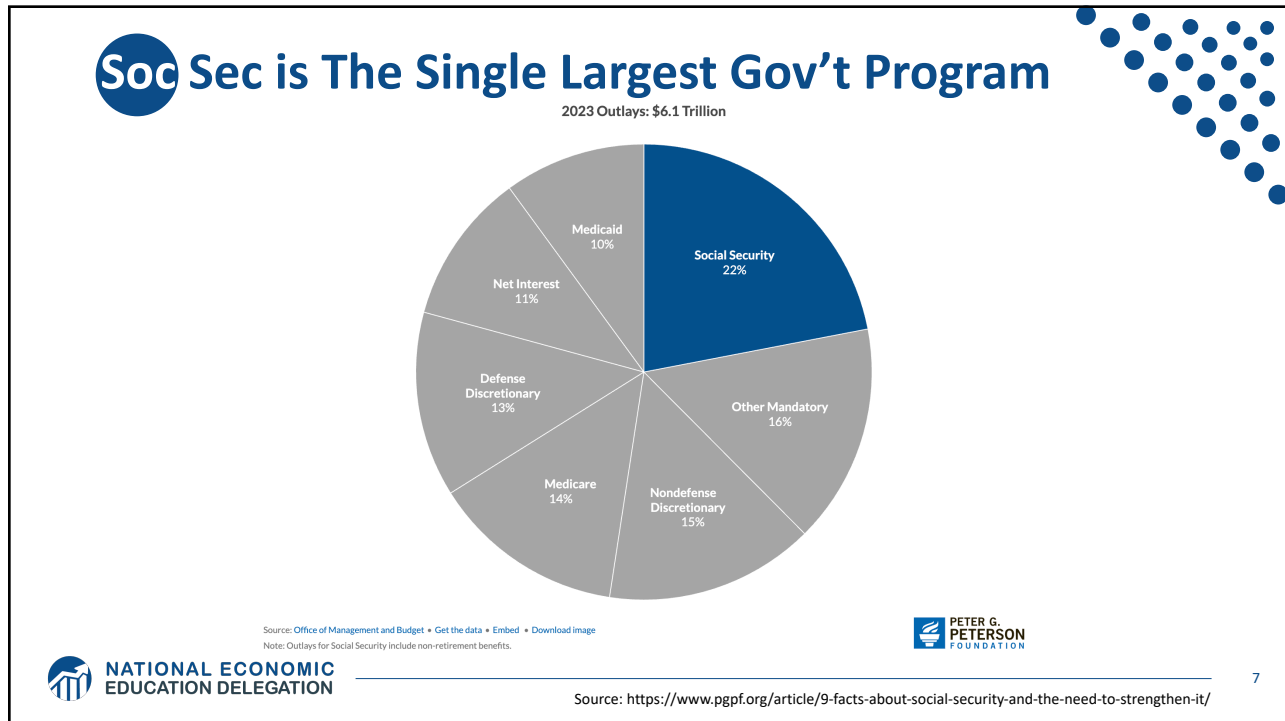
- A part of the social safety net.
- Created in 1935 to provide economic security to the nation's elderly.
- Expanded in 1939 to include dependent benefits.
 - Benefits to families that have lost a breadwinner.
- Expanded in 1950 to provide support for people with disabilities.
- Expanded in 1974 to provide Supplemental Security Income.
 - Can supplement regular social security benefits.
- Today, it is the largest federal program.
 - In FY 2024, spending was \$1.25 trillion, or 22.4% of total federal spending.
 - By comparison, national defense was \$997 billion.

NATIONAL ECONOMIC EDUCATION DELEGATION

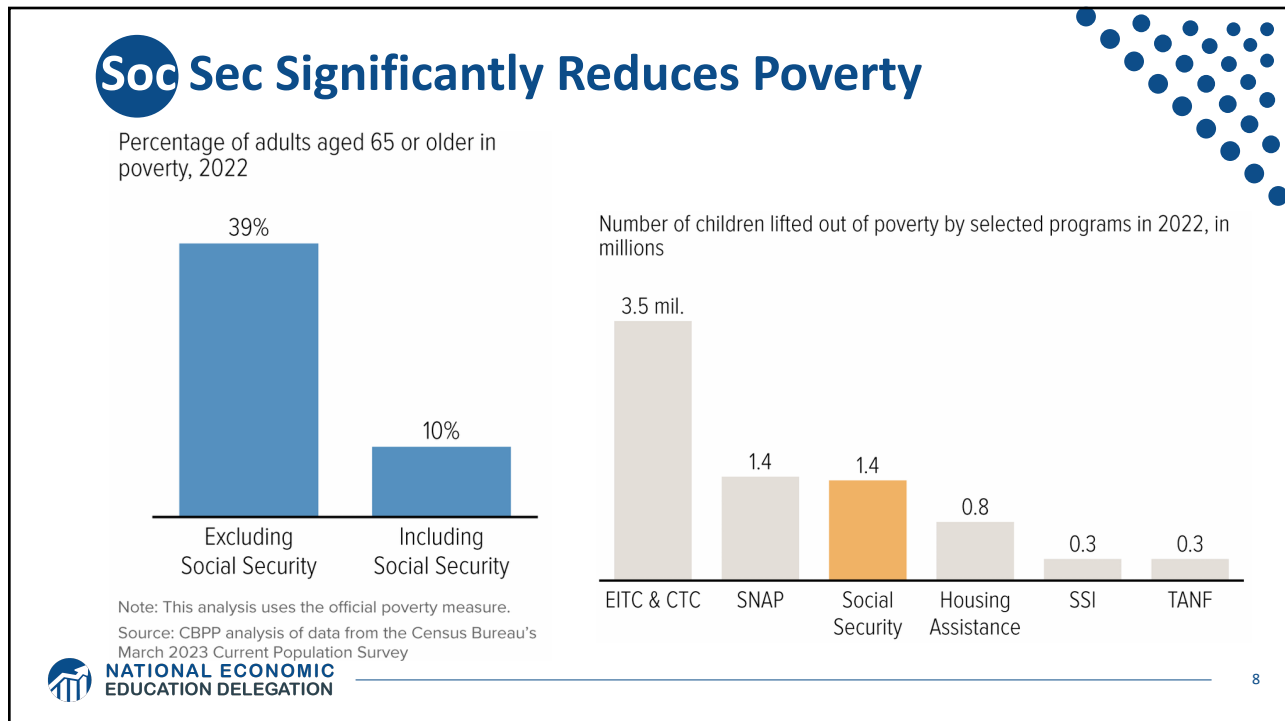
PETER G. PETERSON FOUNDATION

6

6



7



8

Is Social Security Good for Just The Beneficiaries?

No, it also benefits broader society.



NATIONAL ECONOMIC
EDUCATION DELEGATION

9

9

Economic Impacts on Individuals and Families

- **Poverty reduction**
 - Good investment for society.
- **Reduces income inequality among the elderly**
- **Increases social mobility**
- **Income stability**
 - Helps households plan for the future.
- **Enables older adults to maintain independence**
 - Reduces caregiving burdens on family members.
- **Consumer spending**
 - Supports businesses and the local economy.



NATIONAL ECONOMIC
EDUCATION DELEGATION

10

10

How Does it Work?



11

The Mechanics of Social Security

- **“pay-as-you-go” system**

- Payroll taxes are collected from current workers.
- These pay for the benefits of the currently retired, or otherwise eligible.

- **Taxes**

- Payroll taxes amount to 12.4% of earnings.
 - Workers pay 6.2% of earnings as payroll taxes.
 - Employers also pay 6.2% of worker’s earnings.
- **Earnings Cap.** Not all earnings are subject to payroll taxes.
 - In 2026, only the first \$184,500 of earnings are taxed.
 - Earnings above that level are not taxed.



12

The Cap Causes The Tax Rate to Fall w/Income

Payroll Taxes are **Regressive**

The annual limit on wage earnings subject to Social Security taxes is set to \$176,100 for 2025. As a result, Taxpayer C pays a lower share of their income in payroll taxes compared to those who earn less.

	TAXPAYER A	TAXPAYER B	TAXPAYER C
Wages	\$36,000	\$72,000	\$216,000
Social Security Payroll Tax Owed	\$2,232	\$4,464	\$10,918
Effective Tax Rate	6.2%	6.2%	5.1%

NOTE: Taxpayer B based on average wage index for 2025.



NATIONAL ECONOMIC
EDUCATION DELEGATION



13

13

What if Payroll Taxes Don't Match Benefits?

• The Trust Fund

- If revenues exceed benefits, the excess is placed in a trust fund.
- If benefits exceed revenues, the excess is taken out of the trust fund.
- The funds in the trust are invested in **non**marketable U.S. Treasuries.
 - o So, really just bookkeeping.

• When did the Trust Fund start?

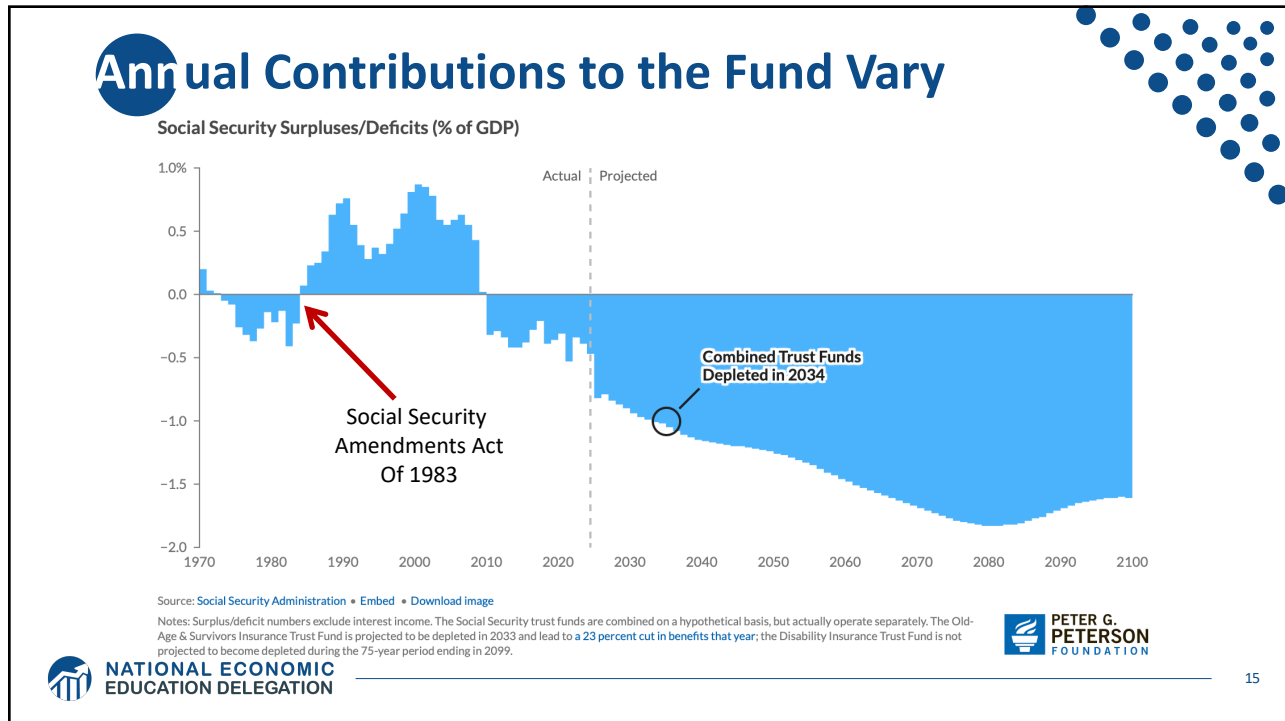
- The OASI Trust Fund was created in 1939. (Old Age & Survivors Ins)
- The Disability Trust Fund was created in 1956.



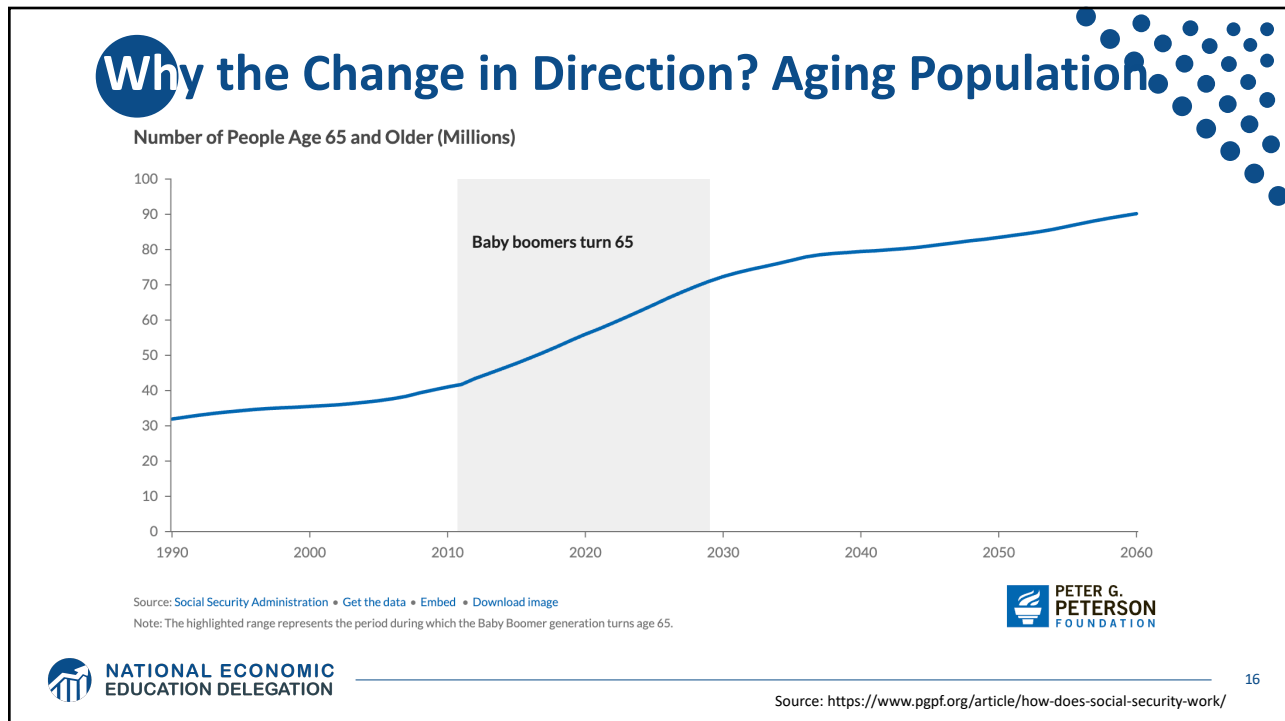
NATIONAL ECONOMIC
EDUCATION DELEGATION

14

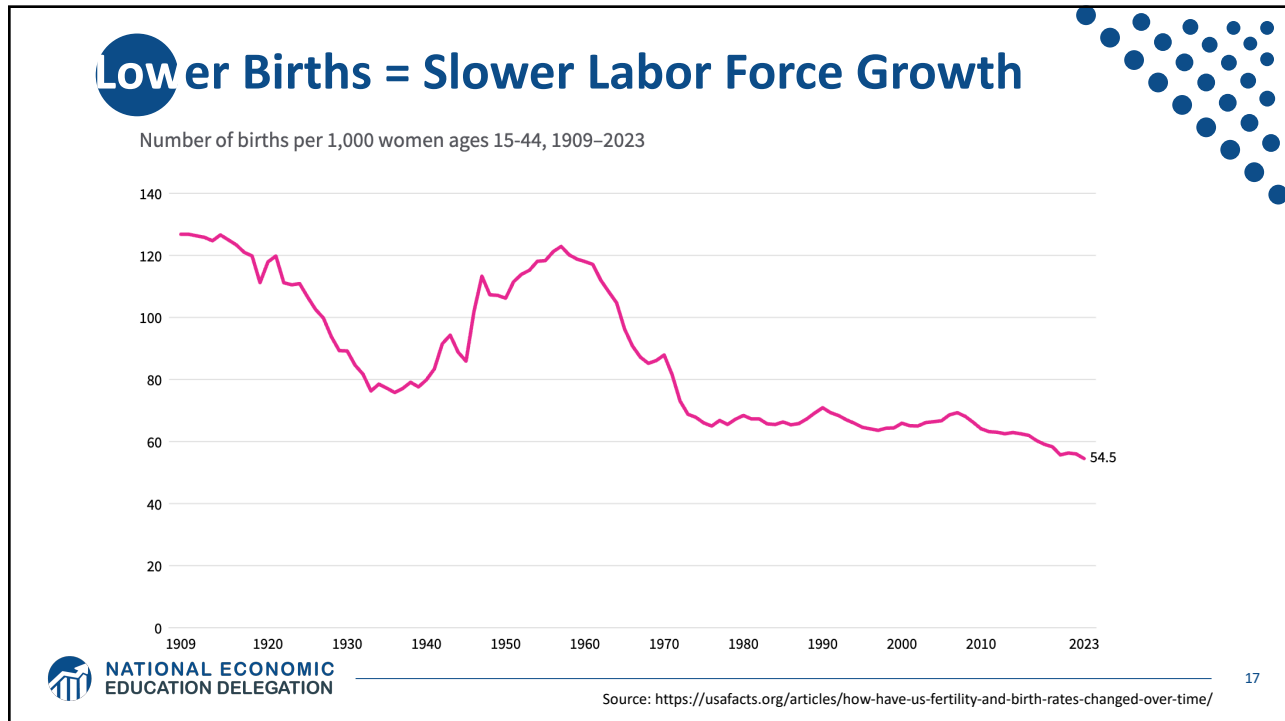
14



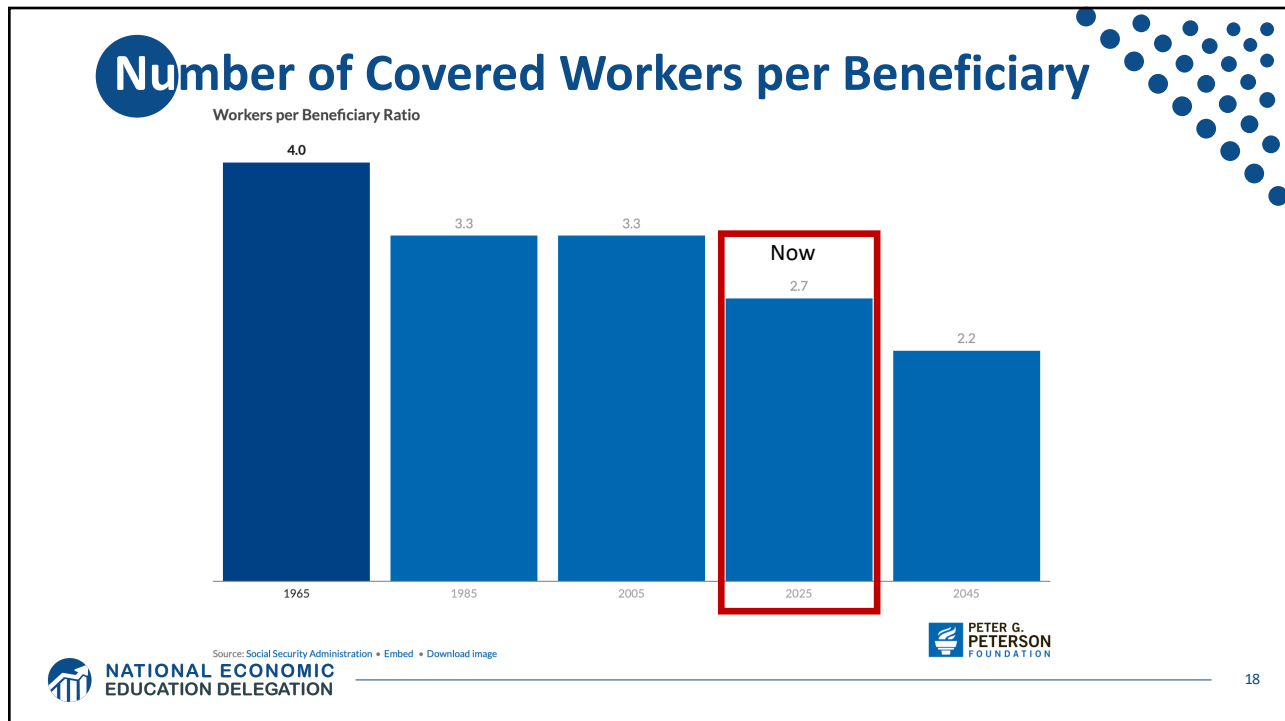
15



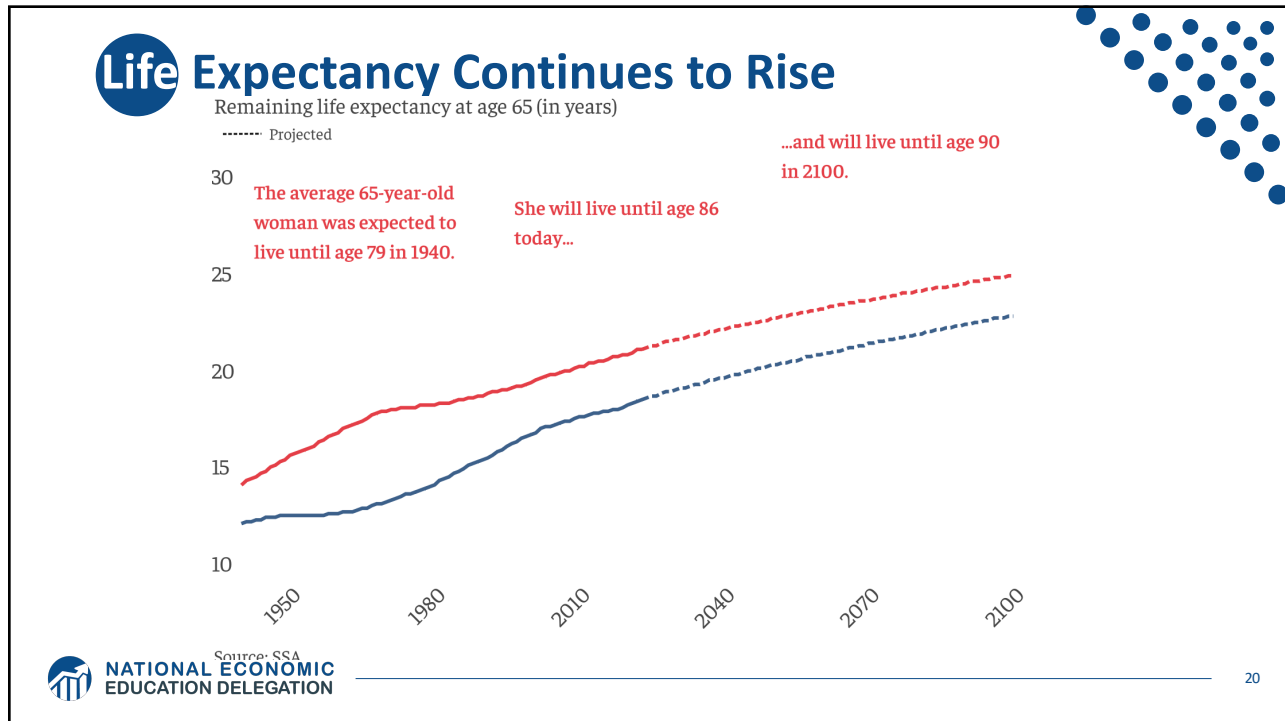
16



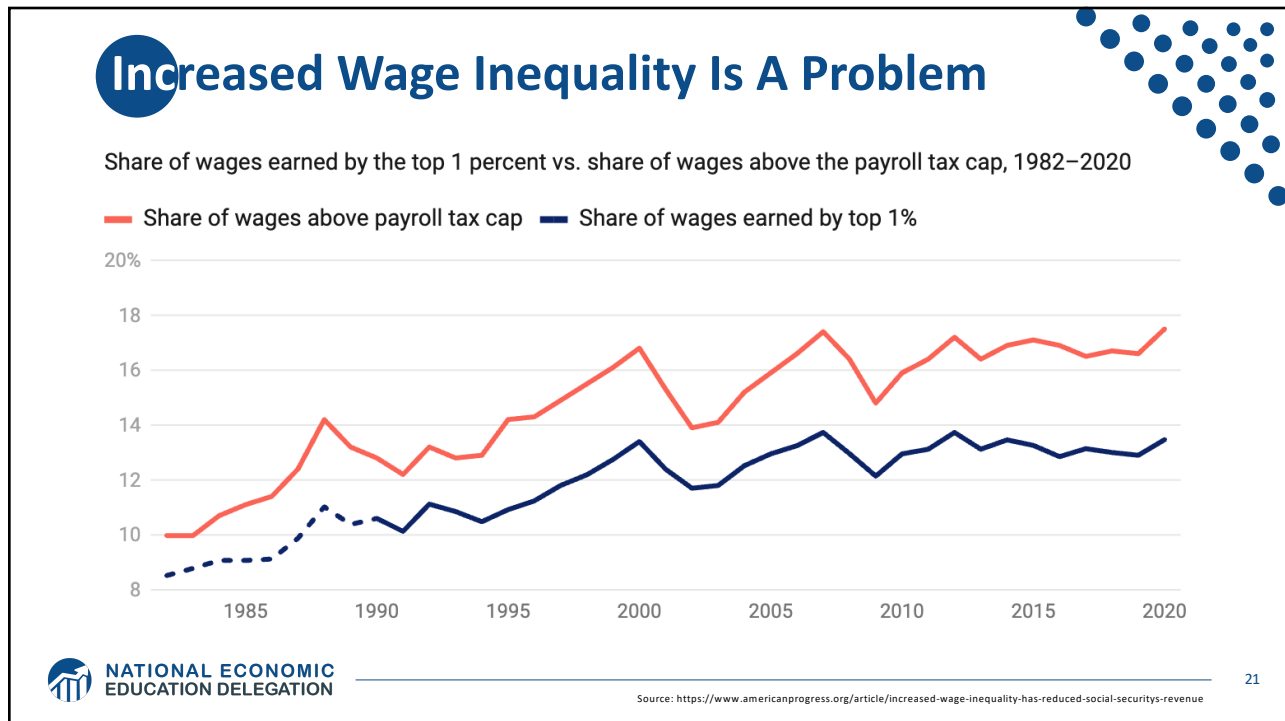
17



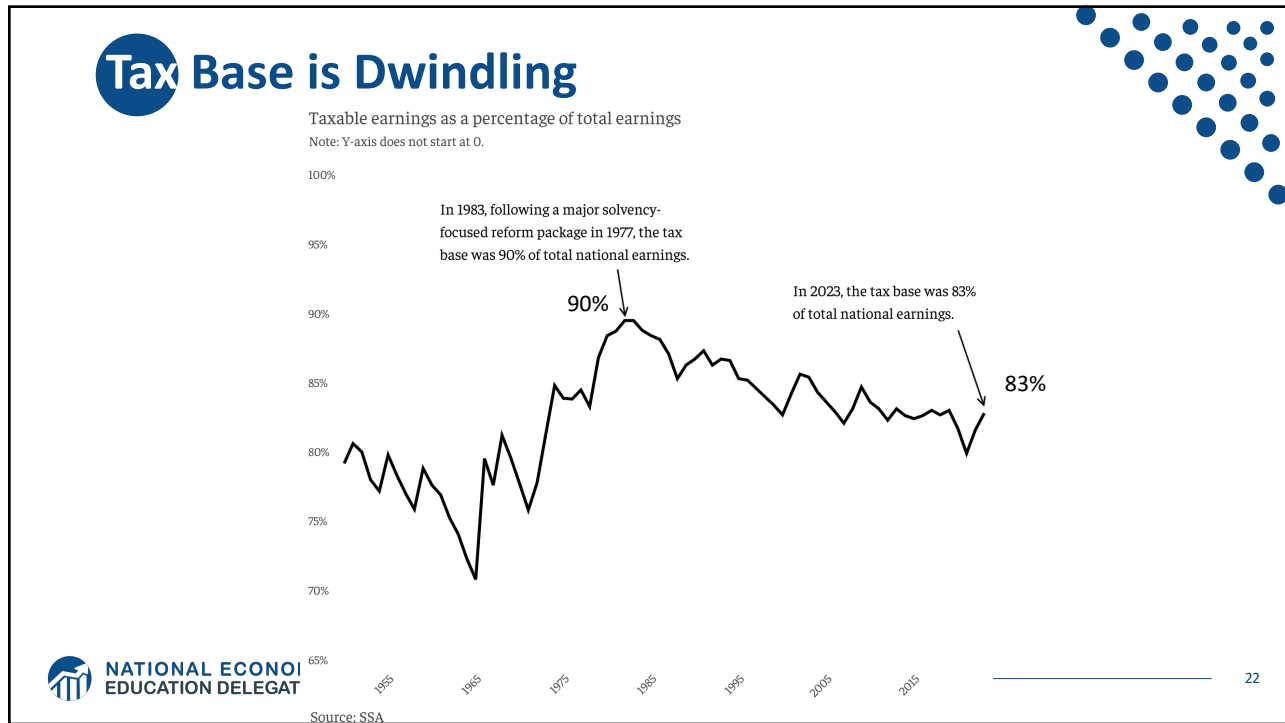
18



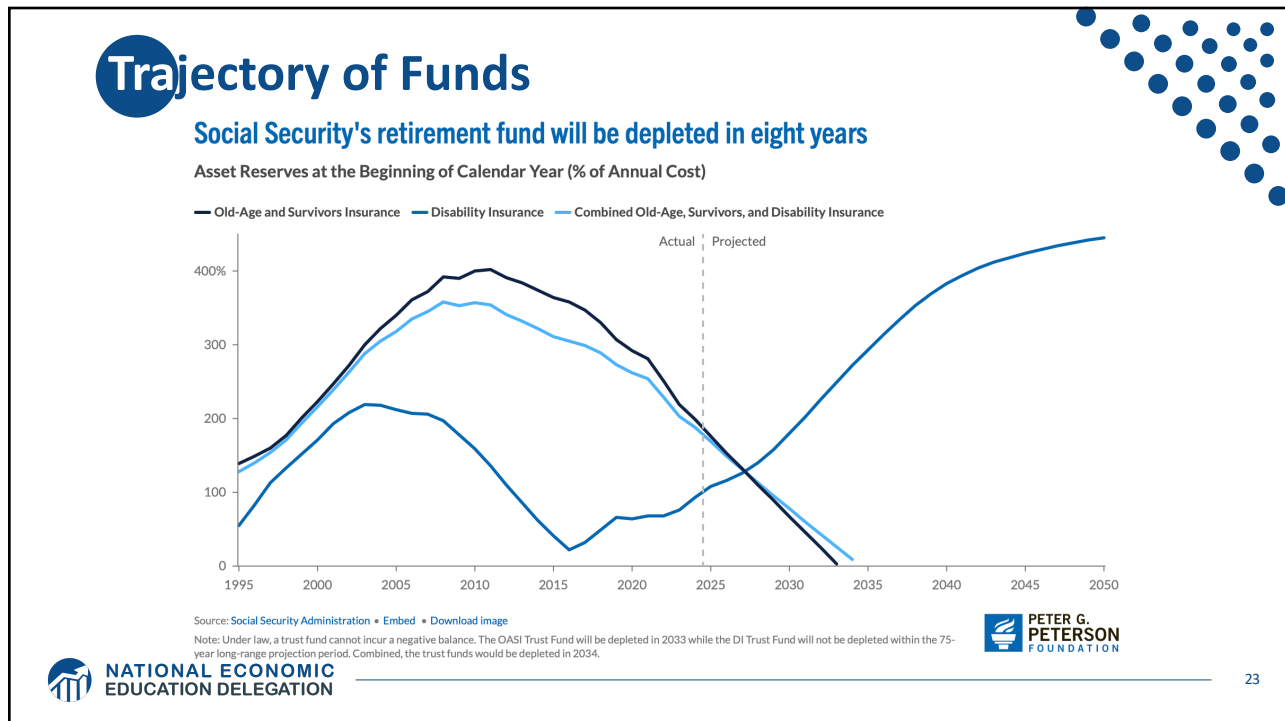
20



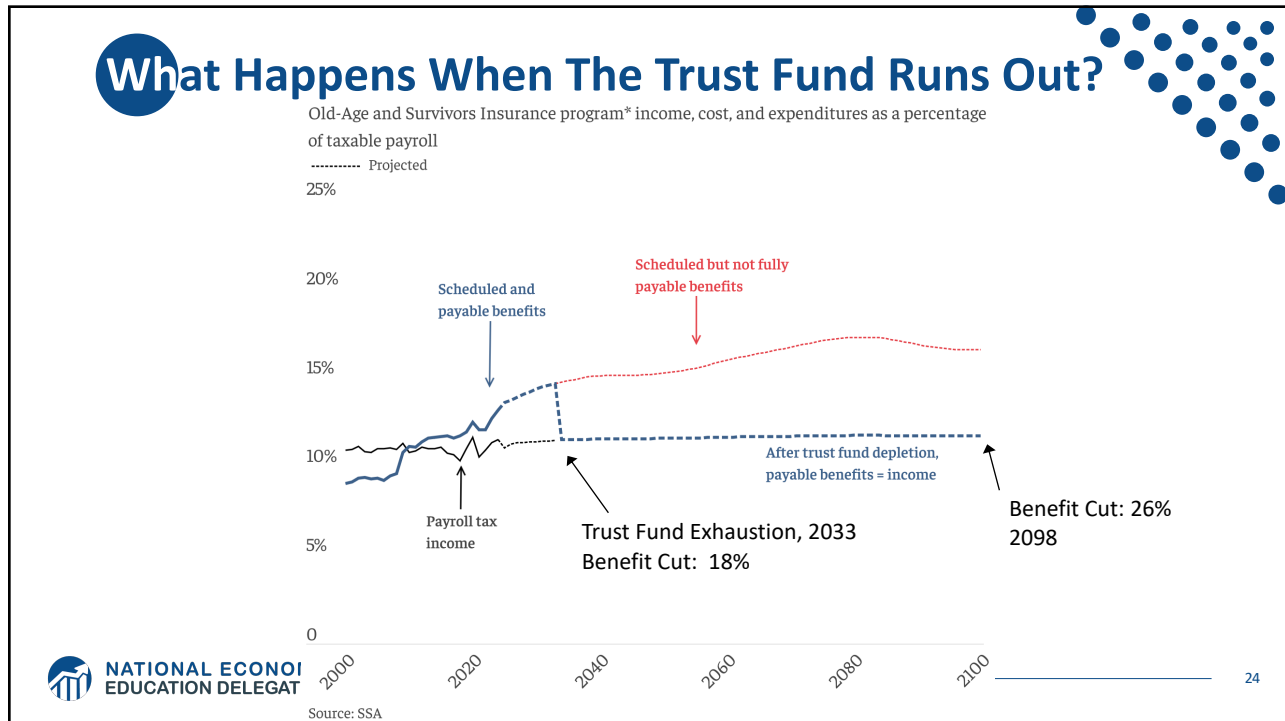
21



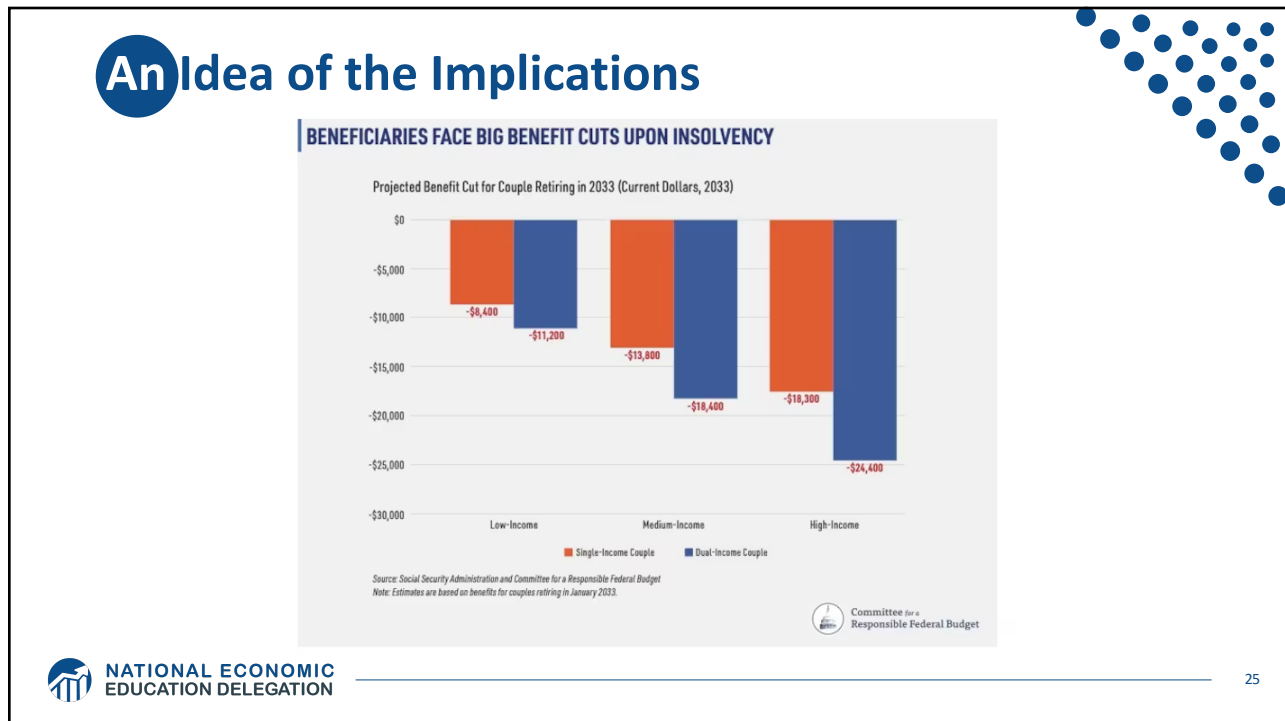
22



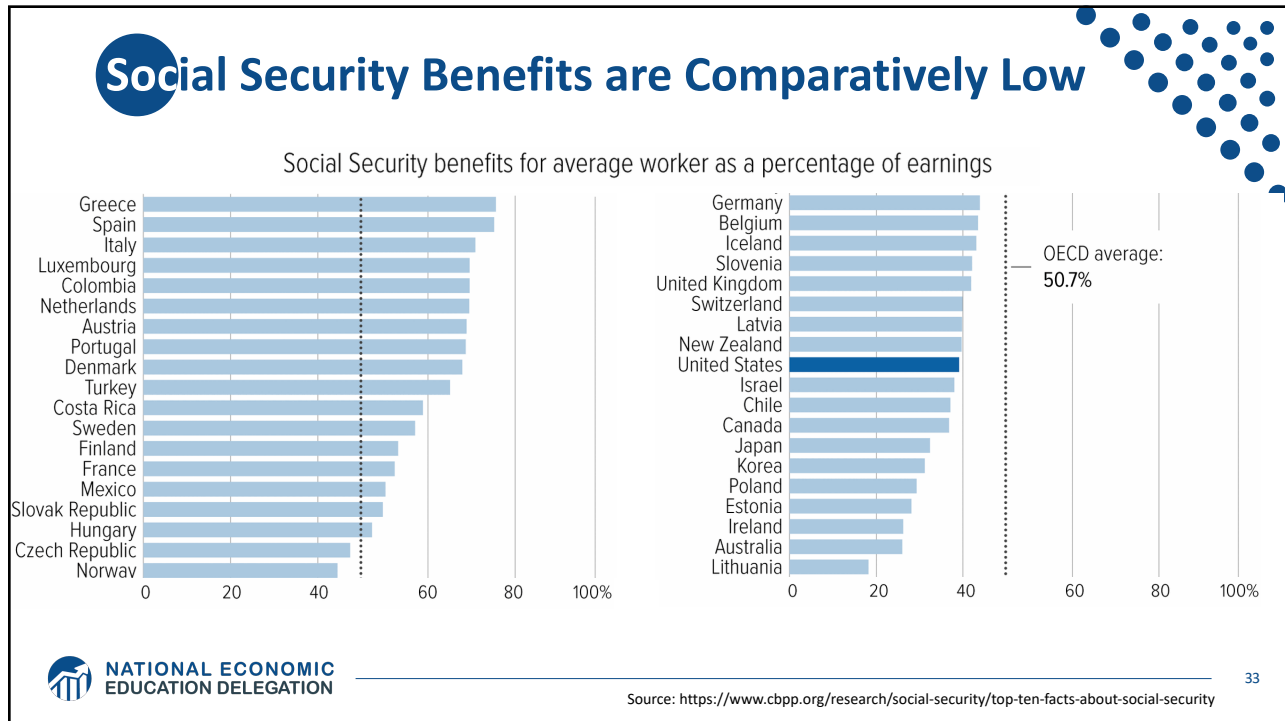
23



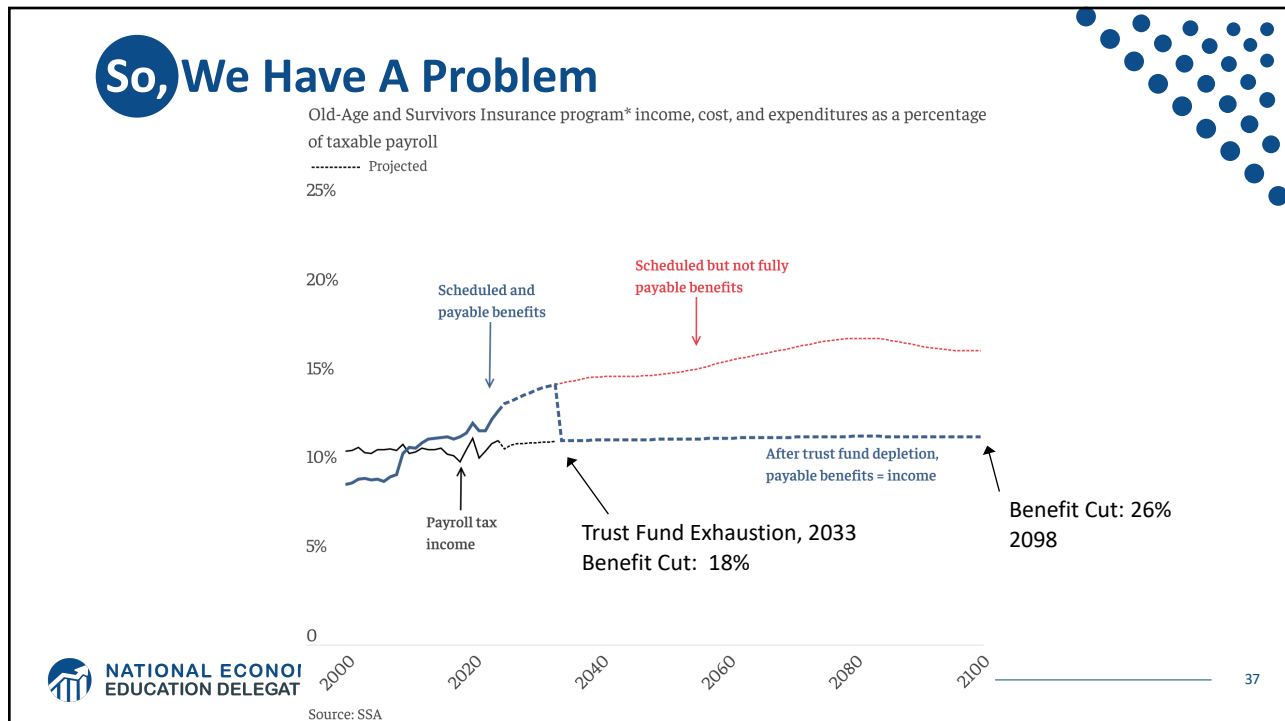
24



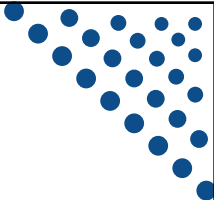
25




33



37

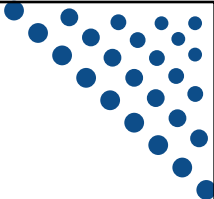


Hard Choices (?)

 NATIONAL ECONOMIC
EDUCATION DELEGATION

38

38




Let's Cut to the Chase...

- Solving the social security problem is simple:

Backfill out of general revenues!
- Why won't this happen?

Politics!
Our debt situation.
Maybe it shouldn't.

 NATIONAL ECONOMIC
EDUCATION DELEGATION

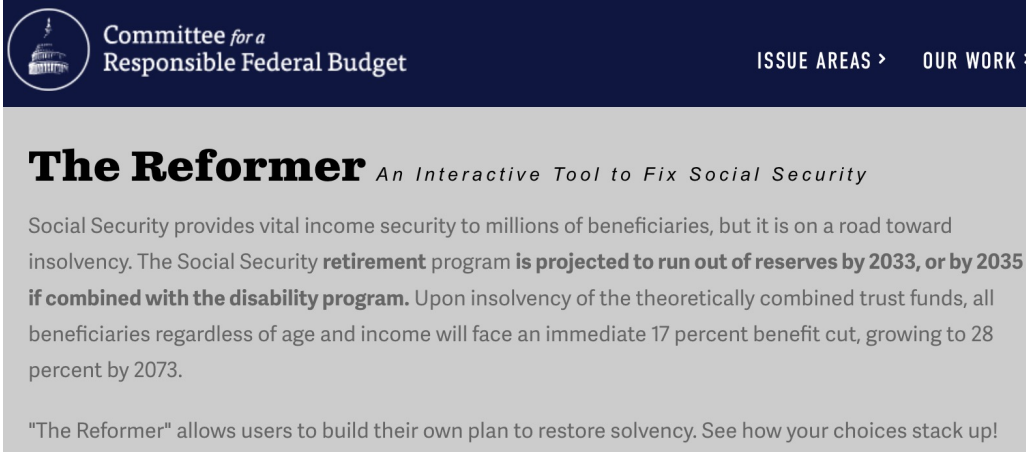
39


39

Let's Consider Some Other Options

- Changes to revenues
- Changes to benefits

The Following Simulations Brought to you by:



 Committee for a Responsible Federal Budget

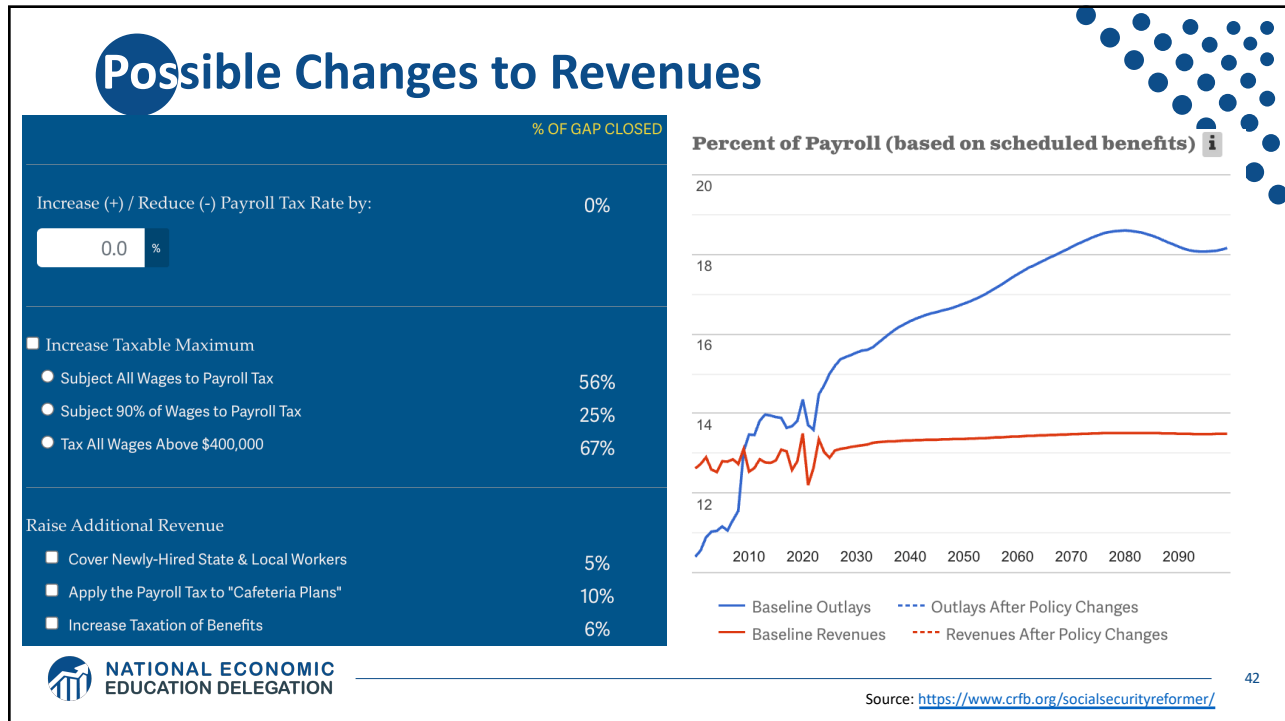
ISSUE AREAS > OUR WORK >

The Reformer *An Interactive Tool to Fix Social Security*

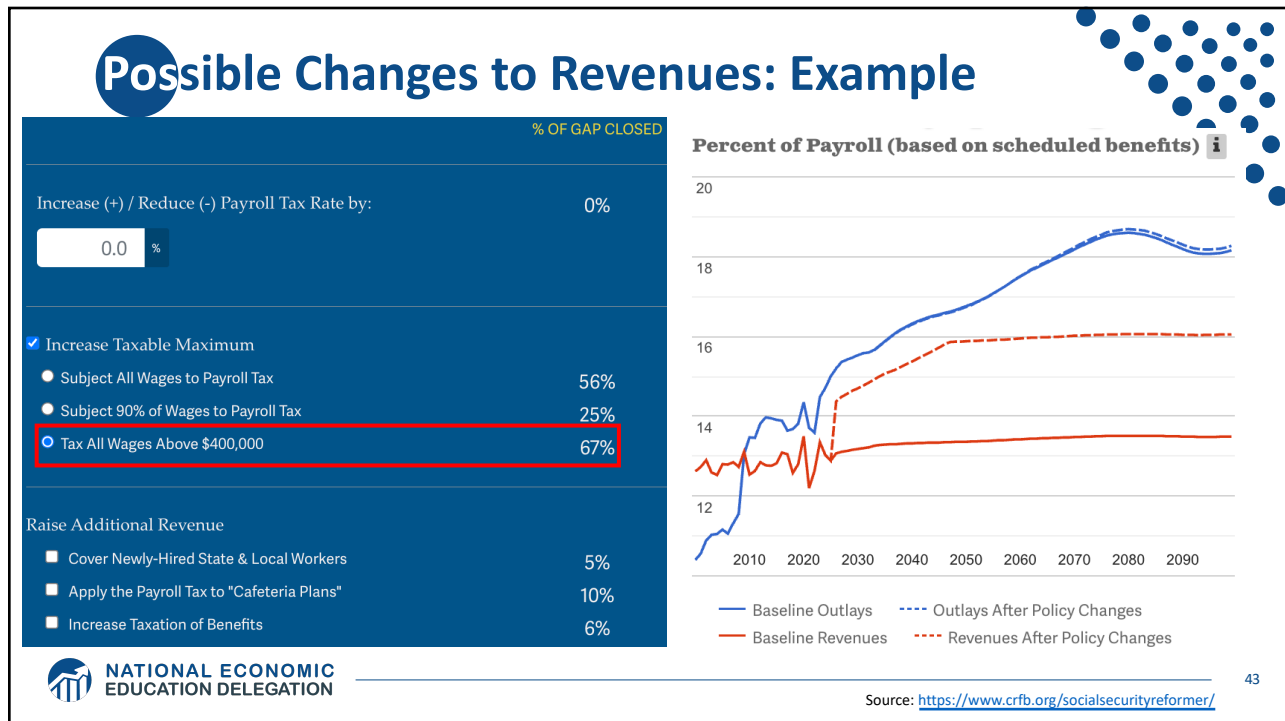
Social Security provides vital income security to millions of beneficiaries, but it is on a road toward insolvency. The Social Security **retirement** program is **projected to run out of reserves by 2033, or by 2035 if combined with the disability program**. Upon insolvency of the theoretically combined trust funds, all beneficiaries regardless of age and income will face an immediate 17 percent benefit cut, growing to 28 percent by 2073.

"The Reformer" allows users to build their own plan to restore solvency. See how your choices stack up!

<https://www.crfb.org/socialsecurityreformer/>



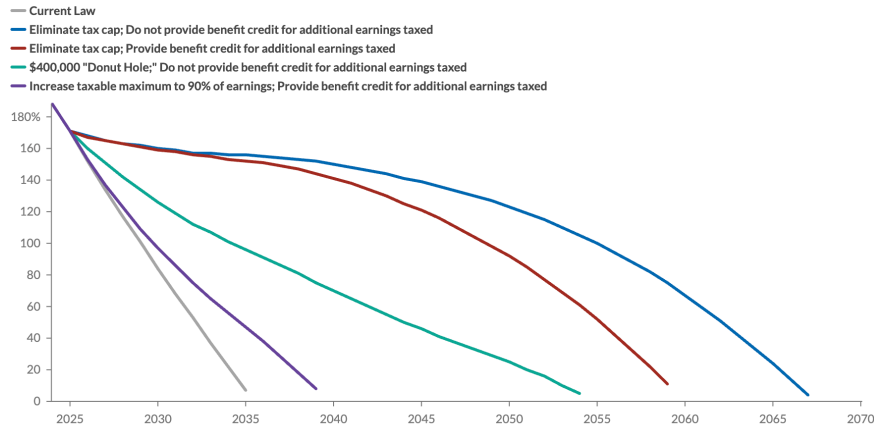
42



43

Changing the Cap Can Go A Long Way...

Asset Reserves of Combined OASDI Trust Fund (% of Annual Costs)



Source: Social Security Administration • Embed • Download image
 Notes: Data are from 2024 Trustees Report. OASDI is the hypothetically combined Old-Age and Survivors Insurance and Disability Insurance. Last year with data indicates year in which trust fund reaches insolvency.

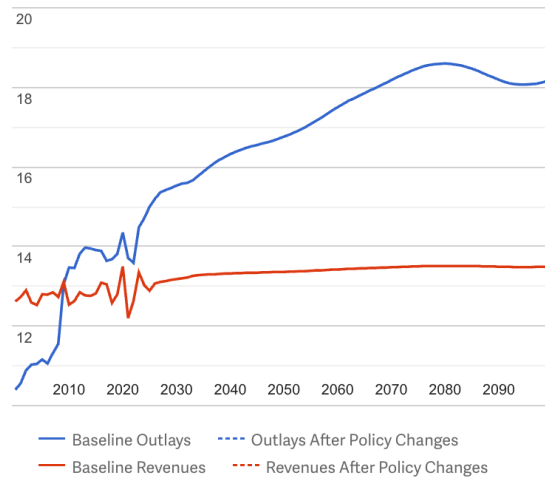


44

Possible Changes to Benefits

	% OF GAP CLOSED
Increase (+) / Reduce (-) Initial Benefits by:	0%
<input type="text" value="0.0"/> %	
<input checked="" type="checkbox"/> Slow Initial Benefit Growth	
• Slow Benefit Growth for Top 70% of Earners	60%
• Slow Benefit Growth for Top Half of Earners	36%
• Slow Benefit Growth for Top 20% Of Earners	11%
<input checked="" type="checkbox"/> Increase Retirement Age	
• Raise Age from 67 to 68	13%
• Index Age to Longevity After it Reaches 67	20%
• Raise Age to 69 then index to Longevity	39%

Percent of Payroll (based on scheduled benefits)



Source: <https://www.cfb.org/socialsecurityreformer/>

45

Possible Changes to Benefits: Example

% OF GAP CLOSED

Increase (+) / Reduce (-) Initial Benefits by: 0%

0.0 %

Slow Initial Benefit Growth

- Slow Benefit Growth for Top 70% of Earners 60%
- Slow Benefit Growth for Top Half of Earners 36%
- Slow Benefit Growth for Top 20% Of Earners 11%

Increase Retirement Age

- Raise Age from 67 to 68 13%
- Index Age to Longevity After it Reaches 67 20%
- Raise Age to 69 then index to Longevity 39%

Percent of Payroll (based on scheduled benefits) i

— Baseline Outlays - - - Outlays After Policy Changes
— Baseline Revenues - - - Revenues After Policy Changes

NATIONAL ECONOMIC
EDUCATION DELEGATION

46

Source: <https://www.crfb.org/socialsecurityreformer/>

46

Suppose We Do Both! Problem Solved

Percent of Payroll (based on scheduled benefits) i

— Baseline Outlays - - - Outlays After Policy Changes
— Baseline Revenues - - - Revenues After Policy Changes

Trust Fund Projections i

Percent of Annual Benefits i

— Baseline - - - After Policy Changes

NATIONAL ECONOMIC
EDUCATION DELEGATION

47

Source: <https://www.crfb.org/socialsecurityreformer/>

47

Some Additional Thoughts on Options

- **COLAs – cost of living adjustments**
 - Merely another way of reducing benefits
- **Raising the retirement age**
- **Investing in the stock market**

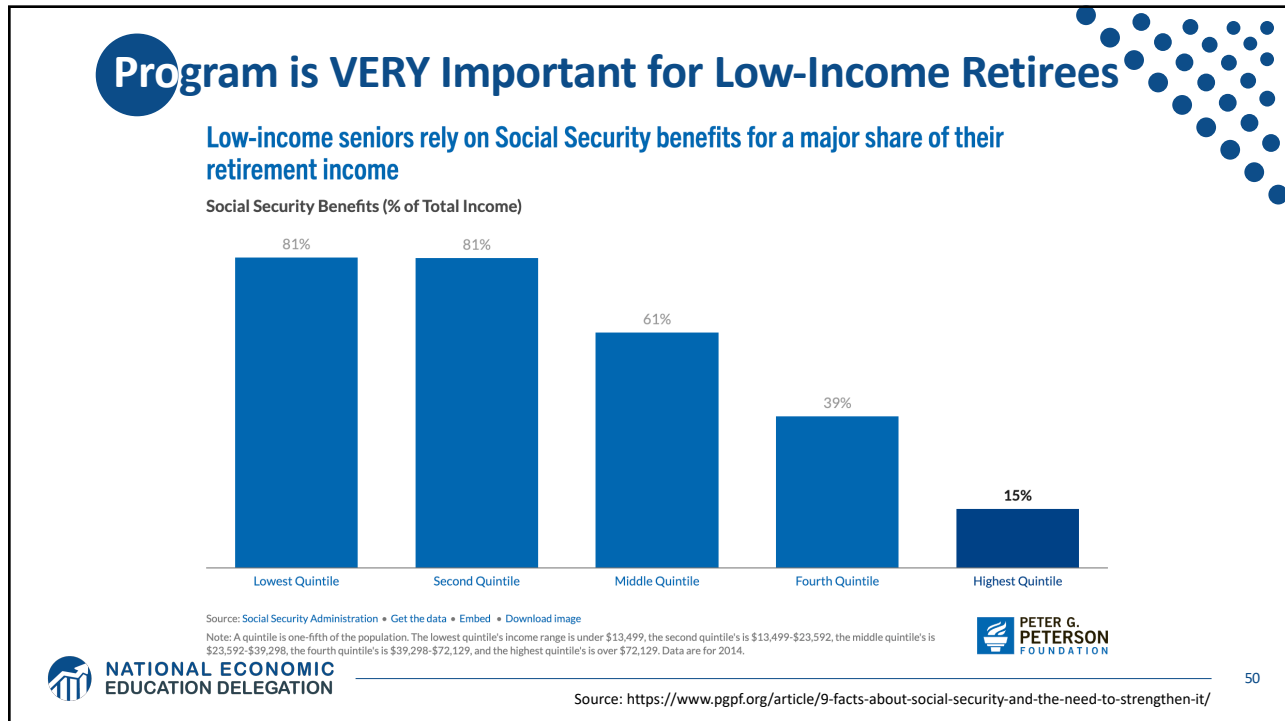
48

Raising the Retirement Age

■ Increase Retirement Age	
● Raise Age from 67 to 68	13%
● Index Age to Longevity After it Reaches 67	20%
● Raise Age to 69 then index to Longevity	39%

- **Very regressive.**
 - Larger tax on low-income workers than high income workers.

49



50

Raising the Retirement Age

Sex	Income Category	Life Expectancy (Years)	Difference High vs Low
Women	Highest Incomes (top 1%)	88.9	10.1 years
	Lowest Incomes (bottom 1%)	78.8	
Men	Highest Incomes (top 1%)	87.3	14.6 years
	Lowest Incomes (bottom 1%)	72.7	

NATIONAL ECONOMIC EDUCATION DELEGATION

51

Investing in the Stock Market

Invest in the Stock Market

- | | |
|--|-----|
| ● Diversify the Trust Fund to Increase Returns | 6% |
| ● Divert 2% of Payroll Tax to "Carve-Out" Accounts | -1% |
| ● Allow Contributions into "Add-on" Accounts | 0% |

1. **Doesn't do much to solve the problem.**
2. **Concerns with government investing in the stock market.**
3. **Logistics of allowing individuals to customize are enormous.**
 1. And subject to political influence.
4. **May increase the fragility of the system.**



52

Other Solution? Tax More Than Just Earnings

- **Social Security is funded through payroll taxes.**
- **Broadening the base would increase programmatic revenues.**
- **This begs the question of why the program is funded only by a tax on earnings.**
- **Other sources of income: capital gains.**
- **Social security is an economic security program.**
 - Yet its revenue source is earnings.
 - Is income a better indication of economic security?

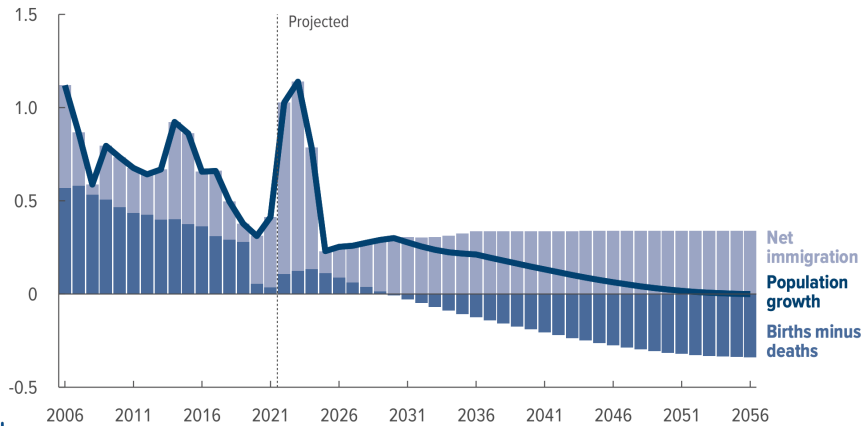


53

Another Solution?

- Increase legal immigration of prime working age.

Population Growth and Contributing Factors
Percent



NATIONAL ECONOMIC EDUCATION DELEGATION

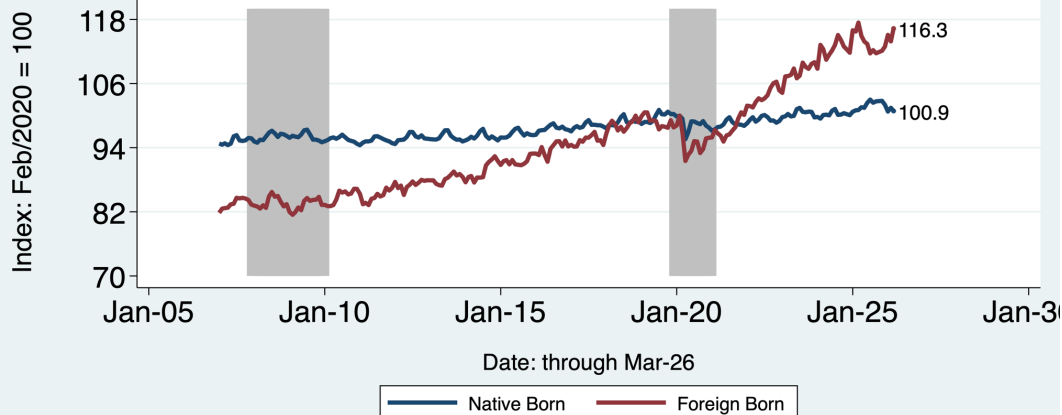
54

Source: <https://www.cbo.gov/system/files/2026-01/61879-Demographic-Outlook.pdf>

54

Immigrants to the Rescue?

Size of the Labor Force by Nativity



Source: Bureau of Labor Statistics. Gray shading indicates recession.
Graph by: National Economic Education Delegation (www.NEEDecon.org)



NATIONAL ECONOMIC EDUCATION DELEGATION

55

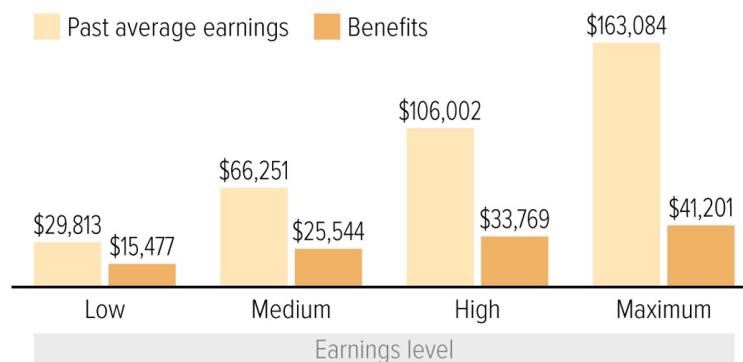
55

General Principle of Solutions

- Social security was originally created (primarily) to reduce economic instability among the elderly.
- Shouldn't solutions to the shortfall respect that original intent?
- Regressive solutions are anathema to the original intent, disproportionately reducing the program's effects on those most at risk of economic instability.
- Equality of contributions to the solution increase economic instability among the elderly.
- Progressive solutions are more likely to respect the original intent.

Social Security Benefits are Progressive

Annual benefits and earnings for worker retiring at age 65 in 2024



Source: Social Security Administration, Actuarial Note 2024.9

CENTER ON BUDGET AND POLICY PRIORITIES | CBPP.ORG

Summary

- **Social Security is an important part of the social safety net.**
- **The OASDI Trust Fund is likely to be exhausted in 2033.**
- **Why are the funds being depleted?**
 - An aging population – fewer paying in and more taking out.
 - Declining birth rates - slowing the growth of the labor force.
 - Wage inequality – more and more wages are above the wage cap.
- **What happens when the funds are depleted?**
 - Benefits may have to be reduced by 18%.
 - The system will continue!
- **Solutions abound. The problem is political will.**
 - The needed changes will be unpopular, but they are very manageable.



58

Thank you!

Any Questions?

www.NEEDecon.org

Jon D. Haveman

Jon@NEEDecon.org

Contact NEED: info@NEEDecon.org

Submit a testimonial: www.NEEDecon.org/testimonials.php

Become a Friend of NEED: www.NEEDecon.org/friend.php



59