



Osher Lifelong Learning Institute, Summer 2022
Contemporary Economic Policy

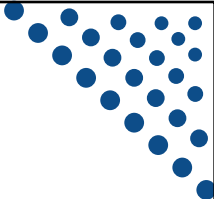
University of Georgia
Aug-Sep, 2022

Jon Haveman, Ph.D.
National Economic Education Delegation

 NATIONAL ECONOMIC EDUCATION DELEGATION


1

1



National Economic Education Delegation

- **Vision**
 - One day, the public discussion of policy issues will be grounded in an accurate perception of the underlying economic principles and data.
- **Mission**
 - NEED unites the skills and knowledge of a vast network of professional economists to promote understanding of the economics of policy issues in the United States.
- **NEED Presentations**
 - Are nonpartisan and intended to reflect the consensus of the economics profession.

 NATIONAL ECONOMIC EDUCATION DELEGATION

2

2

Who Are We?

• Honorary Board: 54 members

- 2 Fed Chairs: Janet Yellen, Ben Bernanke
- 6 Chairs Council of Economic Advisers
 - o Furman (D), Rosen (R), Bernanke (R), Yellen (D), Tyson (D), Goolsbee (D)
- 3 Nobel Prize Winners
 - o Akerlof, Smith, Maskin

• Delegates: 652+ members

- At all levels of academia and some in government service
- All have a Ph.D. in economics
- Crowdsource slide decks
- Give presentations

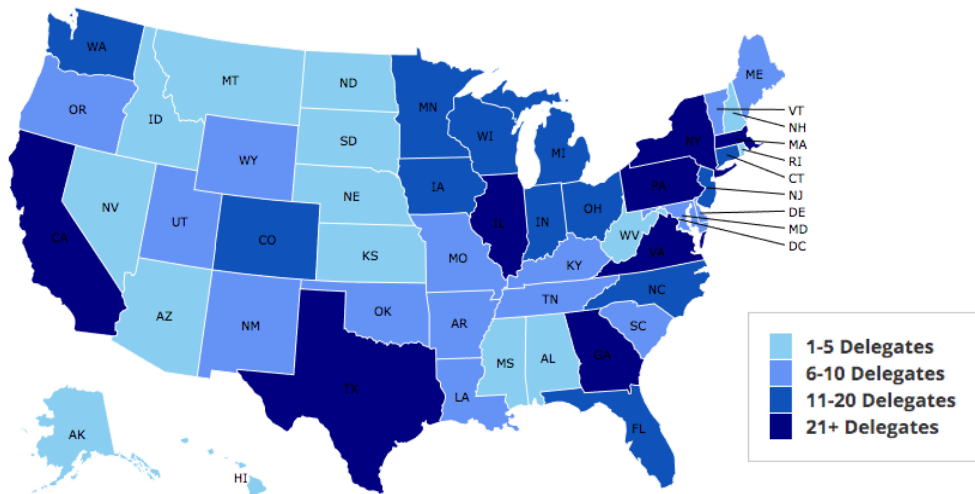
• Global Partners: 49 Ph.D. Economists

- Aid in slide deck development



3

Where Are We?



4

Available NEED Topics Include:

- Healthcare Economics
- US Economy
- Climate Change
- Economic Inequality
- Economic Mobility
- Trade and Globalization
- Minimum Wages
- Immigration Economics
- Housing Policy
- Federal Budgets
- Federal Debt
- Black-White Wealth Gap
- Autonomous Vehicles
- Healthcare Economics



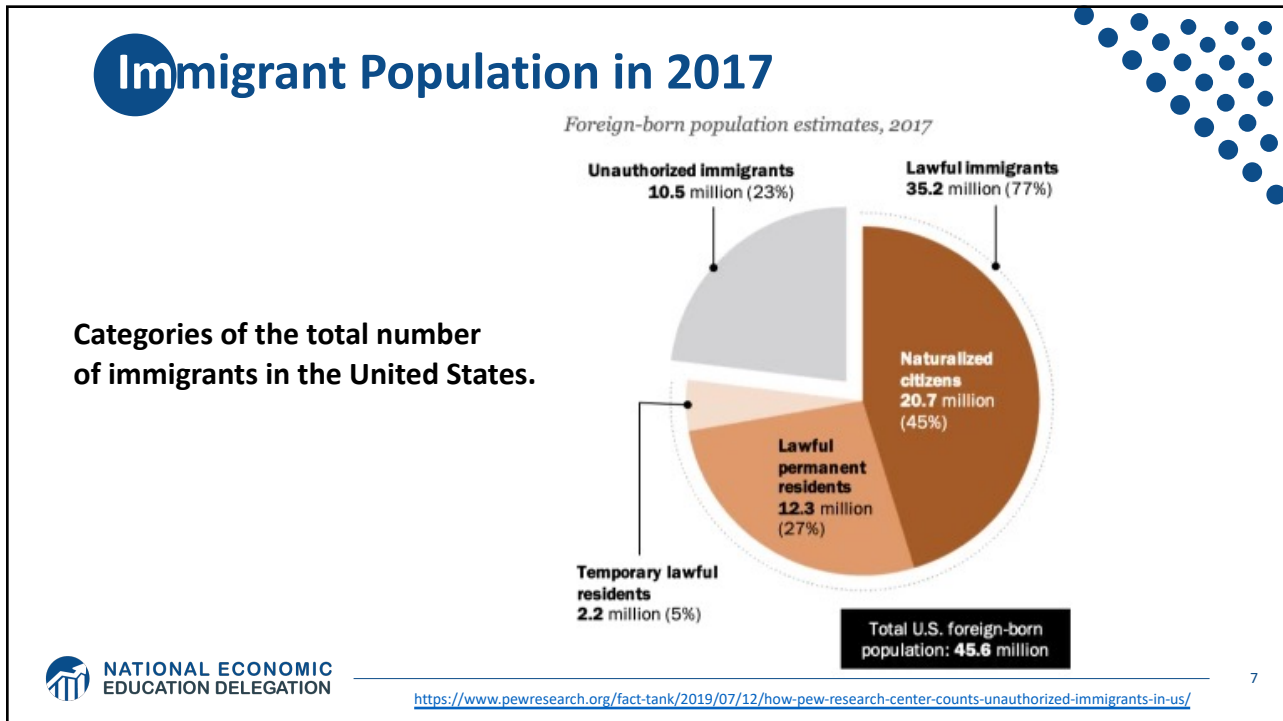
5

Course Outline

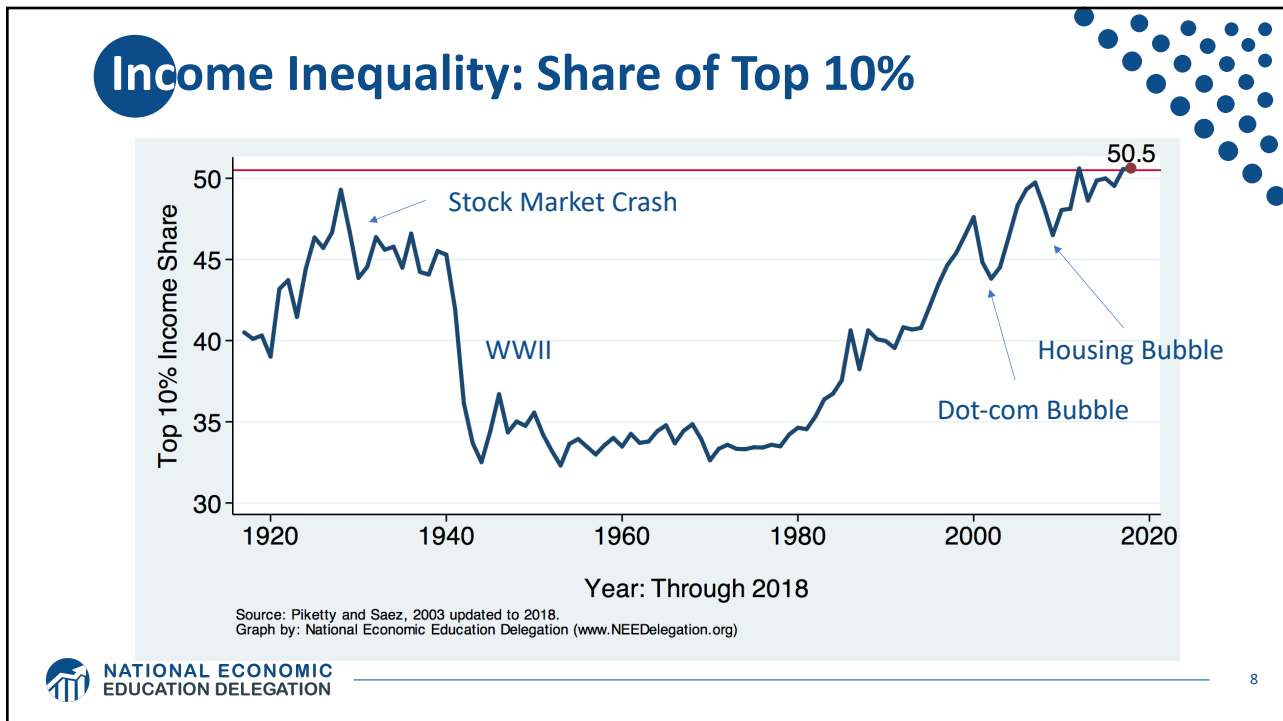
- **Contemporary Economic Policy**
 - **Week 1 (8/23): Climate Change Economics (Sarah Jacobson, Williams College)**
 - Week 2 (8/30): Economics of Immigration (Jennifer Alix-Garcia, Oregon St. Univ.)
 - Week 3 (9/6): Economic Inequality (Kelley Cullen, E. Washington University)
 - Week 4 (9/13): Federal Debt (Brian Peterson, Central College)



6



7

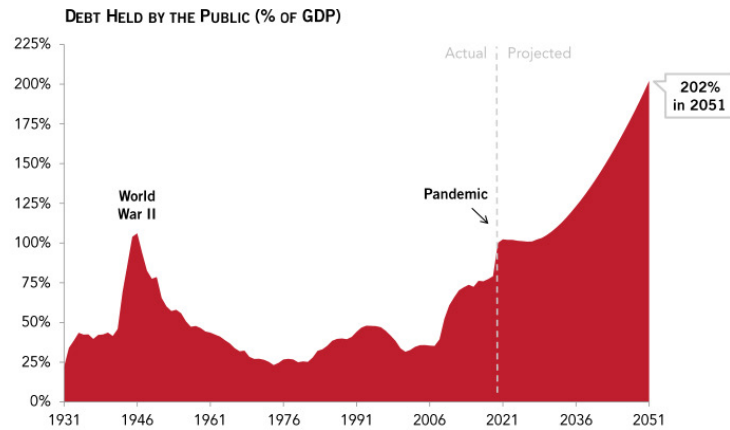


8

The Federal Debt is Becoming A Problem



The national debt is on an unsustainable path



SOURCE: Congressional Budget Office, *The 2021 Long-Term Budget Outlook*, March 2021.
© 2021 Peter G. Peterson Foundation

PGPF.ORG



NATIONAL ECONOMIC
EDUCATION DELEGATION

9

9

Submitting Questions


- **Please submit questions of clarification in the chat.**
 - I will try to handle them as they come up.
- **We will do a verbal Q&A once the material has been presented.**
- **OLLI allowing, we can stay beyond the end of class to have further discussion.**
- **Slides will be available from the NEED website tomorrow (https://needelegation.org/delivered_presentations.php)**



NATIONAL ECONOMIC
EDUCATION DELEGATION

10


10



Climate Change Economics

Sarah Jacobson, Ph.D.
Williams College

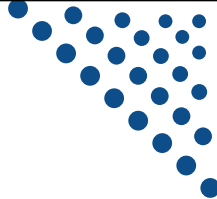
University of Georgia
August 23, 2022




11

Credits and Disclaimer

- **This slide deck was authored by:**
 - Shana McDermott, Trinity University
 - Sarah Jacobson, Williams College
 - Sharon Shewmake, Western Washington University
- **This slide deck was reviewed by:**
 - Jason Shogren, University of Wyoming
 - Walter Thurman, North Carolina State University
- **Disclaimer**
 - NEED presentations are designed to be nonpartisan.
 - It is, however, inevitable that the presenter will be asked for and will provide their own views.
 - Such views are those of the presenter and not necessarily those of the National Economic Education Delegation (NEED).





12

12

Outline

- Economic Building Blocks
- Climate Change
- Impacts of Climate Change
- Reducing Emissions
- Climate Change Policy
- Policy in Action

Economic Building Blocks

How Can Economists Help Fight Climate Change?

- By assessing behavioral reactions to climate change.
- By measuring climate change damages and estimating the costs of fighting climate change.
- By designing smart policies that minimize costs to society.



15

Econ 101: When Everything Is Simple, No Regulation Is Needed for Efficiency

- Simple transactions: buyer and seller feel all costs and benefits of sales
- They choose based on the costs & benefits they feel
- → Efficient number of transactions! (Maximizes social benefits)



16

When Our Decisions Affect Others, We Need Regulation

- Pollution causes an **EXTERNALITY**: a side effect (here, a cost) that affects someone else
 - Polluting things have an “unfair cost advantage” because part of cost is offloaded on others
 - → Too much pollution is generated
 - Regulation limiting pollution has net benefits
- The “*efficient*” amount of pollution balances costs & benefits of pollution



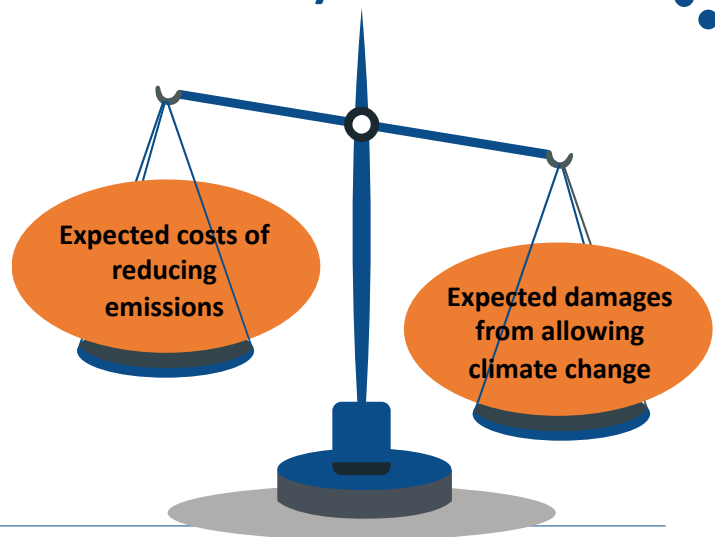
NATIONAL ECONOMIC
EDUCATION DELEGATION

17

How Economists Decide How Much to Fight Climate Change: Cost Benefit Analysis

Abating greenhouse gas emissions is costly...
... but without action, climate change damages are even more costly.

Goal is not zero emissions, but efficient level that achieves a balance.



NATIONAL ECONOMIC
EDUCATION DELEGATION

18

Cost-Benefit Analysis of Fighting Climate Change

- Most economic models suggest the costs of keeping warming below 2°C are relatively small, amounting to **1-4% of GDP by 2030**.
- Costs of acting to keep warming below 2°C are almost certainly less than future economic damages they would avoid.
 - Damages estimated to be between: **7-20% of worldwide GDP**.



NATIONAL ECONOMIC
EDUCATION DELEGATION

19

Climate Change



NATIONAL ECONOMIC
EDUCATION DELEGATION

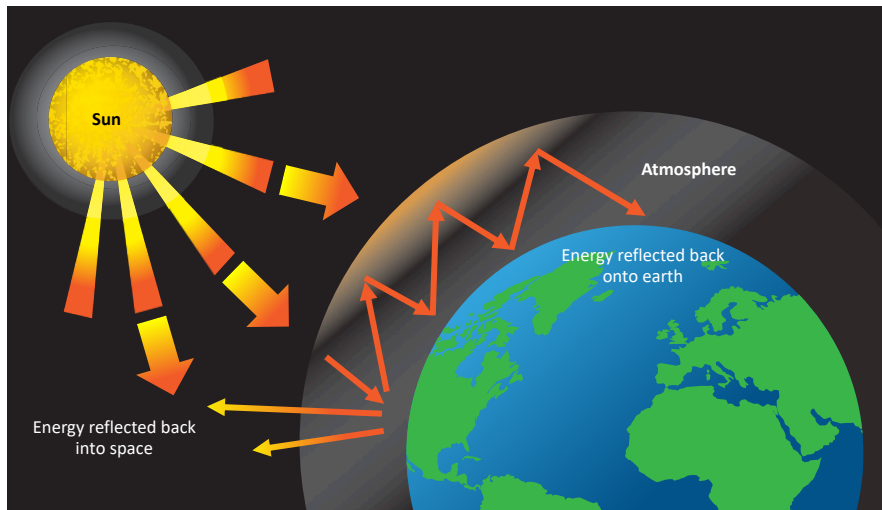
20

A Climate Change Ladder

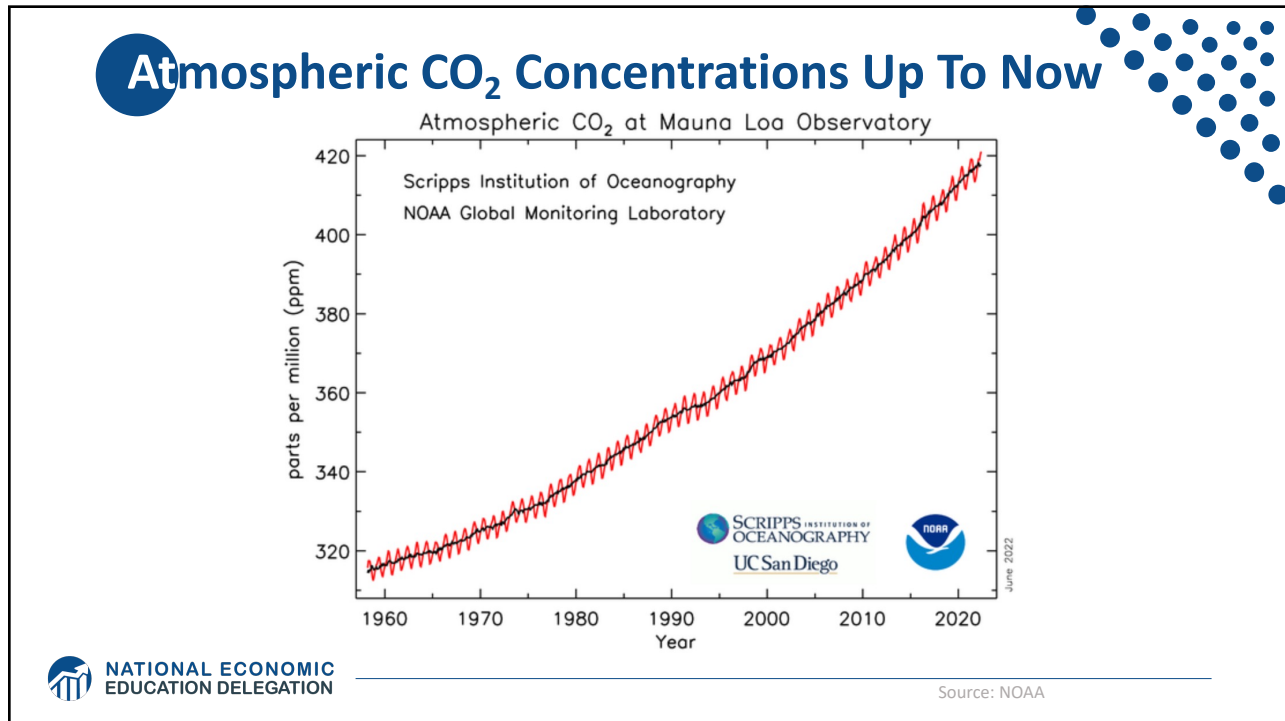
- Emissions
- Mitigation (a.k.a. Abatement)
- Adaptation
- Damages

21

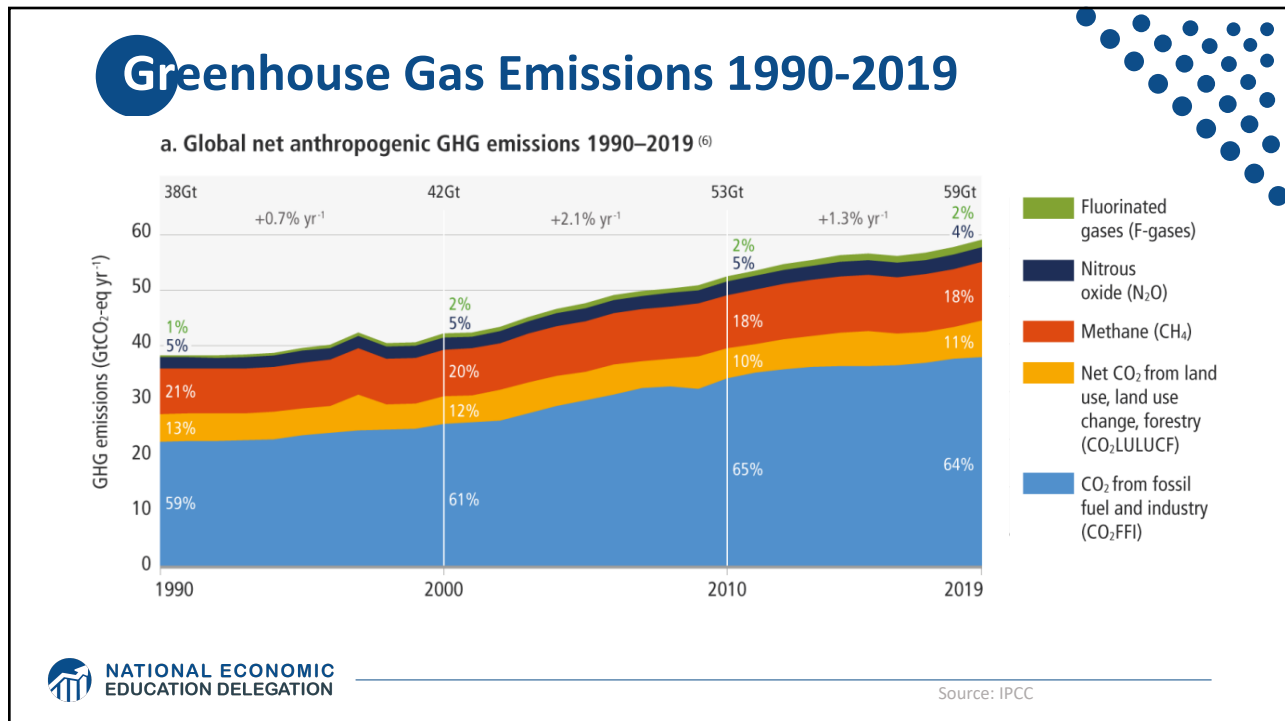
The Atmospheric Greenhouse Effect



22

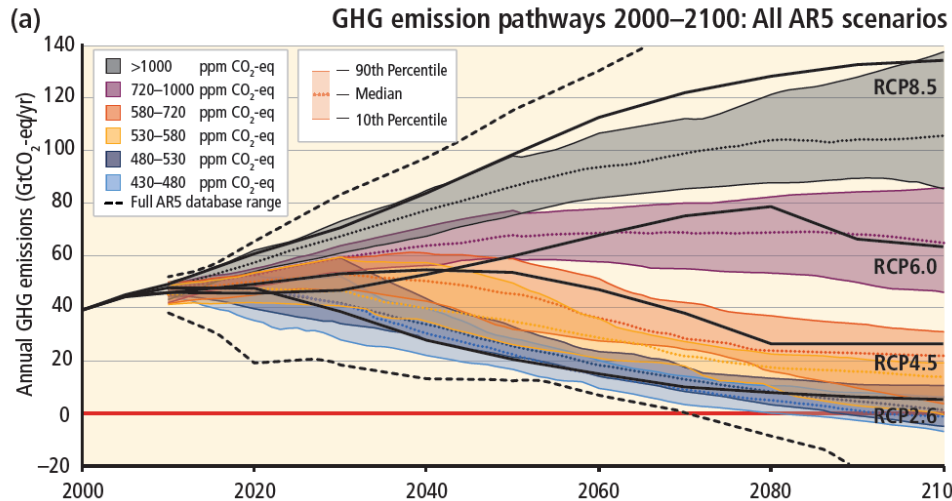


23



24

Emissions Trajectories into the Future



25

What Do Greenhouse Gas Emissions Do to the Planet?

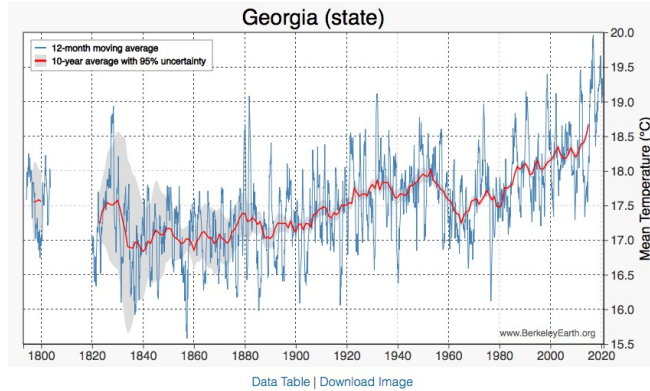
- **Increased temperatures**
 - Sea level rise
 - Storm surges
- **Altered precipitation patterns**
- **More variable weather**
- **More / more powerful storms**
- **Carbon dissolves in ocean**

26

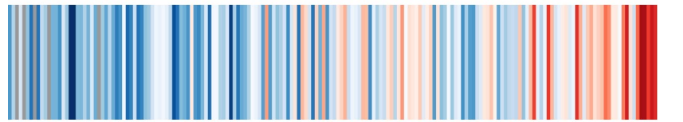
These Changes Are Already Underway

Use <http://berkeleyearth.lbl.gov/city-list/> to see the temperature history of an area!

Here's Georgia.



Climate Stripes



Impacts of Climate Change



How Climate Change Affects Humans

- Agriculture
- Fisheries
- Coastal damages
- Direct health effects, including sickness and death (temperature & drought; also pollution)
- Indirect health effects (vector-borne disease)
- Reduced fresh water availability
- Wildfires
- Shifting zones for important ecosystems, and desertification
- Reduced worker productivity
- Increased violence
- Some of these may cause human migration and/or conflict



NATIONAL ECONOMIC
EDUCATION DELEGATION

29

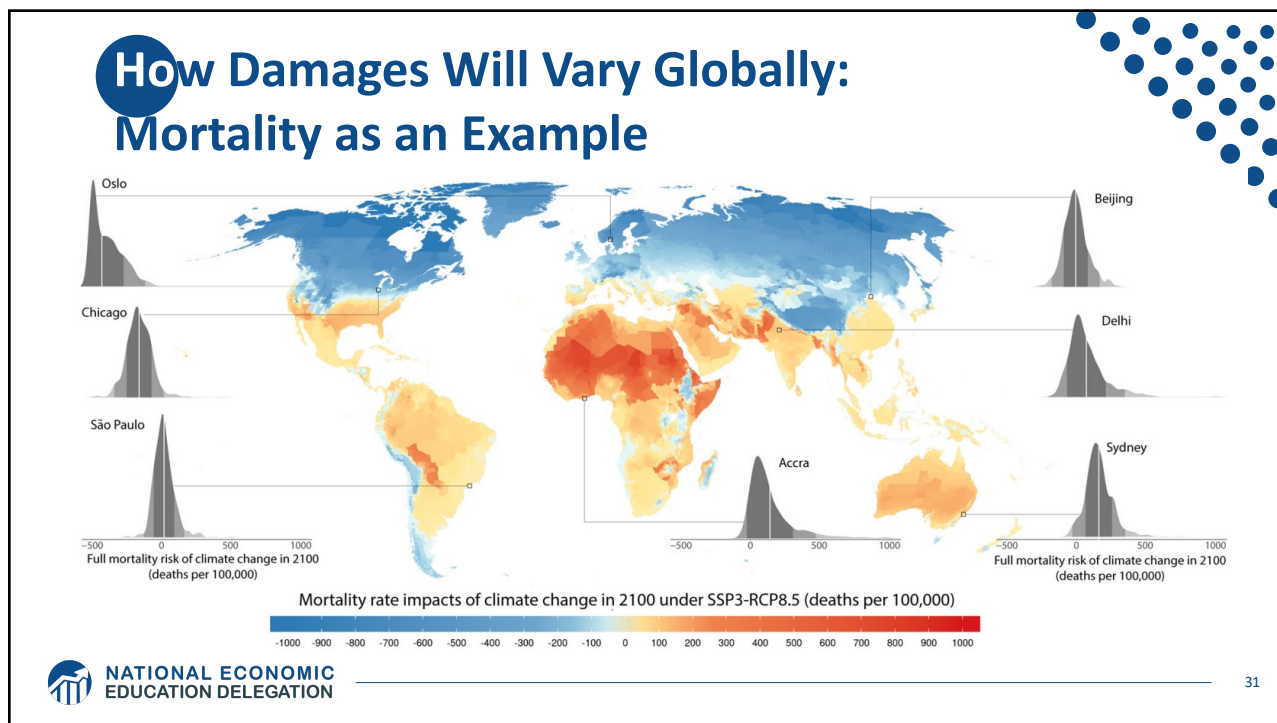
Social Cost of Carbon

- The expected cost of damages from each unit of greenhouse gas emissions.
- Current EPA estimate: ~\$51 per metric ton of CO₂ (but estimates vary a lot!)
 - About \$157/car per year.
 - \$32 Billion for all vehicles in the US.
- Social cost of carbon will increase over time.

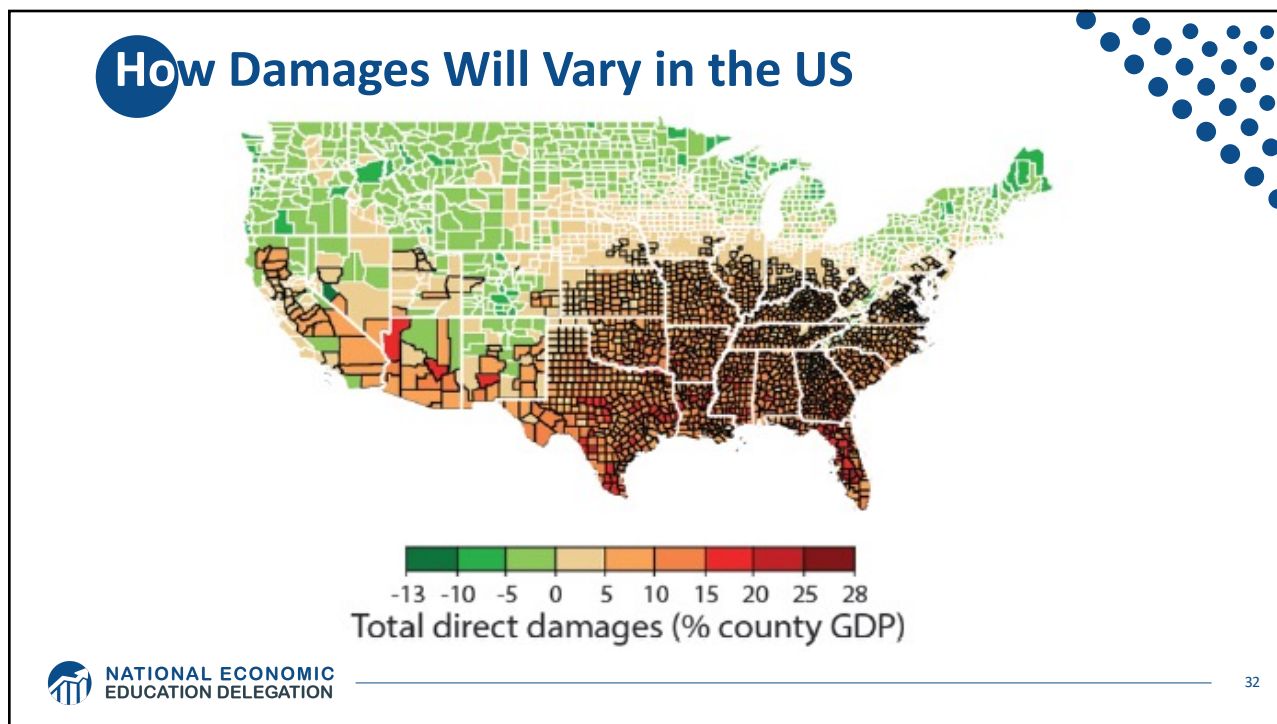


NATIONAL ECONOMIC
EDUCATION DELEGATION

30



31



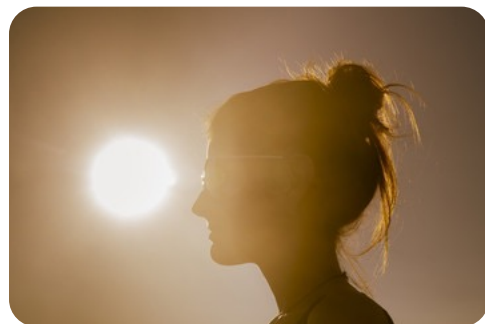
32

Adaptation Reduces Damages

- **Adaptation:** costly action that reduce damages from climate change.
- The **net damage cost to society** is the **cost of adaptation** plus the **cost of remaining damages**.
- People and firms will take some actions on their own, up to the point where they find it worthwhile.
- Some adaptation requires government involvement.

Individual-Level Adaptation

- **Perhaps you...**
 - Stay inside more.
 - Turn on the air conditioning.
- **Farmers may:**
 - Plant at different times.
 - Plant new crops.
- **Businesses may:**
 - Give outdoor workers water / shade breaks.
- **Everyone might:**
 - Think about moving to a safer place.



Public Adaptation

- **Governments can help:**
 - When collective action is less costly than everyone acting alone.
 - When individual action is not possible or likely.
 - When some people can't protect themselves.
- **Sea walls**
- **Ecosystems that provide protection**
- **Policies that protect workers or low-income and vulnerable populations**
- **Planned retreat (moving a community)**



NATIONAL ECONOMIC
EDUCATION DELEGATION

35

Reducing Emissions



NATIONAL ECONOMIC
EDUCATION DELEGATION

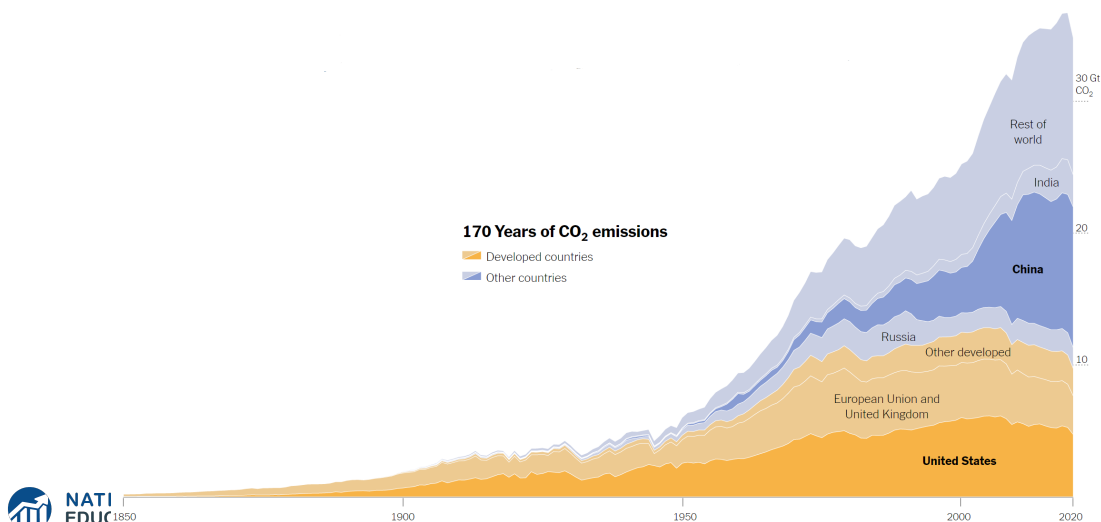
36

Global Net Emissions Are What We Care About

- **For climate impacts, we don't care where they are emitted, only how much**
 - There may be other local impacts
- **Gross emissions (greenhouse gas sources): how much greenhouse gases (including CO₂) we put out**
- **Greenhouse gas sinks: ways to pull CO₂ out of the air**
 - Existing: oceans, forests
 - Increase sinkage by planting trees, or other measures

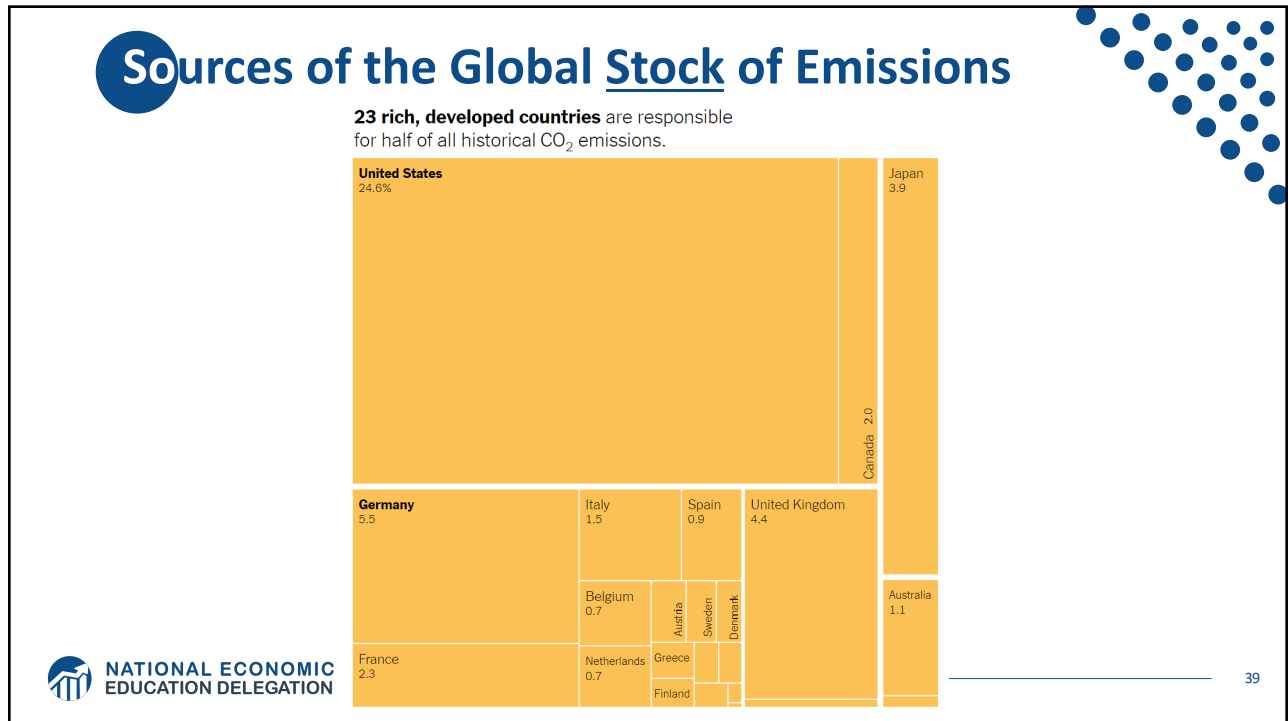
37

Sources of the Global Flow of Emissions

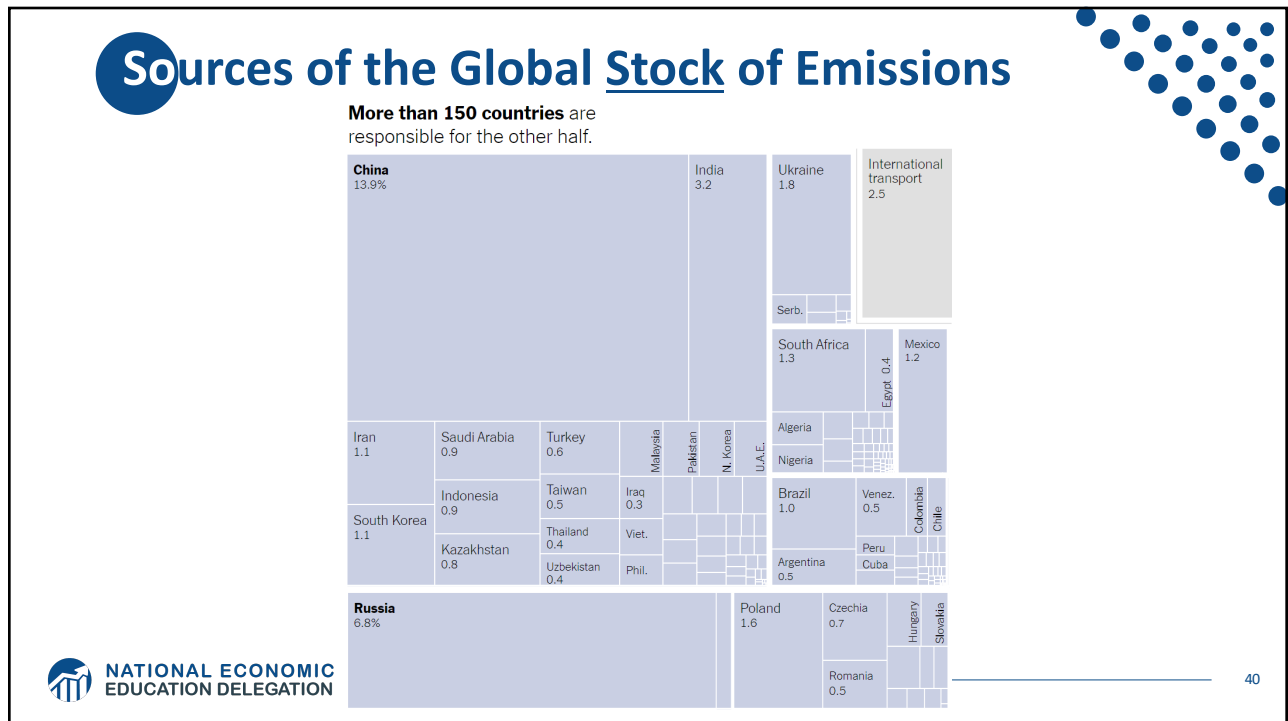


38

38



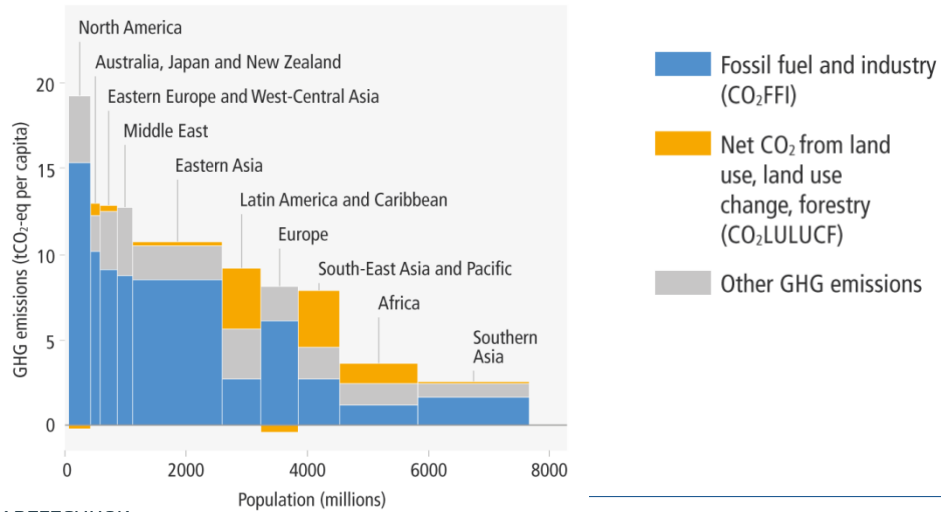
39



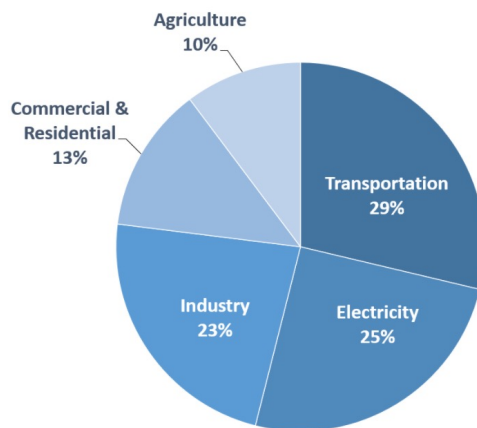
40

How Does This Look Per Capita (Per Person)?

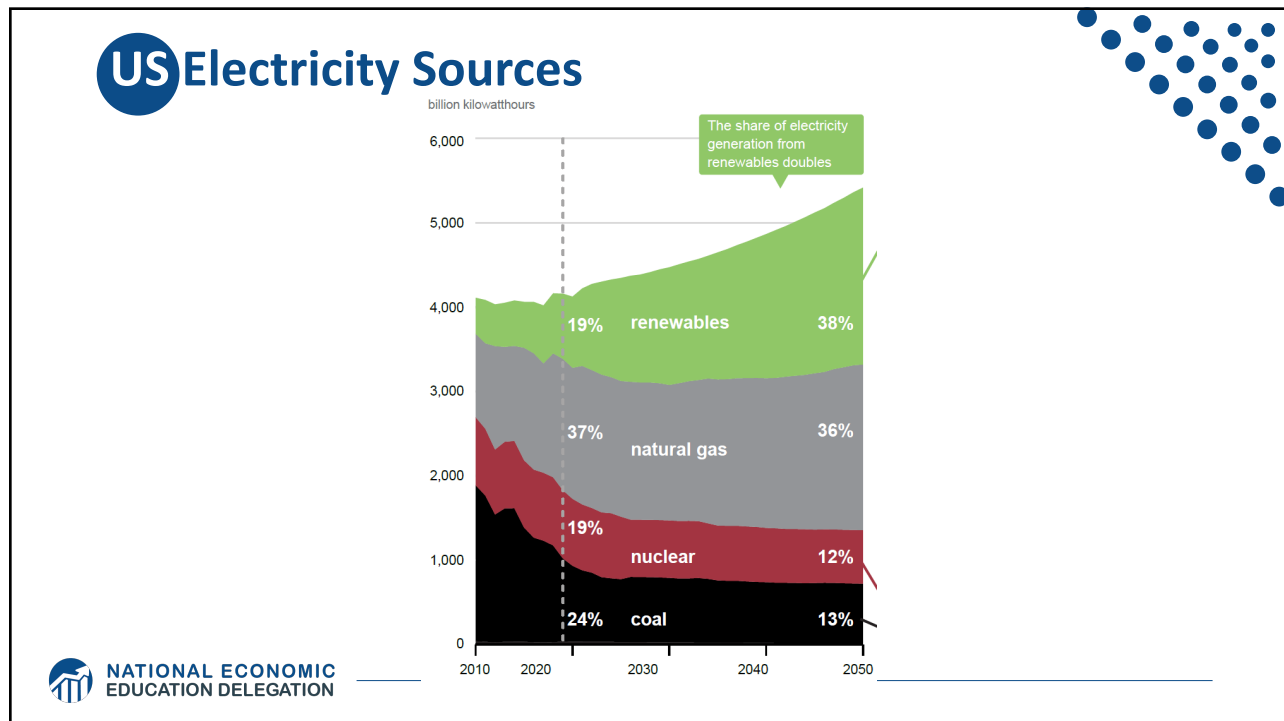
c. Net anthropogenic GHG emissions per capita and for total population, per region (2019)



Total US Greenhouse Gas Emissions by Economic Sector in 2020



Total Emissions in 2019 = 6,558 Million Metric Tons of CO₂ equivalent. Percentages may not add up to 100% due to independent rounding.



43

Which Emissions Should We Cut?

- List all possible ways to reduce emissions
- Figure out how much each can reduce in total
- Figure out how much each costs per unit of emissions reduced
- Line them up in order: cheapest to costliest (“marginal abatement cost curve”)
 - → Tackle first the cheapest ones!

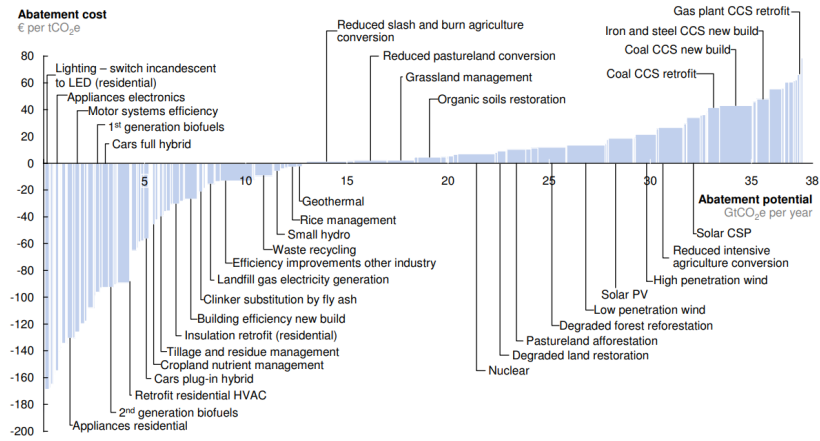
NATIONAL ECONOMIC EDUCATION DELEGATION

44

Example Abatement Cost Curve

(Don't trust these numbers, this is just to show the idea)

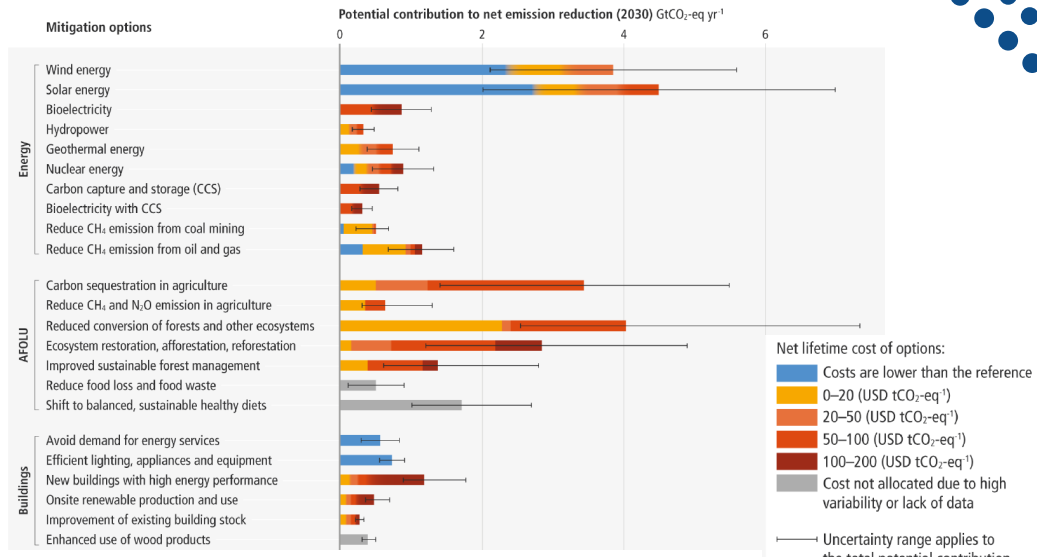
V2.1 Global GHG abatement cost curve beyond BAU – 2030



Note: The curve presents an estimate of the maximum potential of all technical GHG abatement measures below €80 per tCO₂e if each lever was pursued aggressively. It is not a forecast of what role different abatement measures and technologies will play.
Source: Global GHG Abatement Cost Curve v2.1

45

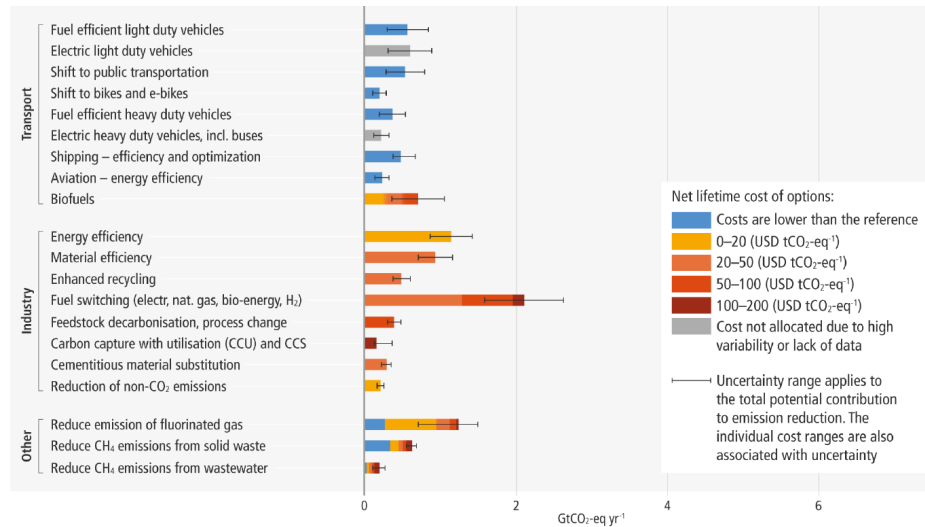
Newer Estimated Abatement Cost Curve



NATIONAL ECONOMIC EDUCATION DELEGATION

46

Newer Estimated Abatement Cost Curve



47

Costs and Barriers Can Be Difficult to Assess

- **Difficult to project future costs for new technology**
 - Costs of renewables have been dropping fast
- **Investments in research and development and infrastructure (e.g., EV charging) can lower future costs**
- **Barrier to expanding renewable energy: intermittency**
 - Battery technology under development

48

Geoengineering and Carbon Capture

- **Technical pathways to reduce climate change without reducing emissions**
- **Carbon capture: captures CO2 emissions and stores them or “utilizes” them (for energy, pressure, etc.)**
 - Not yet proven at scale
- **Solar geoengineering: make the atmosphere reflect more light to regain earlier thermal balance**
 - Totally theoretical
 - Potentially risky

Climate Change Policy

Policies That Reduce Emissions Directly

- **Command and control regulation**
 - Emissions standards or limits (e.g., Clean Water Act discharge limits)
 - Tech standards (e.g., require scrubbers on power plants)
- **Incentive-based policies**
 - Putting a price on emissions – leveling the playing field!
 - Tax or cap & trade
 - Subsidizing green energy (e.g., feed-in tariffs)



51

Command and Control vs. Incentive-Based Regulation

- **Efficiency**
 - Both can achieve the same amount of emissions reduction.
 - Incentive-based policies can achieve emissions reduction at much lower cost.
- **Equity**
 - Both have may regressive impacts (low-income families bear costs that are a larger percent of their incomes vs hi-income families)
 - However, new evidence increasingly questions this.
 - Cap and trade and carbon tax can generate revenues that can be used to offset the regressivity.
 - E.g.: “carbon dividend”
 - Command and control regulations do not.



52

How Does a Carbon Tax Work?

- **Choose activities to be covered (e.g., electricity sector, all emitters, etc.).**
- **Set tax level.**
 - Optimally, it represents the social cost of polluting.
- **Polluters must pay a tax for every unit emitted.**
 - Polluters with **low** abatement costs will **abate** to avoid the tax
 - Polluters with **high** abatement costs will pollute and **pay the tax**

53

How Does Cap and Trade Work?

- **Choose activities to be covered (e.g., electricity sector, all emitters, etc.).**
- **Set maximum emissions level (“cap”).**
- **That many pollution permits are issued.**
 - Can be auctioned off or given to polluters
- **Every polluter in a covered sector must have a permit for every unit of pollution.**
- **Polluters buy and sell (“trade”) permits on a market as they wish.**
 - Polluters with **low** abatement costs will make / save money by **abating** and selling / not buying permits
 - Polluters with **high** abatement costs will buy permits and **pollute**

54

Examples of Other Policies that Reduce Emissions

- Research and development subsidies
- Renewable energy mandates (e.g., renewable portfolio standards)
- Energy efficiency mandates and subsidies (e.g. CAFE fuel economy standards)
- Grid / infrastructure improvements
- Public transportation
- Land use / zoning policies



NATIONAL ECONOMIC
EDUCATION DELEGATION

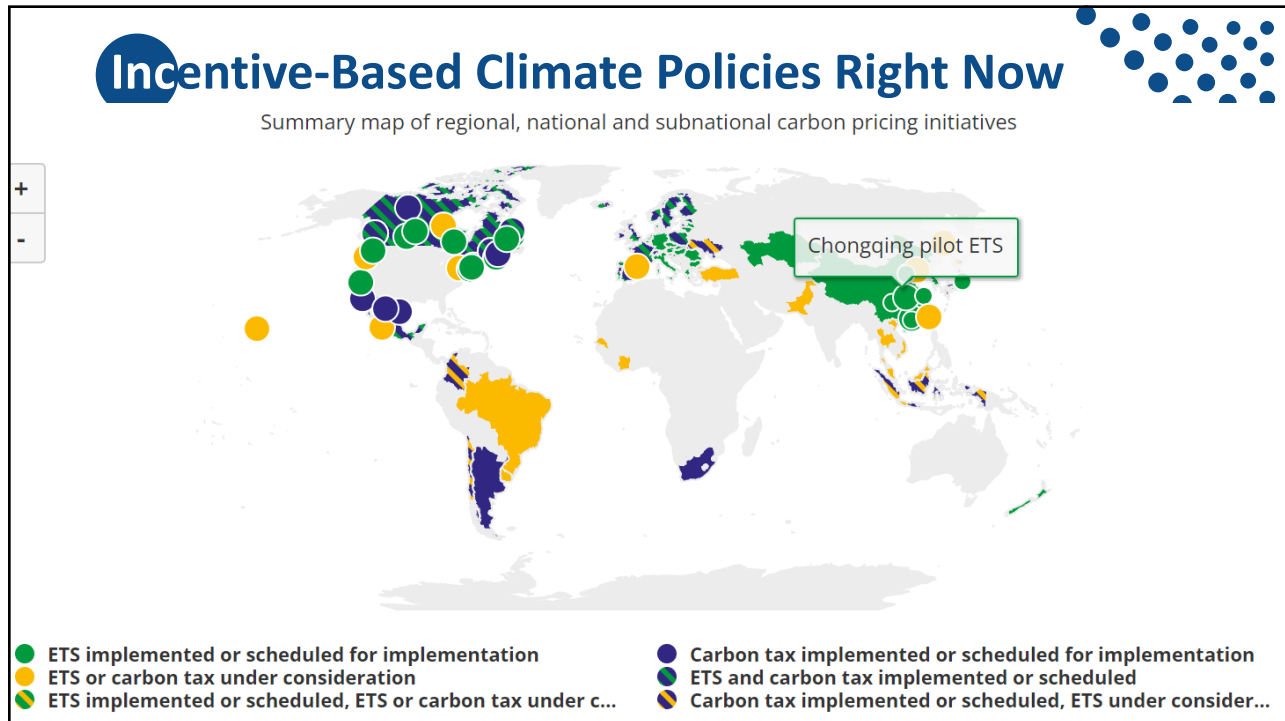
55

Climate Change Policy in Action

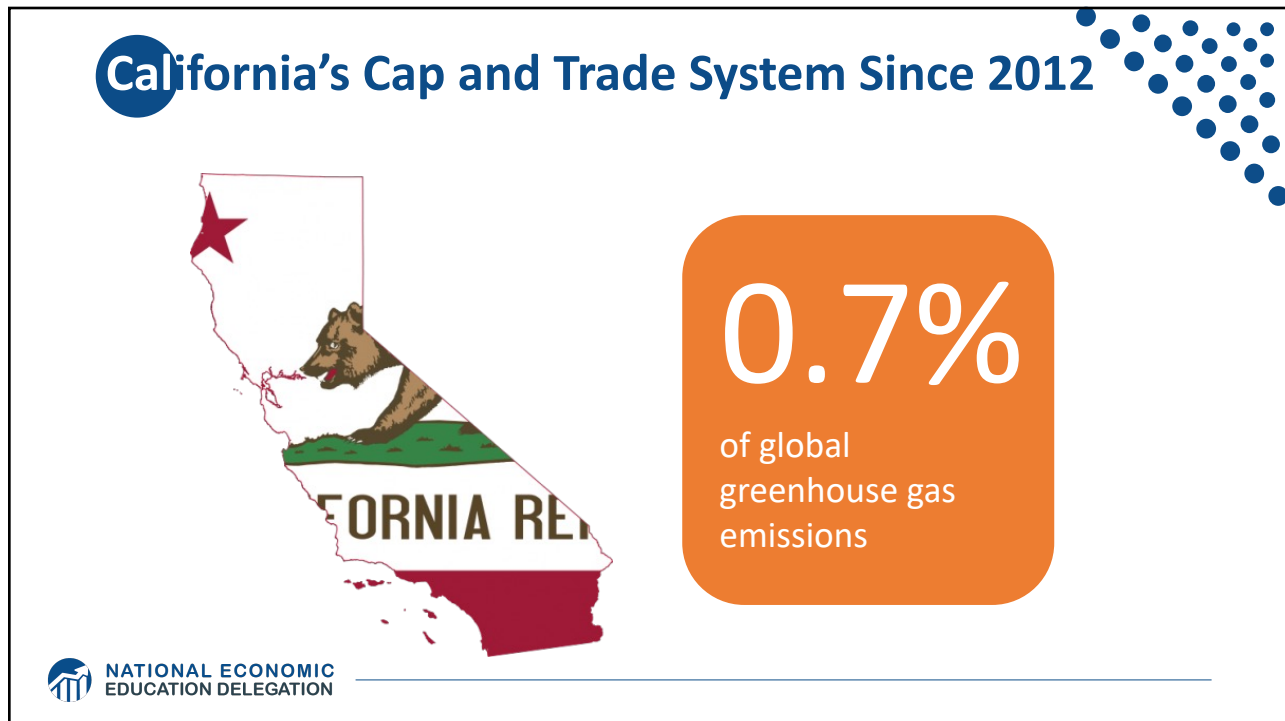


NATIONAL ECONOMIC
EDUCATION DELEGATION

56



57



58

California's AB32: Global Warming Solutions

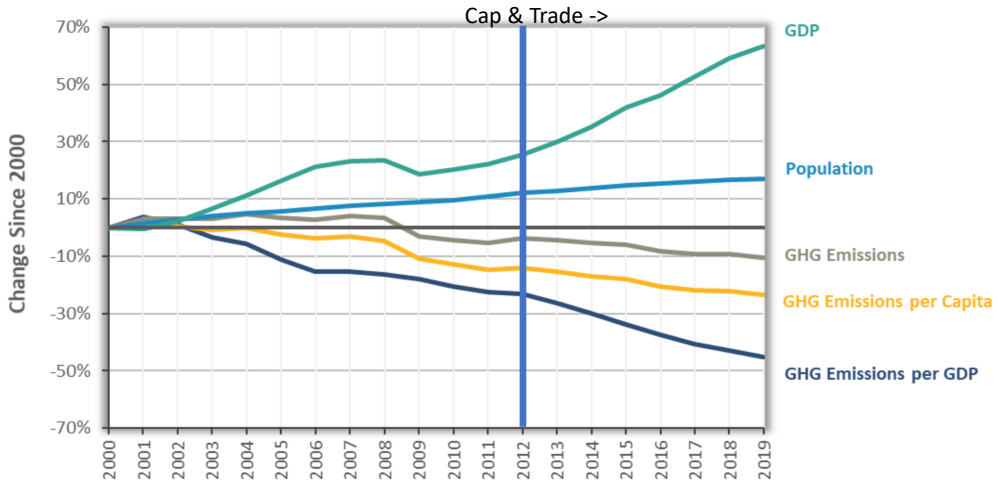


- **California's goals:**
 - Reduce emissions to 1990 levels by 2020
 - An 80% reduction in emissions from 1990 levels by 2030
- **California's Tools:**
 - Cap and Trade
 - Renewable Portfolio Standard
 - Clean Cars Program
 - Low Carbon Fuel Standard


 NATIONAL ECONOMIC EDUCATION DELEGATION

59

Change in California GDP, Population, and GHG Emissions since 2000

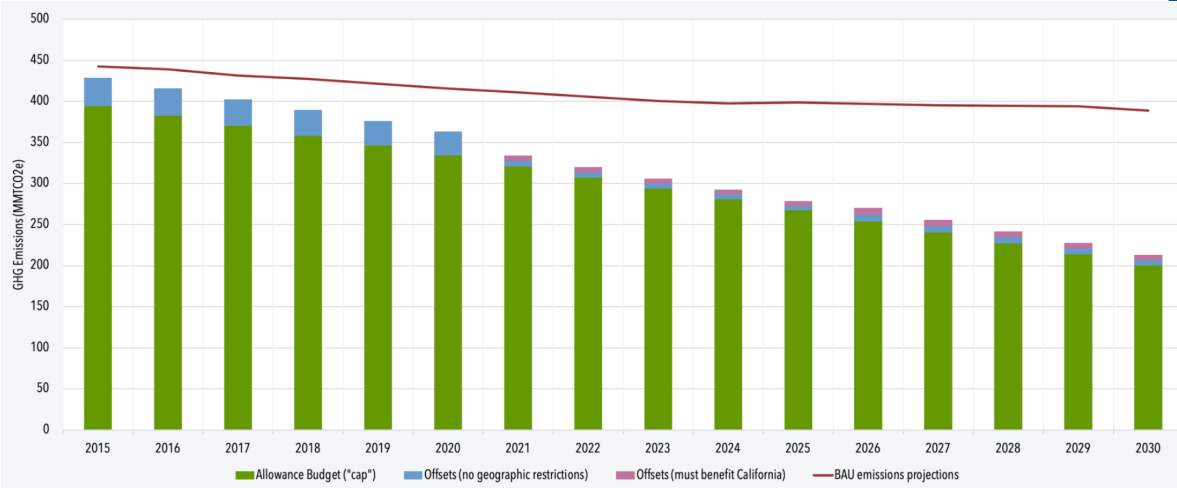


Year	GDP (%)	Population (%)	GHG Emissions (%)	GHG Emissions per Capita (%)	GHG Emissions per GDP (%)
2000	0	0	0	0	0
2001	2	1	1	1	0
2002	4	2	2	2	-1
2003	6	3	3	3	-2
2004	8	4	4	4	-3
2005	10	5	5	5	-4
2006	12	6	6	6	-5
2007	14	7	7	7	-6
2008	16	8	8	8	-7
2009	15	9	7	7	-8
2010	16	10	6	6	-9
2011	17	11	5	5	-10
2012	18	12	4	4	-11
2013	20	13	3	3	-12
2014	22	14	2	2	-13
2015	24	15	1	1	-14
2016	26	16	0	0	-15
2017	28	17	-1	-1	-16
2018	30	18	-2	-2	-17
2019	32	19	-3	-3	-18

 NATIONAL ECONOMIC EDUCATION DELEGATION

60

Projected trends in California's emissions



NATIONAL ECONOMIC
EDUCATION DELEGATION

61

61

Summary

- **Climate change is real, is caused by human actions, and has impacts we're already feeling.**
- **This problem won't solve itself; we need policy intervention, and fast.**
- **Smart policy can reduce greenhouse gas emissions by the right amount and at the lowest possible cost.**
 - For example, cap and trade and emissions taxes!
- **We also need policies to help with adaptation and support those bearing the greatest damages.**



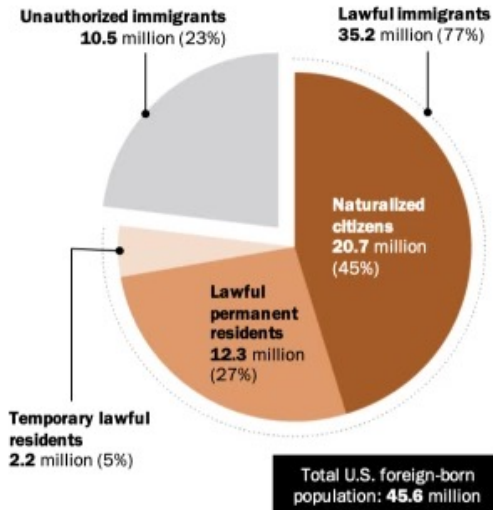
NATIONAL ECONOMIC
EDUCATION DELEGATION

62

Immigrant: Jennifer Alix-Garcia

Foreign-born population estimates, 2017

Categories of the total number of immigrants in the United States.



<https://www.pewresearch.org/fact-tank/2019/07/12/how-pew-research-center-counts-unauthorized-immigrants-in-us/>

Thank you!

Any Questions?

www.NEEDelegation.org

Sarah Jacobson, Ph.D.

saj2@williams.edu

Contact NEED: info@NEEDelegation.org

Submit a testimonial: www.NEEDelegation.org/testimonials.php

Become a Friend of NEED: www.NEEDelegation.org/friend.php

