



COVID-19: Economic Implications and Policy Response

Int'l Right of Way Association
April 8, 2020



1

National Economic Education Delegation

- **Vision**

- One day, the public discussion of policy issues will be grounded in an accurate perception of the underlying economic principles and data.

- **Mission**

- NEED unites the skills and knowledge of a vast network of professional economists to promote understanding of the economics of policy issues in the United States

- **NEED Presentations**

- Are **nonpartisan** and intended to reflect the consensus of the economics profession

2

Who Are We?

- **Honorary Board: 47 members**

- 2 Fed Chairs: Janet Yellen, Ben Bernanke
- 6 Chairs Council of Economic Advisers
 - o Furman (D), Rosen (R), Bernanke (R), Yellen (D), Tyson (D), Goolsbee (D)
- 3 Nobel Prize Winners
 - o Akerlof, Smith, Maskin

- **Delegates: 500+ members**

- At all levels of academia and some in government service
- All have a Ph.D. in economics
- Crowdsource slide decks
- Give presentations

- **Global Partners: 45 Ph.D. Economists**

- Aid in slide deck development



NATIONAL ECONOMIC
EDUCATION DELEGATION

3

3

Available NEED Topics Include:

- **US Economy**
- **Climate Change**
- **Economic Inequality**
- **Economic Mobility**
- **US Social Policy**
- **Trade and Globalization**
- **Trade Wars**
- **Immigration Economics**
- **Housing Policy**
- **Federal Budgets**
- **Federal Debt**
- **2017 Tax Law**
- **Autonomous Vehicles**



NATIONAL ECONOMIC
EDUCATION DELEGATION

4

4

Credits and Disclaimer

- **This slide deck was authored by:**

- Jon D. Haveman, NEED
- Scott Baier, Clemson University

- **Disclaimer**

- NEED presentations are designed to be nonpartisan.
- It is, however, inevitable that the presenter will be asked for and will provide their own views.
- Such views are those of the presenter and not necessarily those of the National Economic Education Delegation (NEED).



5

Outline

- **What is this?**
- **What does economics offer?**
- **Economic implications**
- **Vulnerabilities**
- **Evidence**
- **Policy**



6

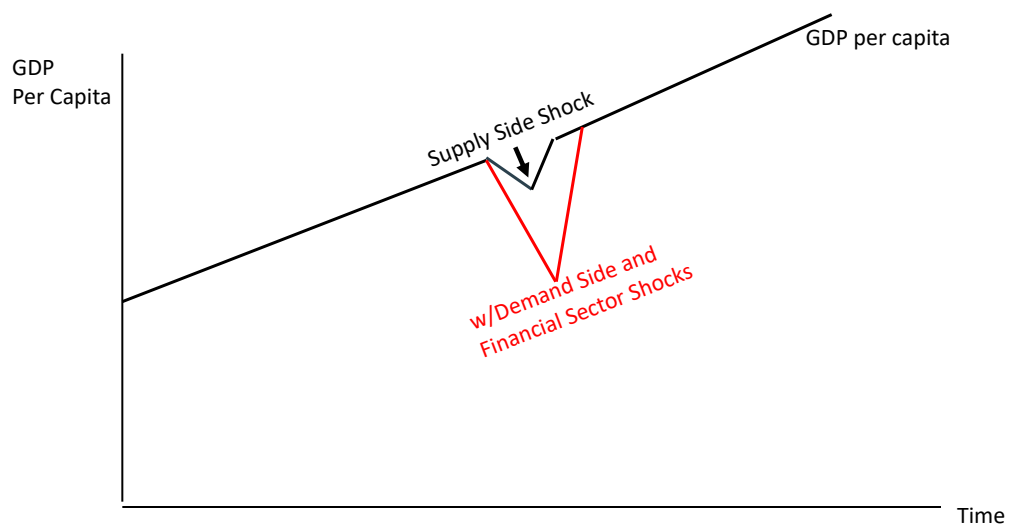
What is This?

- **A health crisis with enormous economic implications.**
- **It is:**
 - A perfect storm of economic difficulty
 - Supply side
 - Demand side
 - Financial
 - Without a culprit



7

Impact on GDP of COVID-19 – No Social Distancing

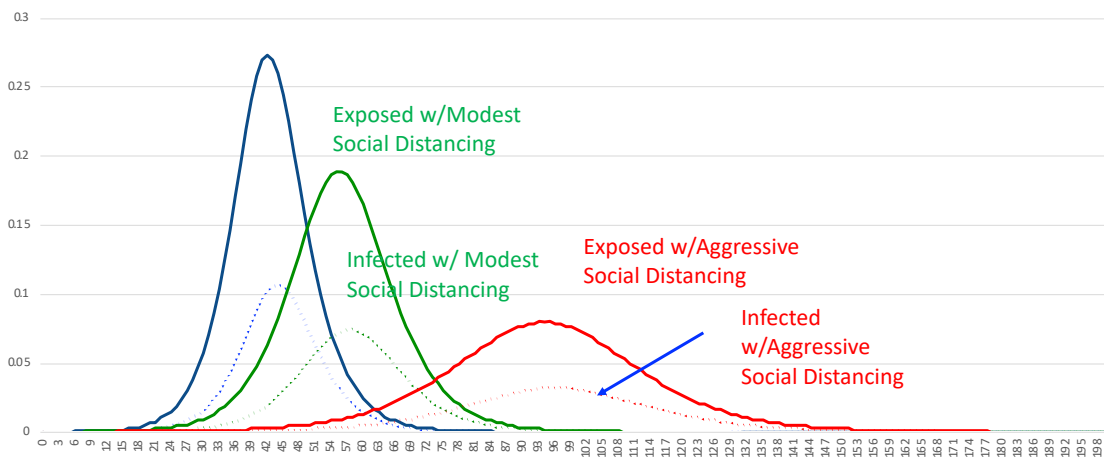


8

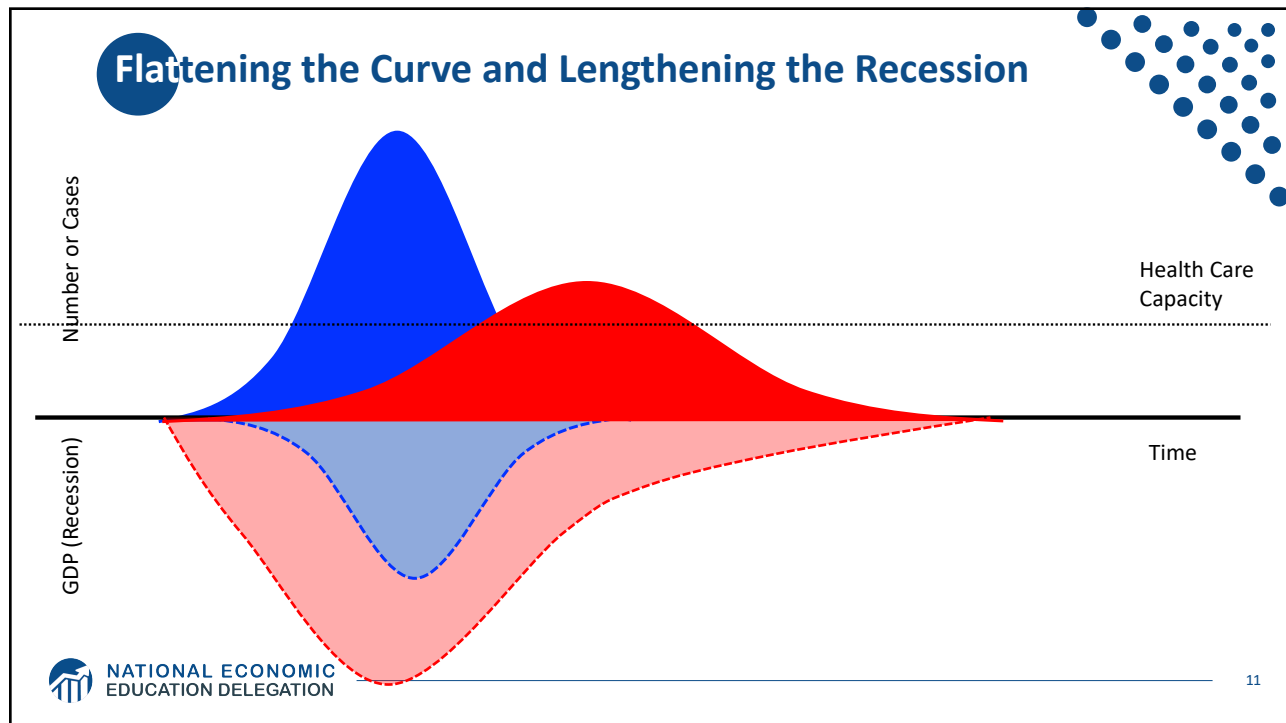
Social Policy

9

Exposed and Infected and Social Distance



10



11

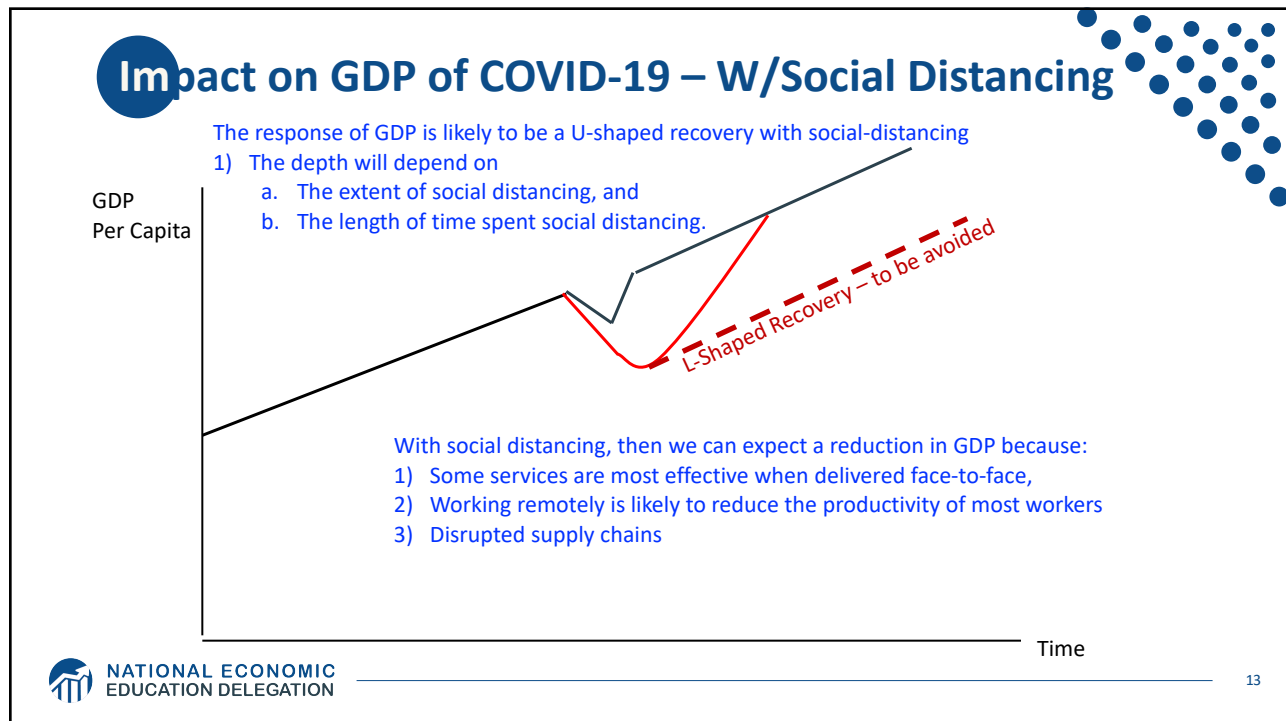
Potential Economic Costs of Shutdown

- **Unemployment**
 - About one-quarter of workers are affected by stay-at-home orders.
 - Unemployment on this scale has not been seen since the Great Depression.
- **Cascading bankruptcies of small and large businesses.**
 - Businesses face revenue shortfall and are unable to pay their fixed costs and service debt.
- **Long term: disruption from previous growth path.**
 - Perhaps permanent.

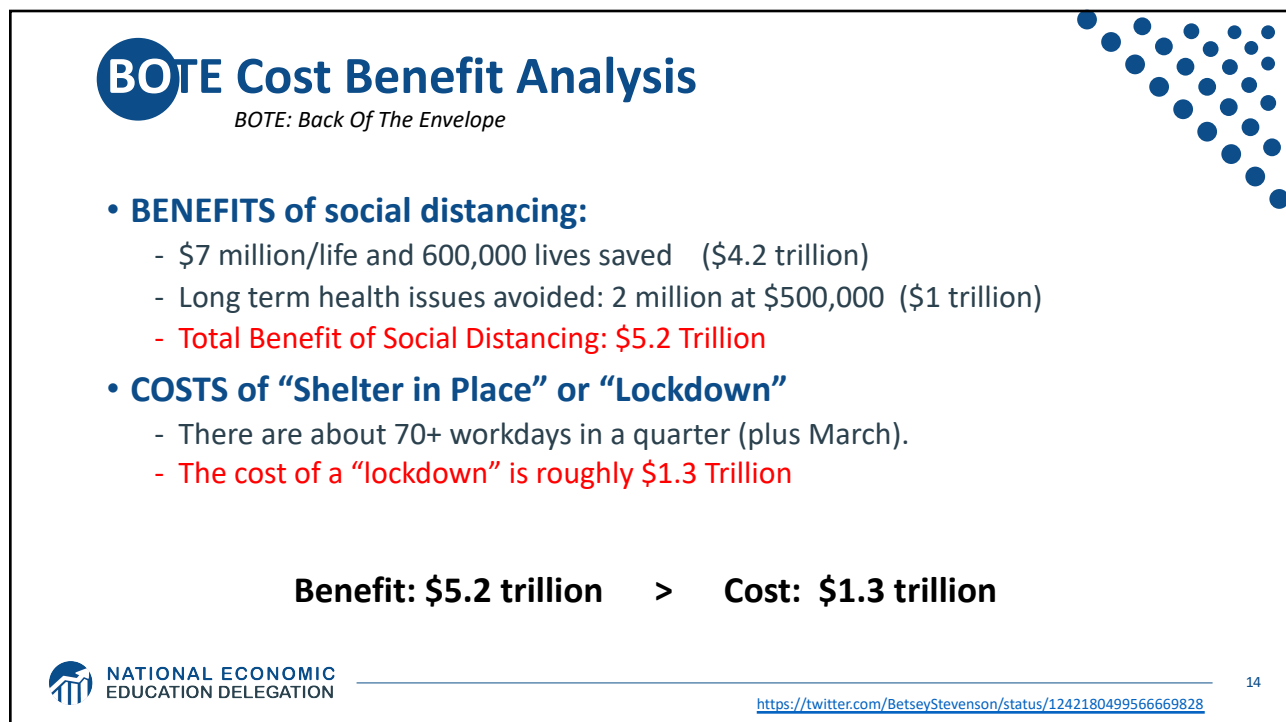
NATIONAL ECONOMIC EDUCATION DELEGATION

12

12



13



14

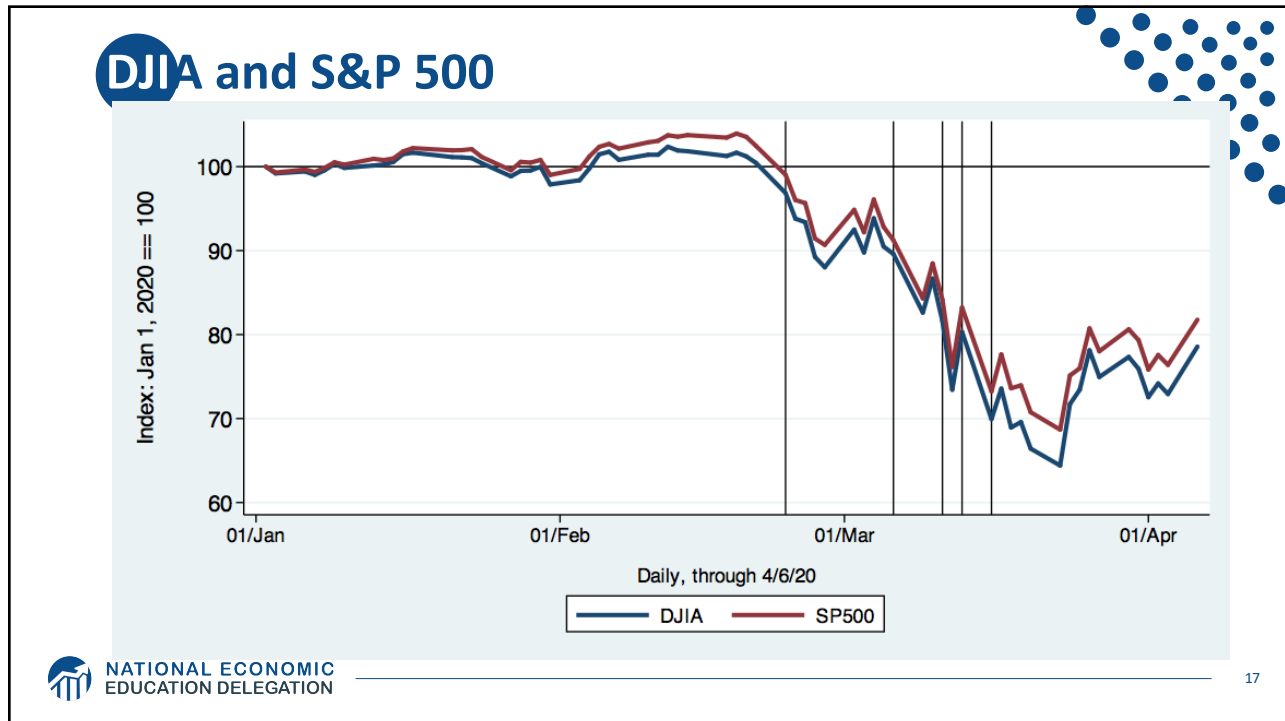
Depth and Duration

15

The Escalation of the Economic Effects



16



17

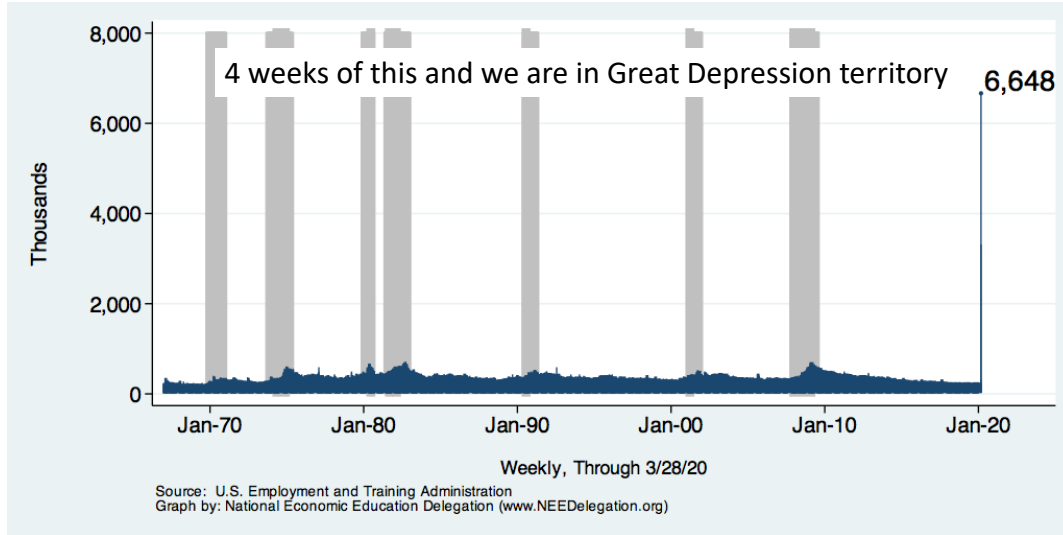
Particularly Vulnerable Industries

Industry	Share of GDP
Arts, entertainment, and recreation	1.1
Management of companies and enterprises	1.9
Other services, except government	2.1
Accommodation and food services	3.1
Transportation and warehousing	3.2
Retail trade	5.5
Educational services, health care, and social assistance	8.7
Manufacturing	11.3
Real estate and rental and leasing	13.3
Total	50.2

NATIONAL ECONOMIC EDUCATION DELEGATION

18

Weekly New Unemployment Claims

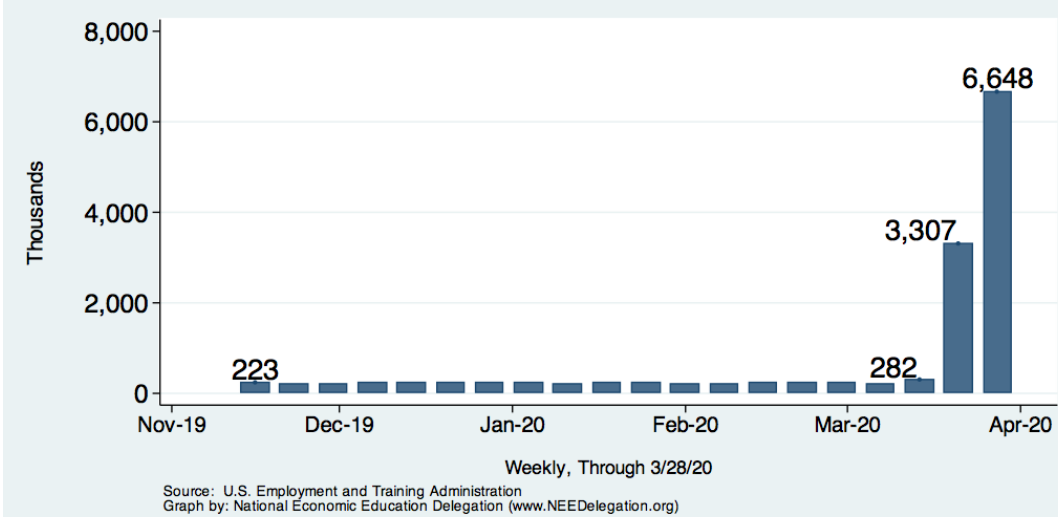


NATIONAL ECONOMIC
EDUCATION DELEGATION

19

19

Weekly New Unemployment Claims

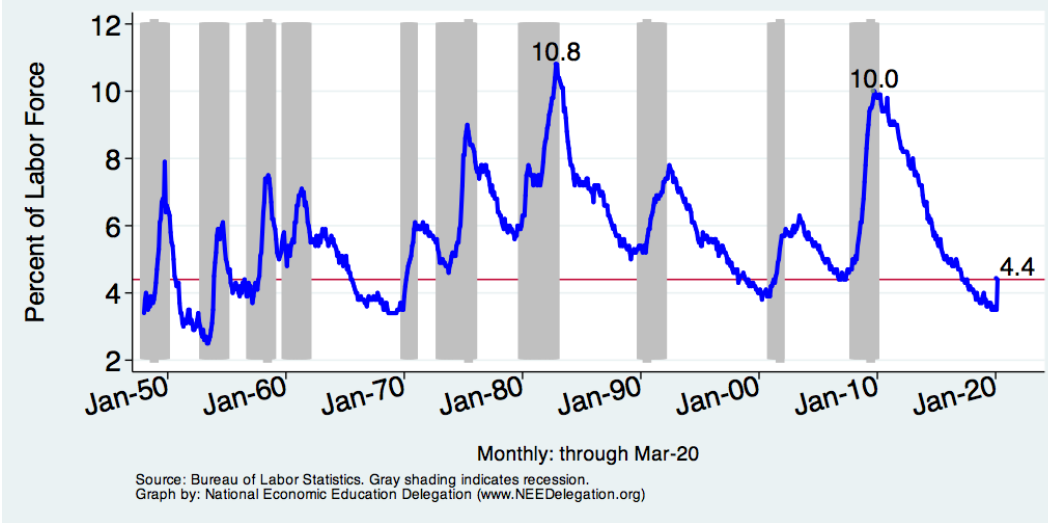


NATIONAL ECONOMIC
EDUCATION DELEGATION

20

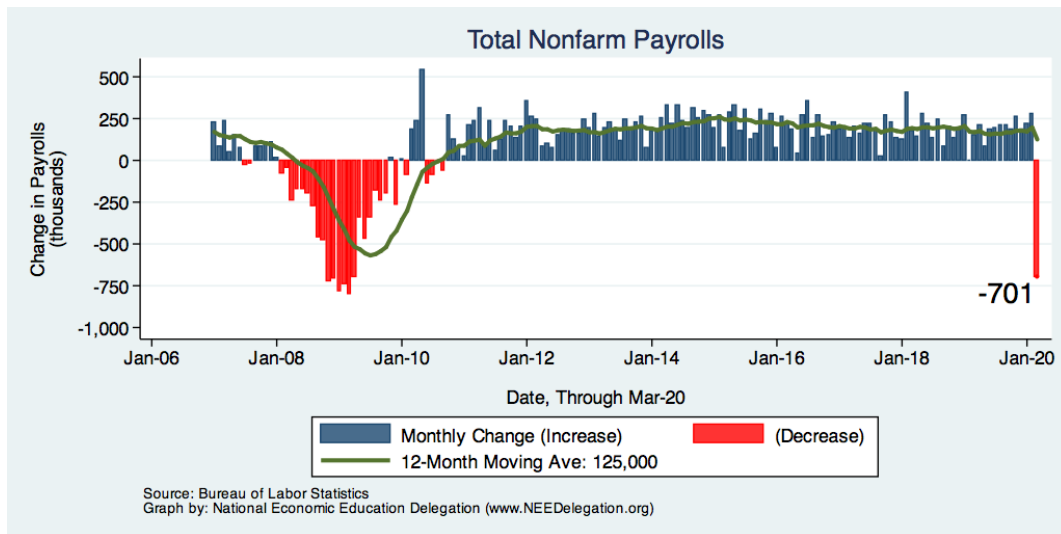
20

Unemployment Rate



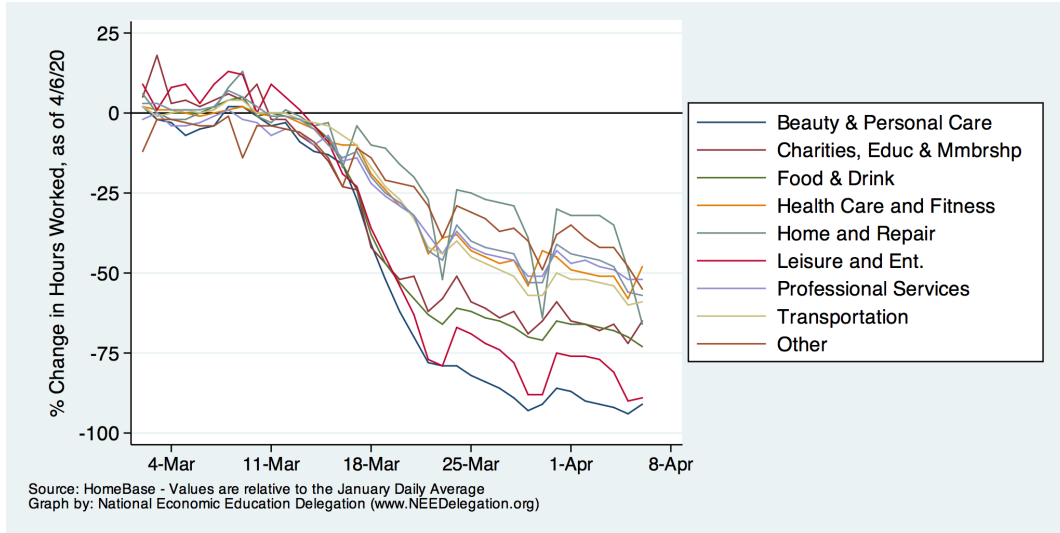
21

Monthly Changes in Nonfarm Employment



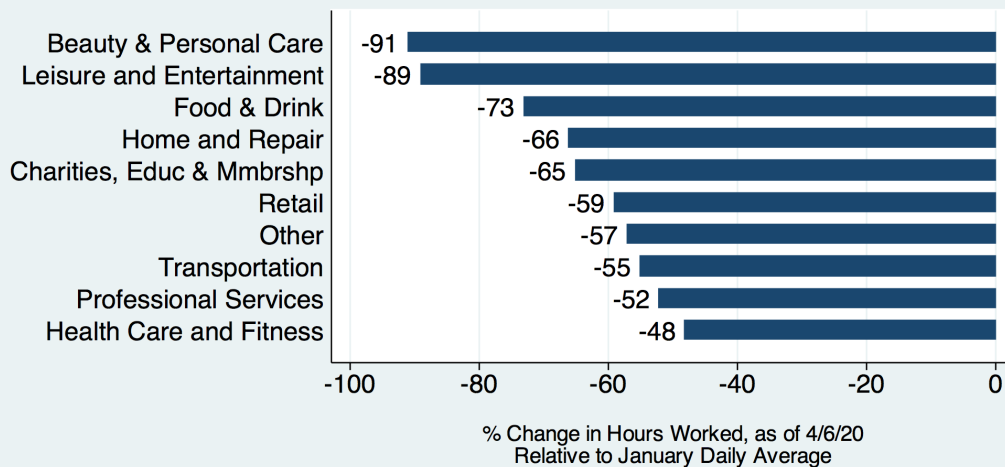
22

Percent Change Hours Worked

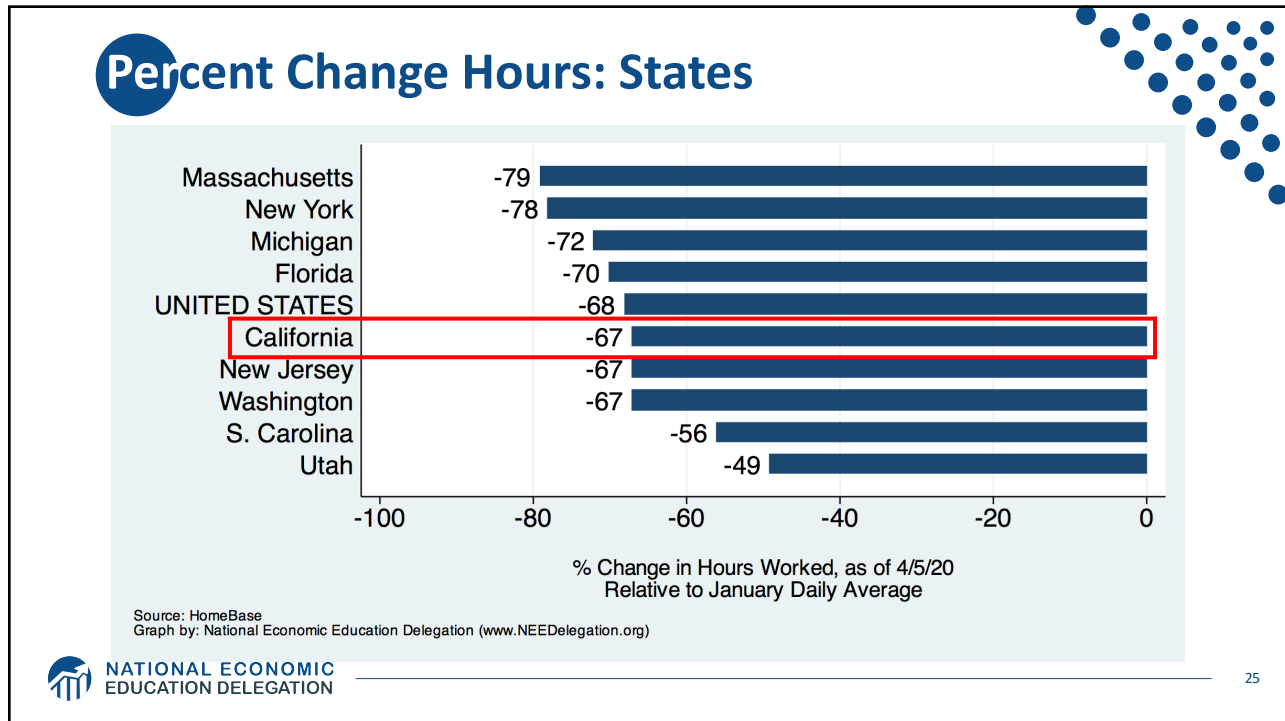


23

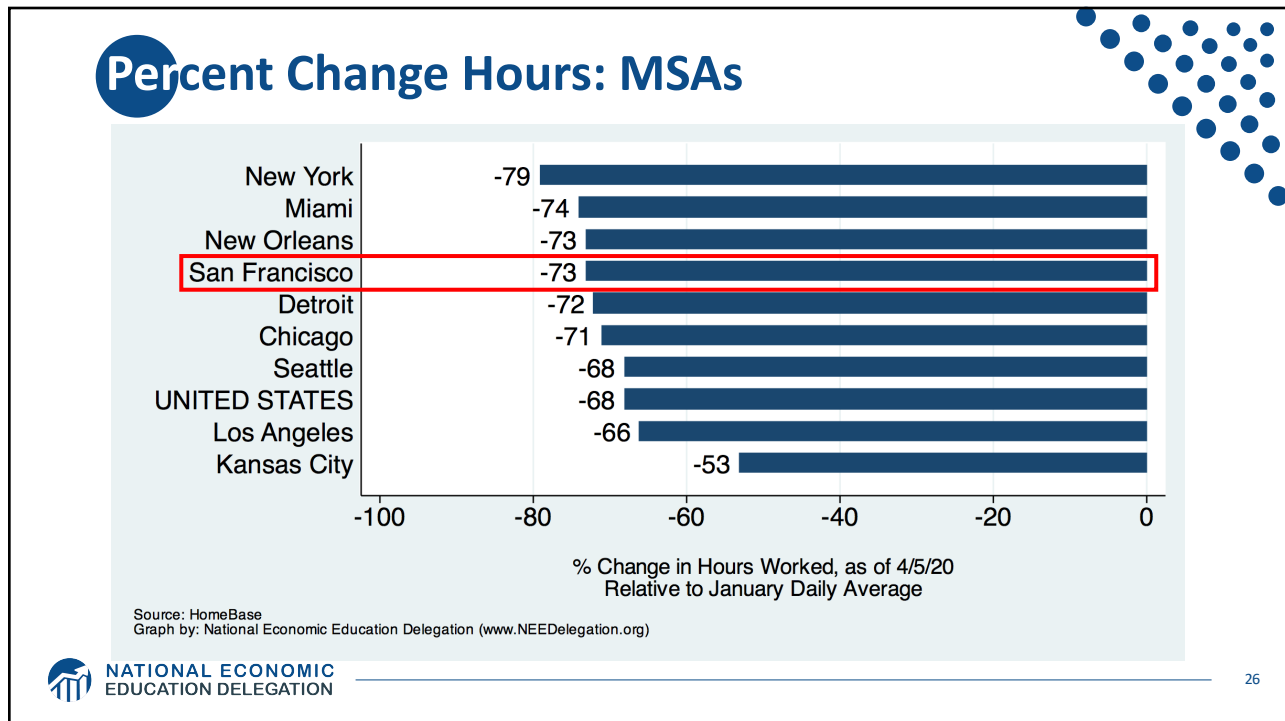
Percent Change Hours Worked



24



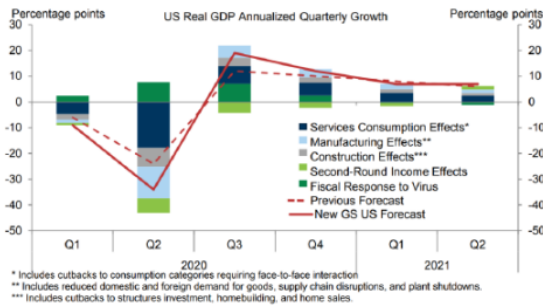
25



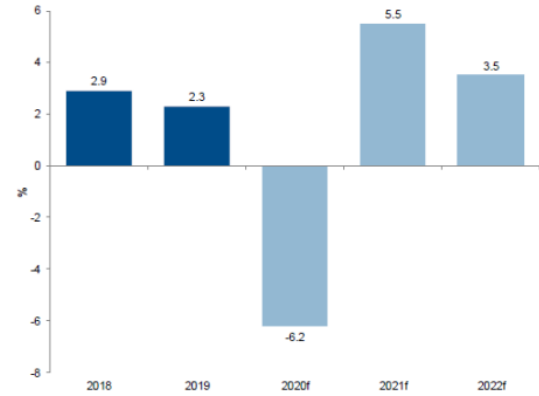
26

Goldman Forecast

1. GIR: US Real GDP Annualized Quarterly Growth Forecast



2. GIR: US Real GDP Annual Growth Forecast



Municipal Concerns

- **Taxable sales fall**
 - Visitor flow reduction (Bed Tax/TOT basically a sales tax on hotel rooms)
 - Car sales reduction
 - Manufacturing taxable sales for use tax
 - General reduction in non-essential retail (consumer durables)
- **Construction slowdown**
 - Job engine slowdown (with economic impacts)
 - May be good if housing market shock comes
 - Bad for taxable sales and local jobs and fees to be paid
- **Watching for property tax shock**
- **Costs on social assistance side likely to rise**
 - Public safety and also unrest may come
- **Unfunded liabilities becoming true liabilities?**
 - Retirements, delays and equity markets

Policy Response



29

Reactions: A Tale of Three Policies

- **Social policy**
 - Shutdowns on some industries versus others
 - Furloughs and lay-offs result
 - Vulnerable populations now more vulnerable
- **Fiscal Policy**
 - Business and taxpayer supports
 - Low-cost way to engage policy, but building danger later
- **Monetary Policy**
 - Back at the Zero Lower Bound
 - Managing markets and inflation is out with the bath water



30

Priorities for Policy

- **Policies to protect public health**
 - Long run benefits for the economy.
 - Though there may well be short run pain.
- **Policies to protect the economically vulnerable**
- **Policies to maintain resiliency of the economy**
 - Help firms stay in business, maintain ties with workers
- **Policies to stimulate aggregate demand**
 - Long run – once the economic switch is turned back on

31

Fiscal Policy Timeline

Phase	Amount (\$ bn)	Action
Phase 1 March 6	\$8	Emergency response, health care, vaccine development, prevention
Phase 2 March 18	\$100	Paid sick leave, unemployment insurance, free virus testing
Phase 3 Pending	\$250	Direct cash payments to families with income cap; \$1,200 per adult, \$500 per child
	\$250	Enhanced unemployment benefits
	\$350	Small business loans up to 250% of monthly payroll
	\$100	Corporate tax changes
	\$17	Community lending
	\$500	Loans & loan guarantees for businesses, incl. airlines
	\$180	State and local governments & Education
\$100	Hospitals	
TOTAL	\$1.5-2.5 Trillion	7-12% of GDP

32

Thoughts on Policies to Date

- **Direct cash payments**
 - Are they really getting into the hands of those most in need?
- **Payments to large corporations:**
 - Airlines and car and airplane manuf.
 - How effective are these at maintaining the structure of the economy?
- **Enough to maintain employee-employer ties?**
- **Enough for medical care?**
 - The amount spent fighting the virus is relatively small.
 - Offer to pay for all coronavirus related health care expenses?



33

Fiscal Policy: Phase 4

- **Stimulate the economy or more economic support?**
 - Duration of “shelter in place” will determine the answer.
- **Stimulate: Plenty of options:**
 - Spending for government programs:
 - Infrastructure, worker training, social programs
 - Expanded unemployment benefits.
 - Cash payments to individuals and businesses.
- **What form should it take?**
 - Depends on why the economy is slow to recover.
 - Supply side: businesses having trouble flipping the on switch?
 - Demand side: consumers reluctant to spend?



34

OHMIGOSH: How Do We Pay For It!

- **Controversy: Can we afford it?**
 - Deficit is already running at \$1T/year.
 - Debt forecast to increase to 180% of GDP by 2050 (80% today).
 - o How much debt is too much?
- **Most economists agree: It doesn't matter!**
 - Priority #1: protect public health.
 - The added debt will be a problem later.
 - o We can deal with it later.

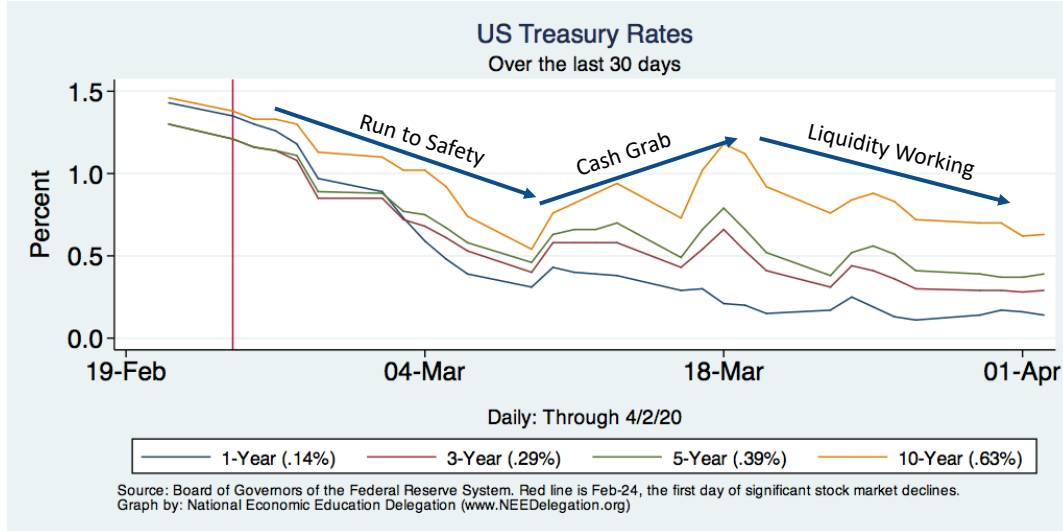
35

Monetary Policy Timeline

	Date	Action
Stabilization	March 3	Fed Funds Rate Lowered 1.75-1.5 to 1.25-1
	March 15	Fed Funds Rate Lowered to 0.25-0 Announced QE of \$700 billion
Liquidity	March 17	Commercial Paper Funding Facility Primary Dealer Credit Facility
	March 18	Money Market Mutual Fund Liquidity Facility
	March 23	Primary Market Corporate Credit Facility Secondary Market Corporate Credit Facility Term Asset-Backed Securities Loan Facility Unlimited QE
	TBA	Main Street Business Lending Program

36

US Treasury Rates: A Safe Haven?



NATIONAL ECONOMIC
EDUCATION DELEGATION

37

37

What have we learned? Positive Take-Aways

- May improve the delivery of some services.
- Encourage firms, households, governments to have a business continuity plan.
- In an integrated world, this will likely not be the last pandemic...
 - Improve social insurance for these types of events.
 - Allow more flexibility to governments and firms to respond.
- Potential learning to be carried forward:
 - Telecommuting
 - Telehealth
 - The value of the "walk around the block".



NATIONAL ECONOMIC
EDUCATION DELEGATION

38

38

Big Open Questions

- **When will the dust settle?**
- **When the dust settles:**
 - How close will ties be between businesses and their pre-CV employees?
 - How much will the business environment change?
 - More automation?
 - More telecommuting?
- **Broadly speaking: How quickly can things bounce back?**
- **What will the overall economic cost be?**



NATIONAL ECONOMIC
EDUCATION DELEGATION

39

39

Thank you!

Any Questions?

www.NEEDelegation.org

Jon D. Haveman

jon@needdelegation.org

Contact NEED: info@needdelegation.org

Submit a testimonial: www.NEEDelegation.org/testimonials.php

Become a Friend of NEED: www.NEEDelegation.org/friend.php



NATIONAL ECONOMIC
EDUCATION DELEGATION

40

40