



# COVID-19: Economic Implications and Policy Response

COO Forum

April 16, 2020  
Jon Haveman, Ph.D.  
Executive Director, NEED



1

## National Economic Education Delegation

### • Vision

- One day, the public discussion of policy issues will be grounded in an accurate perception of the underlying economic principles and data.

### • Mission

- NEED unites the skills and knowledge of a vast network of professional economists to promote understanding of the economics of policy issues in the United States.

### • NEED Presentations

- Are **nonpartisan** and intended to reflect the consensus of the economics profession.

2

## Who Are We?

- **Honorary Board: 48 members**

- 2 Fed Chairs: Janet Yellen, Ben Bernanke
- 6 Chairs Council of Economic Advisers
  - o Furman (D), Rosen (R), Bernanke (R), Yellen (D), Tyson (D), Goolsbee (D)
- 3 Nobel Prize Winners
  - o Akerlof, Smith, Maskin

- **Delegates: 500+ members**

- At all levels of academia and some in government service
- All have a Ph.D. in economics
- Crowdsource slide decks
- Give presentations

- **Global Partners: 45 Ph.D. Economists**

- Aid in slide deck development



NATIONAL ECONOMIC  
EDUCATION DELEGATION

3

3

## Available NEED Topics Include:

- **US Economy**
- **Climate Change**
- **Economic Inequality**
- **Economic Mobility**
- **US Social Policy**
- **Trade and Globalization**
- **Trade Wars**
- **Immigration Economics**
- **Housing Policy**
- **Federal Budgets**
- **Federal Debt**
- **2017 Tax Law**
- **Autonomous Vehicles**



NATIONAL ECONOMIC  
EDUCATION DELEGATION

4

4

## Credits and Disclaimer

- **This slide deck was authored by:**

- Jon D. Haveman, NEED
- Scott Baier, Clemson University

- **Disclaimer**

- NEED presentations are designed to be nonpartisan.
- It is, however, inevitable that the presenter will be asked for and will provide their own views.
- Such views are those of the presenter and not necessarily those of the National Economic Education Delegation (NEED).



5

## Outline

- **What is this?**
- **Evidence of Impact**
- **Government Policy**
- **What to expect going forward**



6

## What is this?

- **A natural disaster – with important twists**
  - Global
  - Duration is unpredictable
  - Economic toll is enormous and potentially durable
- **A health crisis with enormous economic implications.**
  - A perfect storm of economic difficulty
    - Supply side
    - Demand side
    - Financial
  - Without a culprit



7

## Process for Dealing with a Natural Disaster

- **Mitigation of effects**
- **Tend to the vulnerable**
- **Short up structures**
- **Rebuild**

This crisis requires the same approach and sequence.

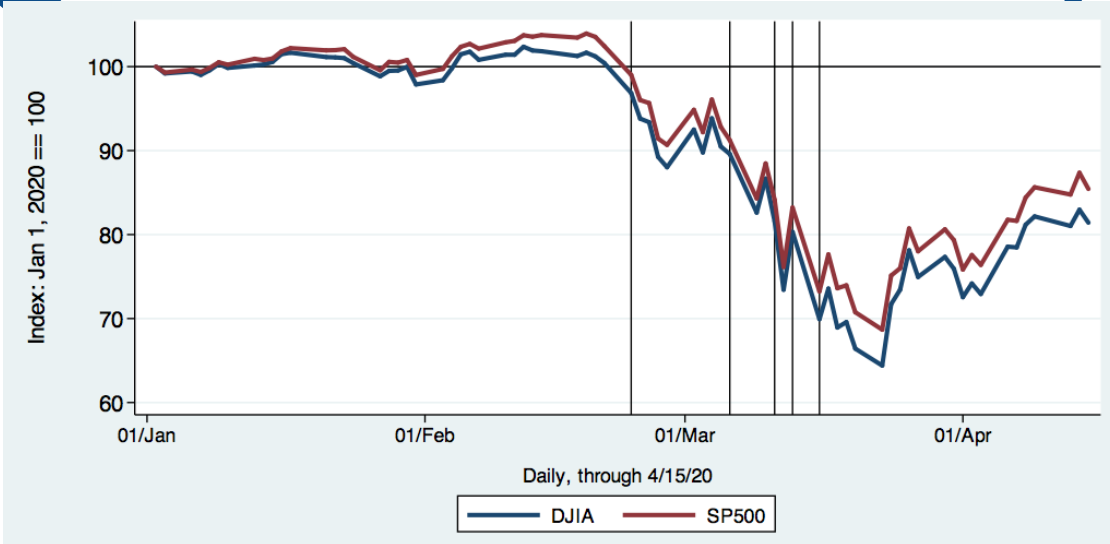


8

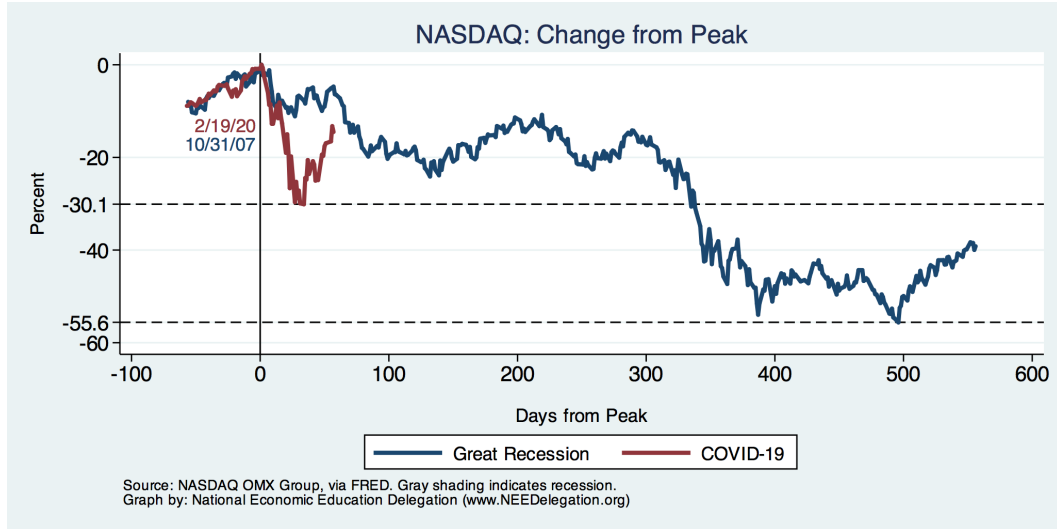
# Evidence of Impact

- **Early metrics:**
  - Stock markets
  - Jobs
    - Job creation/destruction
    - Hours worked
    - Unemployment
  - Car and Truck Sales
  - Retail Sales

# DJIA and S&P 500

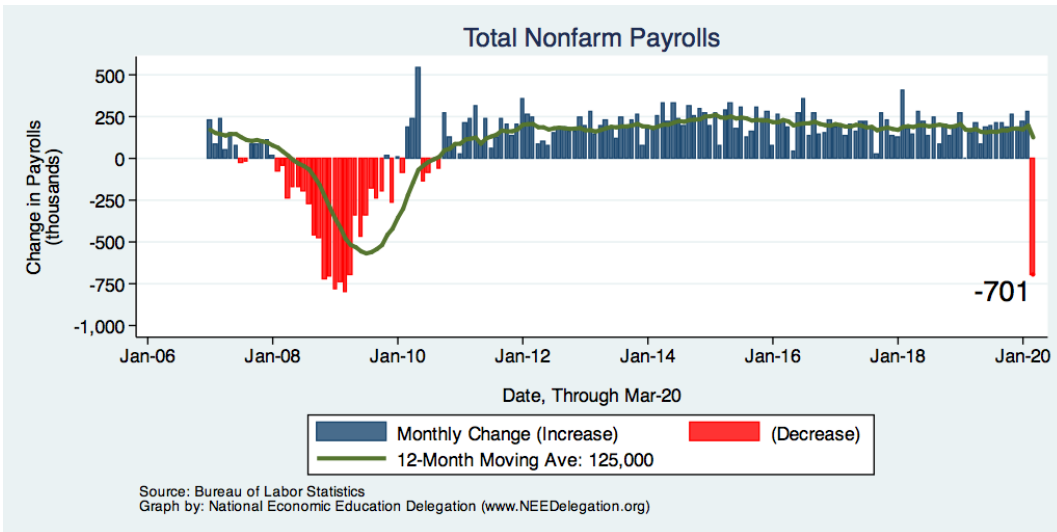


# NASDAQ: Then (Great Recession) and Now



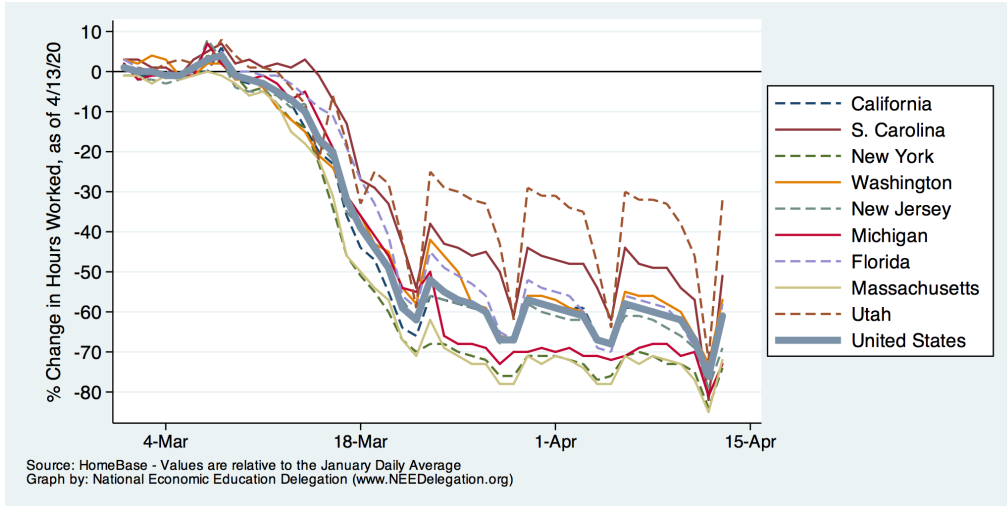
11

# Monthly Changes in Nonfarm Employment



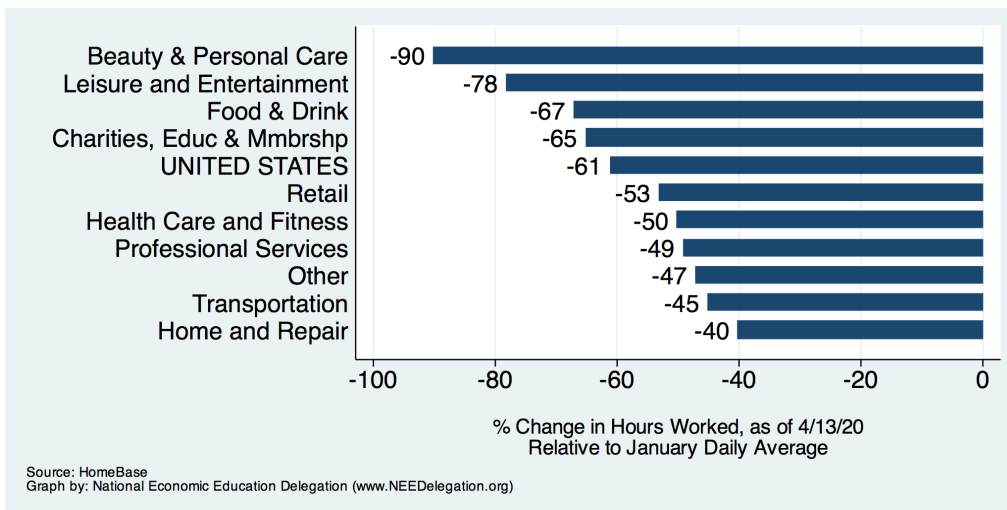
12

## Change in Hours Worked



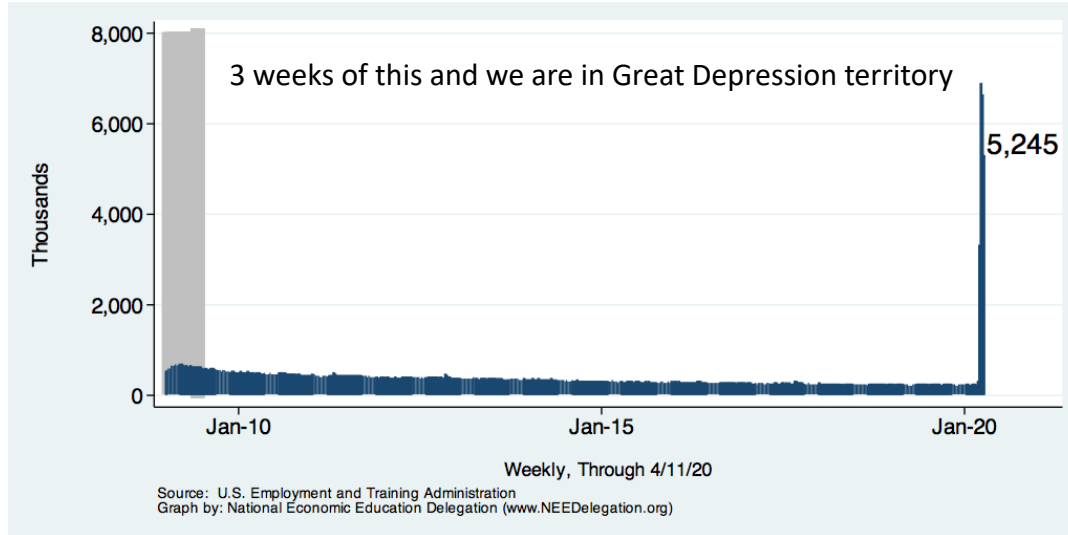
13

## Change in Hours Worked



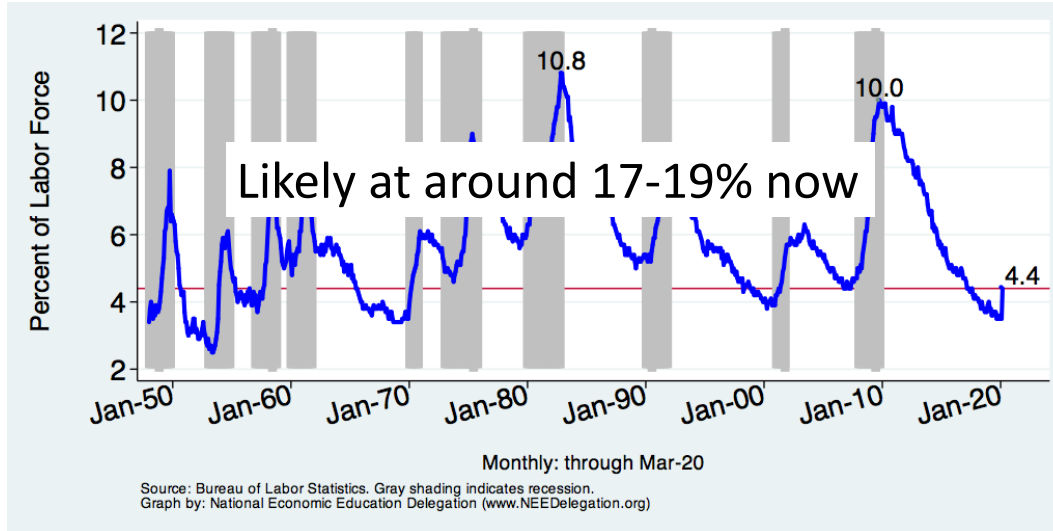
14

## Weekly New Unemployment Claims



15

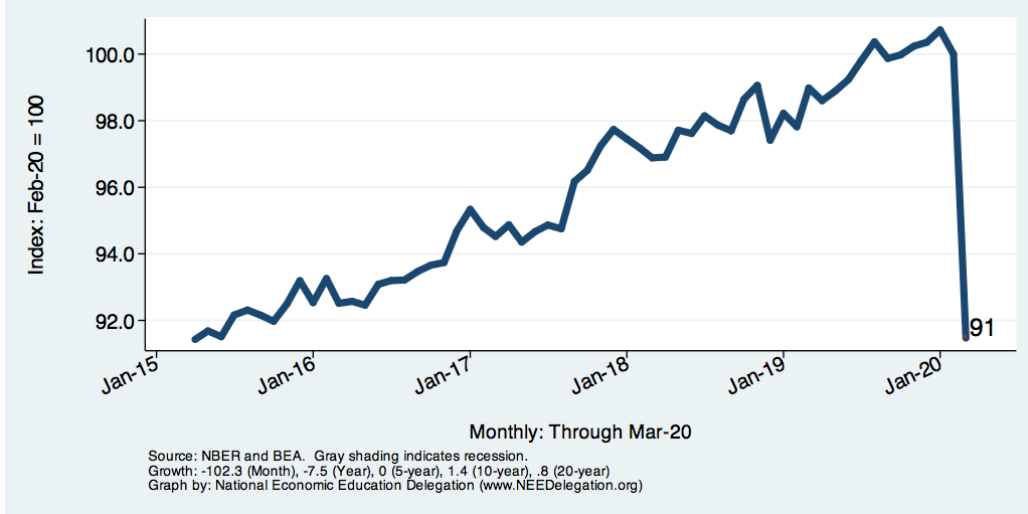
## Unemployment Rate



16



# Retail Sales



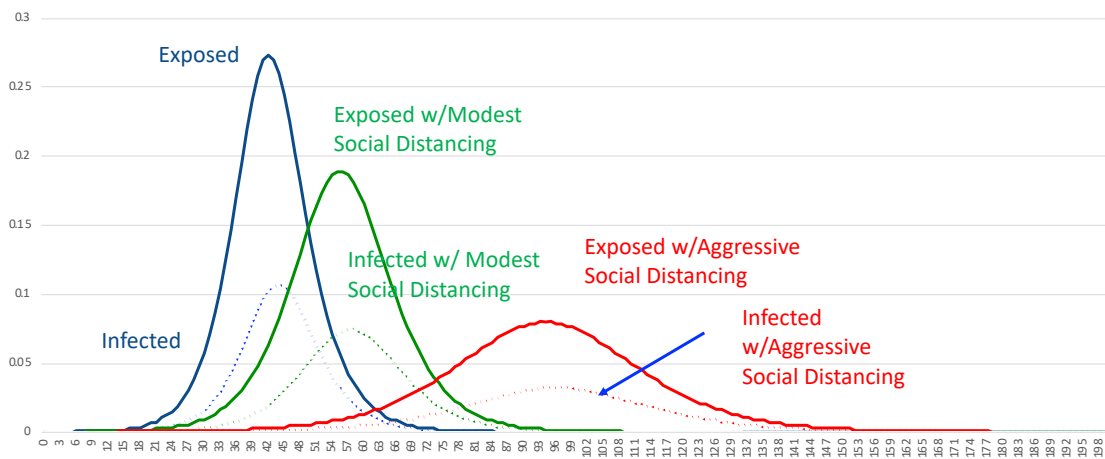
# Policy Response

# A Tale of Three Policies Efforts

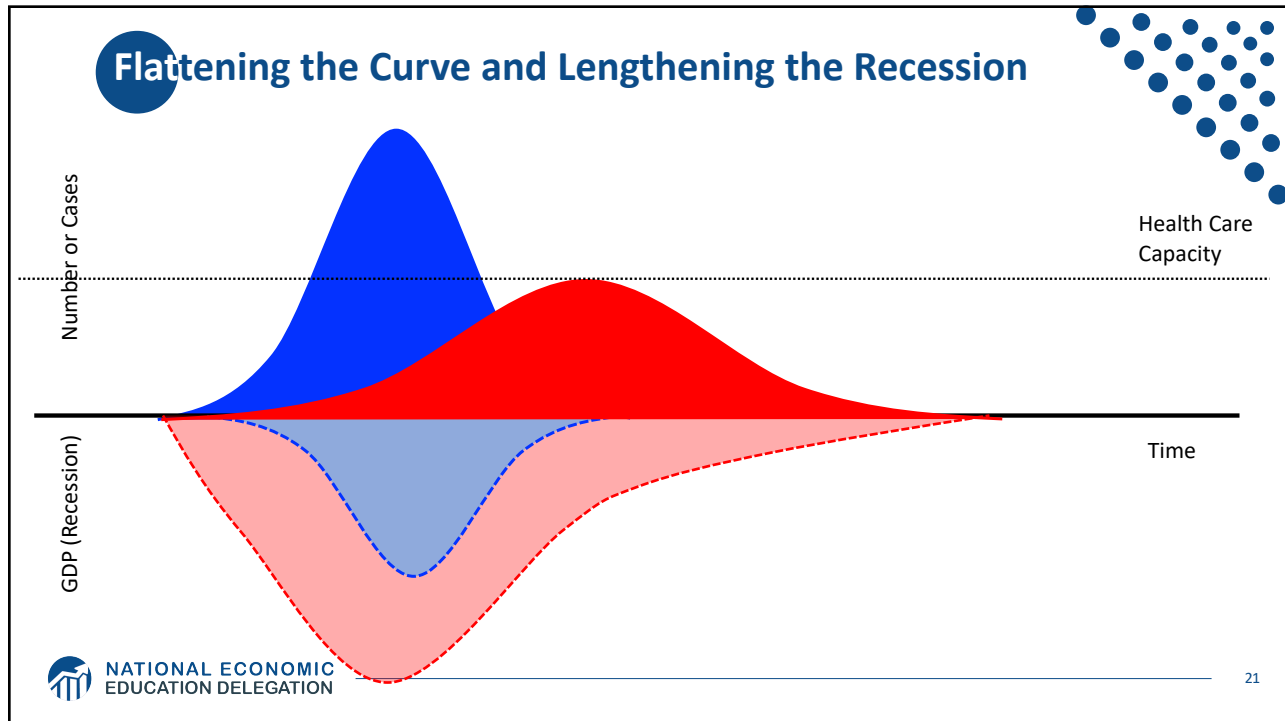
- **Social policy: Social Distancing**
  - Shutdowns on some industries versus others
  - Furloughs and lay-offs result
  - Vulnerable populations now more vulnerable
- **Fiscal Policy**
  - Business and taxpayer supports
  - Low-cost way to engage policy, but building danger later
- **Monetary Policy**
  - Back to Zero interest rates
  - Managing markets and inflation is out with the bath water

19

# Exposed and Infected and Social Distance



20



21

## BOTE Cost Benefit Analysis

*BOTE: Back Of The Envelope*

- **BENEFITS of social distancing:**
  - \$7 million/life and 600,000 lives saved (\$4.2 trillion)
  - Long term health issues avoided: 2 million at \$500,000 (\$1 trillion)
  - **Total Benefit of Social Distancing: \$5.2 Trillion**
- **COSTS of “Shelter in Place” or “Lockdown”**
  - There are about 70+ workdays in a quarter (plus March).
  - **The cost of a “lockdown” is roughly \$1.3 Trillion**

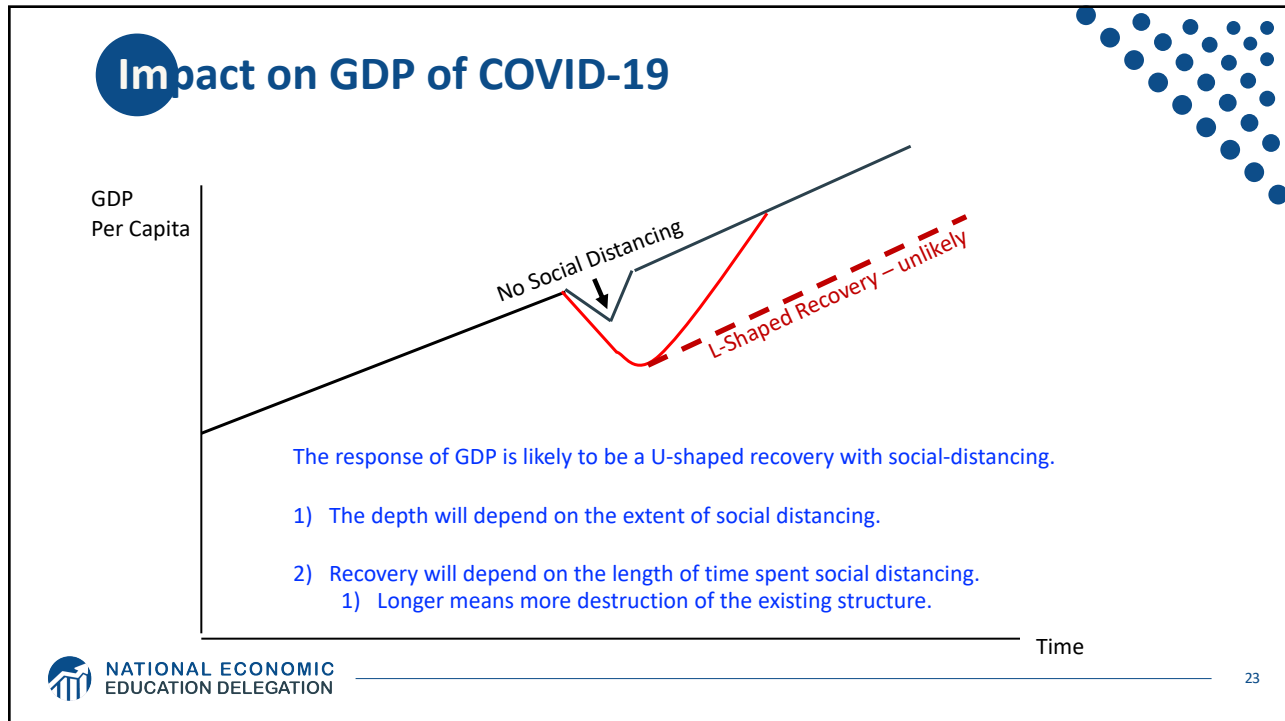
**Benefit: \$5.2 trillion > Cost: \$1.3 trillion**

22

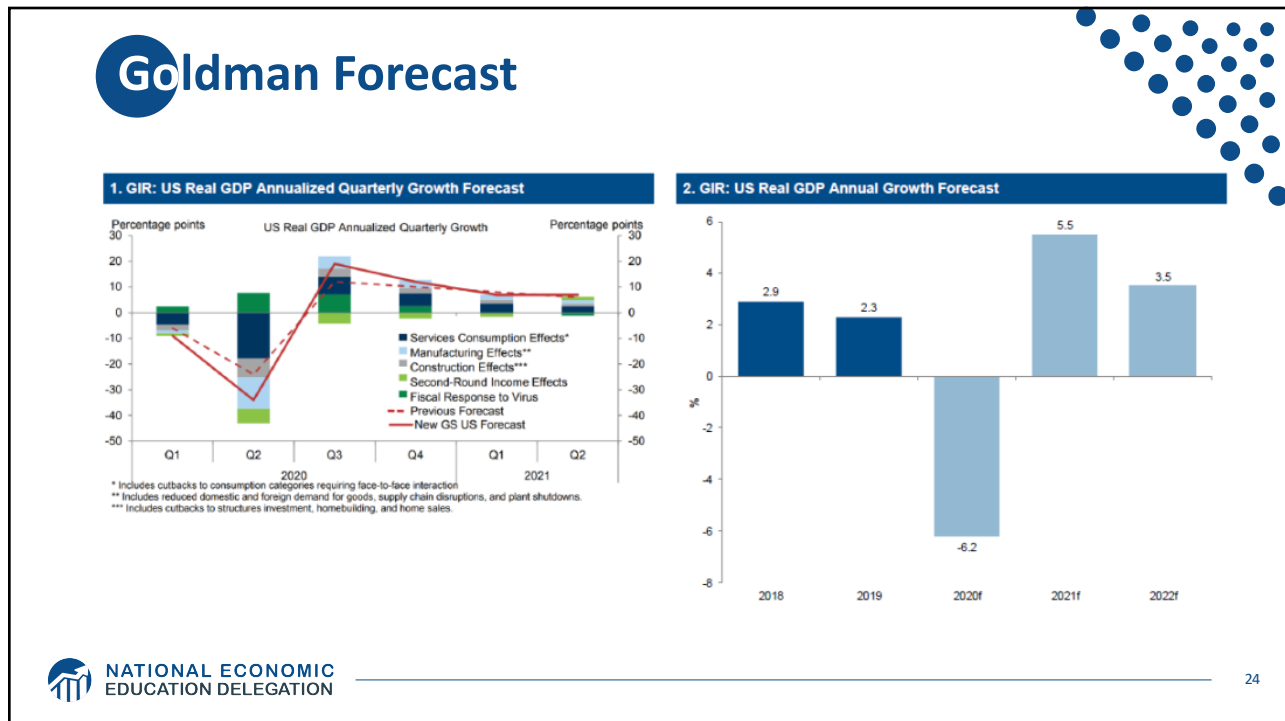
NATIONAL ECONOMIC EDUCATION DELEGATION

<https://twitter.com/BetseyStevenson/status/1242180499566669828>

22



23



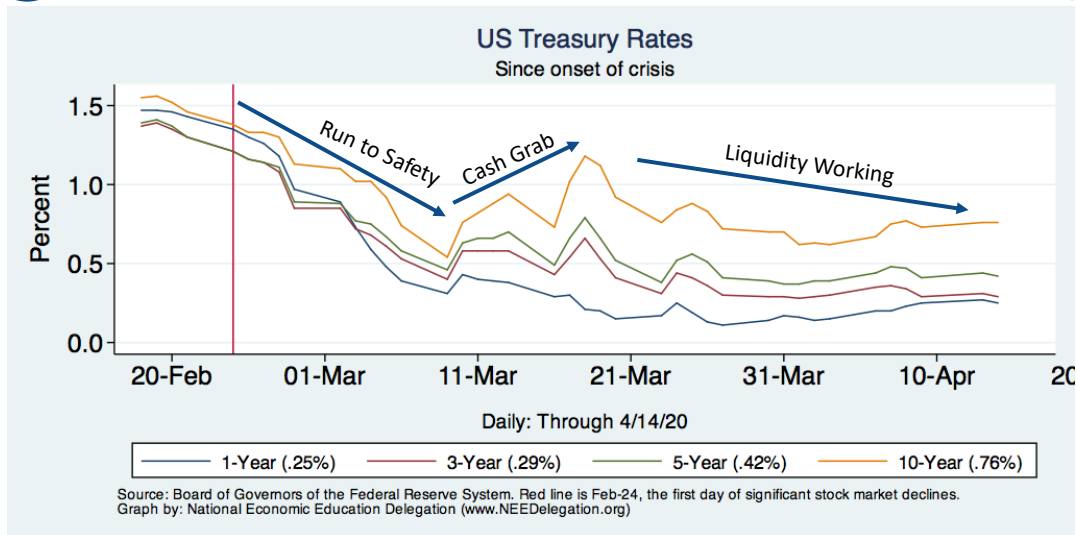
24

## Priorities for Government Policy

- **Policies to protect public health**
  - Long run benefits for the economy.
  - Though there may well be short run pain.
- **Policies to protect the economically vulnerable**
- **Policies to maintain structure of the economy**
  - Help firms stay in business, maintain ties with workers.
- **Policies to stimulate aggregate demand (rebuild)**
  - Long run – once the economic switch is turned back on.

25

## US Treasury Rates: A Safe Haven?



26

## What does the future bring?

- **We won't need "shades" for quite some time.**
- **Further government policy**
  - Buoy individuals, financial sector, and structures.
  - Ultimately stimulus – but not soon.
- **Structural changes to the economy?**
  - More telecommuting
  - More rapid adoption of technology
  - The way we purchase things



NATIONAL ECONOMIC  
EDUCATION DELEGATION

27

27

## Thank you!

## Any Questions?

[www.NEEDelegation.org](http://www.NEEDelegation.org)

Jon D. Haveman

Jon@NEEDelegation.org

Contact NEED: [info@NEEDelegation.org](mailto:info@NEEDelegation.org)

Submit a testimonial: [www.NEEDelegation.org/testimonials.php](http://www.NEEDelegation.org/testimonials.php)

Become a Friend of NEED: [www.NEEDelegation.org/friend.php](http://www.NEEDelegation.org/friend.php)



NATIONAL ECONOMIC  
EDUCATION DELEGATION

28

28

## Fiscal Policy Timeline

Phase	Amount (\$ bn)	Action
<b>Phase 1</b> March 6	\$8	Emergency response, health care, vaccine development, prevention
<b>Phase 2</b> March 18	\$100	Paid sick leave, unemployment insurance, free virus testing
<b>Phase 3</b> Pending	\$250	Direct cash payments to families with income cap; \$1,200 per adult, \$500 per child
	\$250	Enhanced unemployment benefits
	\$350	Small business loans up to 250% of monthly payroll
	\$100	Corporate tax changes
	\$17	Community lending
	\$500	Loans & loan guarantees for businesses, incl. airlines
	\$180	State and local governments & Education
\$100	Hospitals	
<b>TOTAL</b>	<b>\$1.5-2.5 Trillion</b>	<b>7-12% of GDP</b>

29

## Monetary Policy Timeline

	Date	Action
Stabilization	March 3	Fed Funds Rate Lowered 1.75-1.5 to 1.25-1
	March 15	Fed Funds Rate Lowered to 0.25-0 Announced QE of \$700 billion
Liquidity	March 17	Commercial Paper Funding Facility Primary Dealer Credit Facility
	March 18	Money Market Mutual Fund Liquidity Facility
	March 23	Primary Market Corporate Credit Facility
		Secondary Market Corporate Credit Facility
		Term Asset-Backed Securities Loan Facility Unlimited QE
TBA	Main Street Business Lending Program	

30