

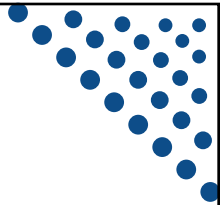
Osher Lifelong Learning Institute, Winter 2023 **Contemporary Economic Policy Issues**

University of Rhode Island
January-February, 2023

Host: Jon Haveman, Ph.D.
National Economic Education Delegation



NATIONAL ECONOMIC
EDUCATION DELEGATION



Available NEED Topics Include:

- Healthcare Economics
- Climate Change
- Economic Inequality
- Economic Mobility
- US Social Policy
- Trade and Globalization
- Minimum Wage
- The U.S. Economy
- Immigration Economics
- Housing Policy
- Federal Budgets
- Federal Debt
- Black-White Wealth Gap
- Autonomous Vehicles



NATIONAL ECONOMIC
EDUCATION DELEGATION

Course Outline

• Contemporary Economic Policy

- Week 1 (1/10): Economic Update (Geoffrey Woglom, Amherst College)
- Week 2 (1/17): Monetary Economics (Geoffrey Woglom)
- Week 3 (1/24): Trade and Globalization (Alan Deardorff, Univ. of Michigan)
- Week 4 (1/31): Trade Deficits and Exchange Rates (Alan Deardorff)
- **Week 5 (2/7): Autonomous Vehicles (Jon Haveman, NEED)**



3

Submitting Questions

- **Please submit questions of clarification in the chat.**
 - I will try to handle them as they come up.
- **We will do a verbal Q&A once the material has been presented.**
- **OLLI allowing, we can stay beyond the end of class to have further discussion.**
- **Slides will be available from the NEED website tomorrow (https://needelegation.org/delivered_presentations.php)**



4

OLLI – University of Rhode Island

Driving Change – Autonomous Vehicles’ Big Impact

National Economic Education Delegation

Jon Haveman, Ph.D.

February 7, 2023



NATIONAL ECONOMIC
EDUCATION DELEGATION

5

Credits and Disclaimer

- **This slide deck was authored by:**
 - Jon Haveman, NEED
- **This slide deck was reviewed by:**
 - Ronald Fisher, Michigan State University
 - William F. Fox, University of Tennessee, Knoxville
- **Disclaimer**
 - NEED presentations are designed to be nonpartisan.
 - It is, however, inevitable that the presenter will be asked for and will provide their own views.
 - Such views are those of the presenter and not necessarily those of the National Economic Education Delegation (NEED).



NATIONAL ECONOMIC
EDUCATION DELEGATION

6

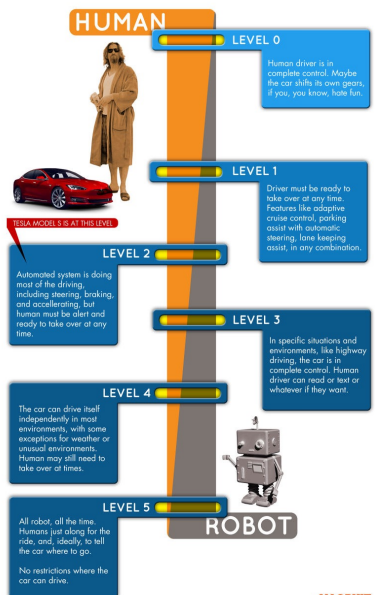
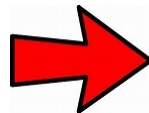
6

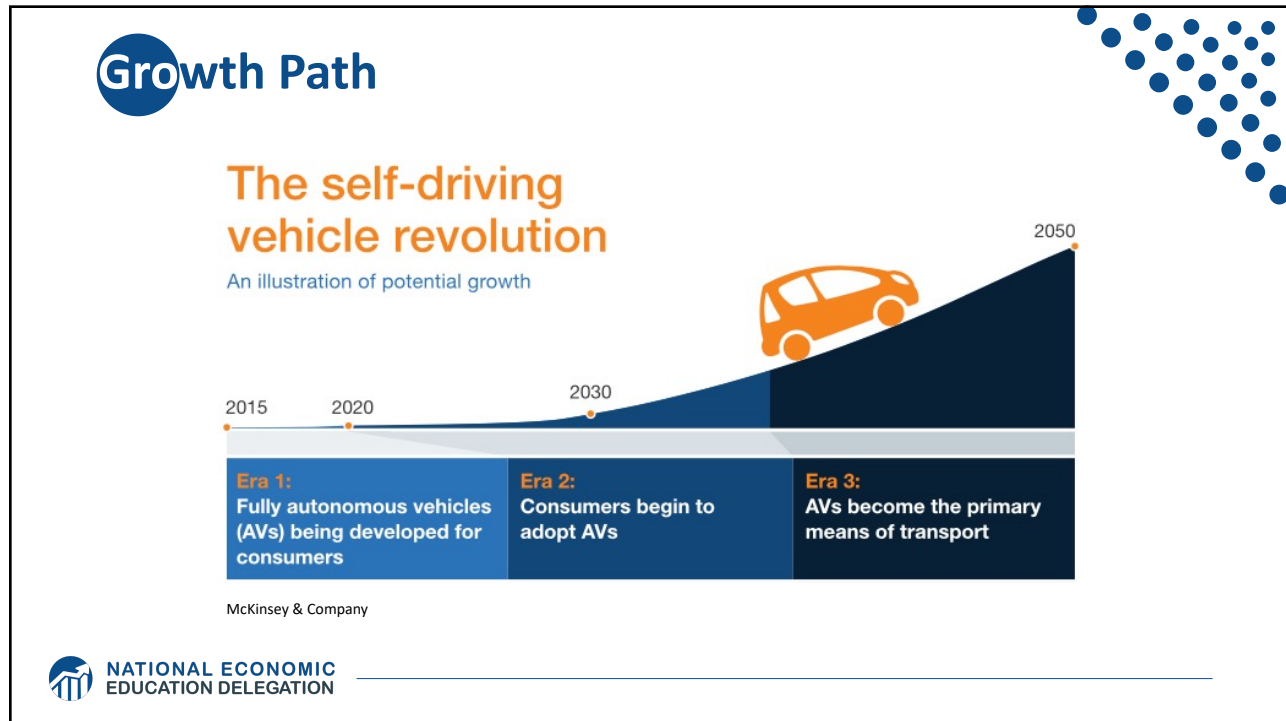
Outline

- Where does the AV path lead?
- Policy/Planning Issues
- Major Economic/Development Changes

Autonomous Taxonomy

SAE AUTONOMY LEVELS





9

Three Important Questions:

1. When will Transportation as a Service (TaaS) be available?
2. How quick will the transition be?
3. What will the future look like?

NATIONAL ECONOMIC EDUCATION DELEGATION

10

10

WHEN?

What do the headlines say?



NVIDIA to introduce level-4 enabling system by 2018



First autonomous Toyota to be available in 2020



Volkswagen

Volkswagen expects first self driving cars on the market by 2019



Audi

Audi to introduce a self-driving car by 2020



TESLA MOTORS

Elon Musk now expects first fully autonomous Tesla by 2019, approved by 2021



NATIONAL ECONOMIC EDUCATION DELEGATION

40+ Corporations Working On Autonomous Vehicles



TOYOTA



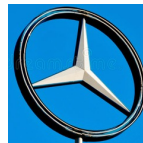
WAYMO



HONDA



Audi



NATIONAL ECONOMIC EDUCATION DELEGATION

WHEN?

What is possible?

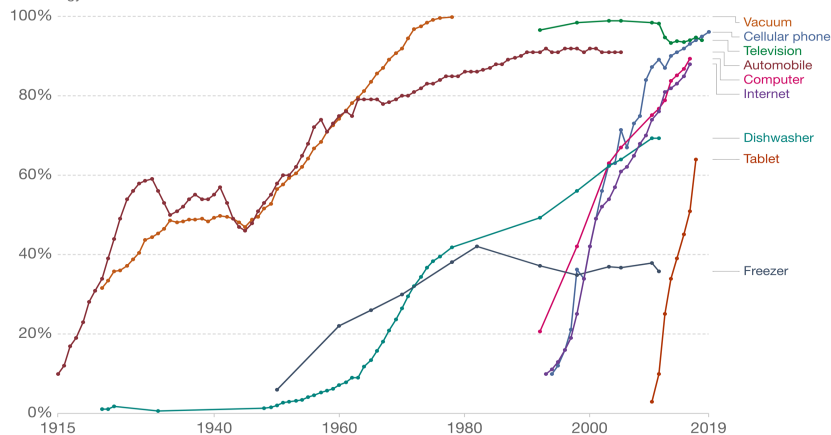
- **By 2025 (?)**
- **Potentially 95% of VMT by 2035.**
 - Last 5% may be very difficult to achieve.
- **Is this possible?**
 - Horses to cars: 10 years – early 1900s
 - But adoption of EVs is so slow!
 - Adoption of AVs will be rapid.



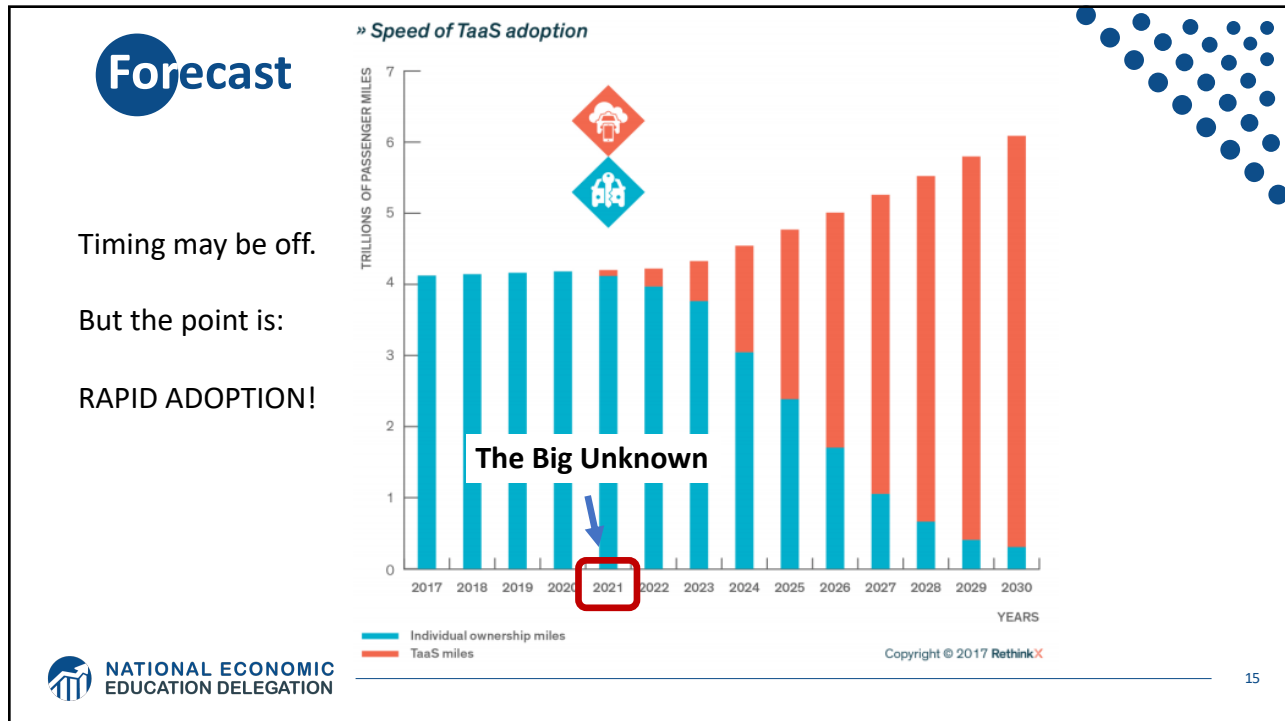
Rate of Technology Adoption – Faster!

Technology adoption in US households, 1915 to 2019

Technology adoption rates, measured as the percentage of households in the United States using a particular technology.



Source: Comin and Hobijn (2004) and others
 Note: See the sources tab for definitions of household adoption, or adoption rates, by technology type.



15

Waymo's self-driving cars are now available on Lyft's app in Phoenix

Lyft and Motional's all-electric robotaxi service is now live in Las Vegas

Singapore's self-driving cars can now be hailed with a smartphone

NuTonomy joins forces with 'the Uber of Southeast Asia'


Cruise is now charging for rides in its driverless vehicles in San Francisco

NATIONAL ECONOMIC EDUCATION DELEGATION

16

16

Waymo is Headed to New York!



Waymo driving territory

New York City

Image courtesy of Waymo

NATIONAL ECONOMIC EDUCATION DELEGATION

17

17

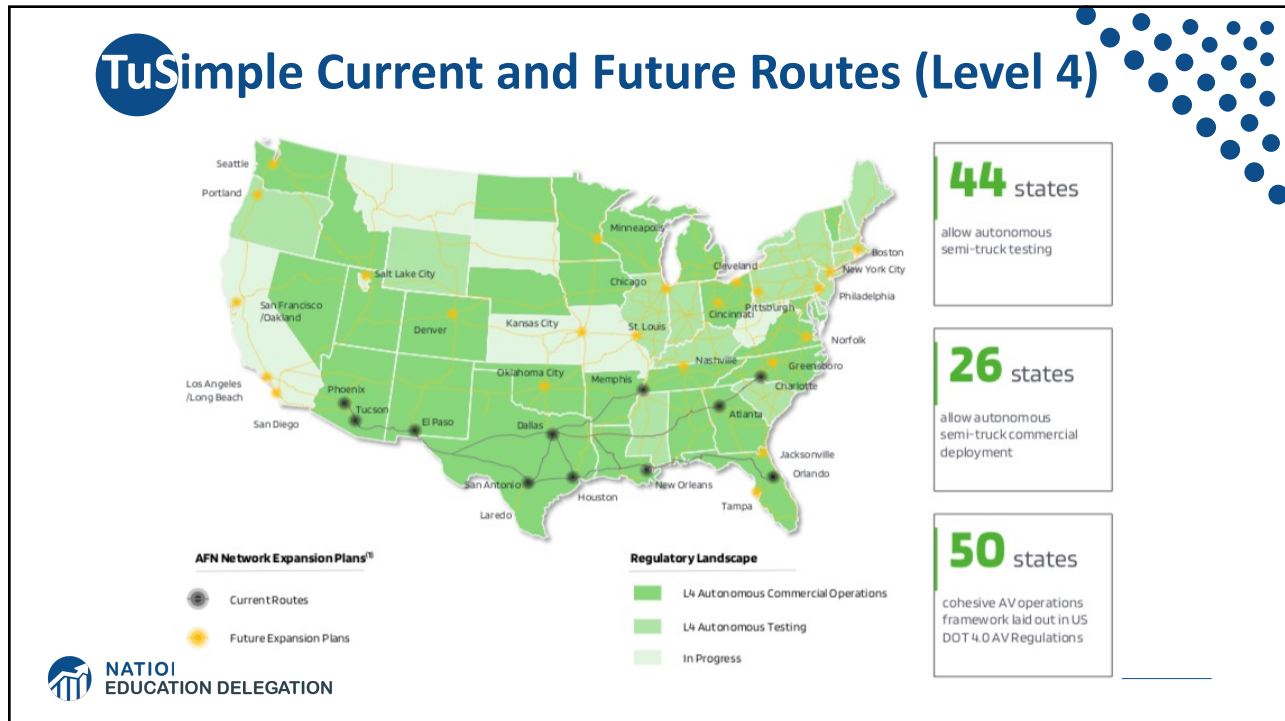
Trucking – Highly Fertile Ground

- **Long haul trucking is likely the first place we will see it adopted.**
 - Reduces costs associated with drivers.
 - End run around limits on hours of driving.
- **Where does it stand?**
 - Lots of trials underway.
 - TuSimple – actively building a long haul network.
 - Waymo – focused more on last mile/local delivery.

NATIONAL ECONOMIC EDUCATION DELEGATION

18

18



19

Actively Pursuing Autonomous Local Delivery

- Dominos
- Walmart
- Amazon
- CVS Pharmacy
- Stop and Shop
- Postmates
- Kroger

NATIONAL ECONOMIC EDUCATION DELEGATION

20

What will the future look like?



21

This:



22

But, will it be:



NATIONAL ECONOMIC
EDUCATION DELEGATION

23

Hell

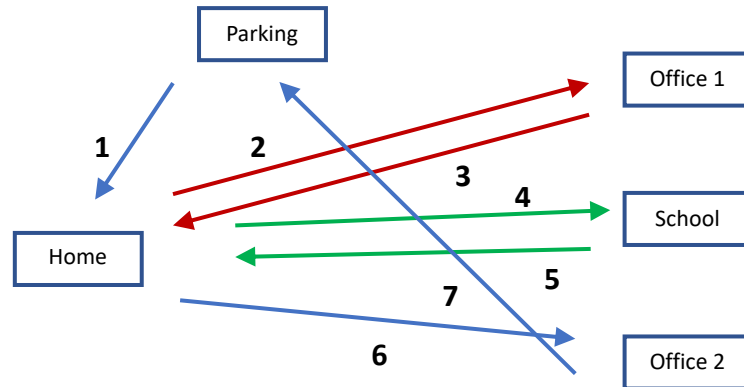
- **Primarily individual private car ownership**
 - Much as today.
- **Internal combustion engines**
- **Why Hell?**
 - Dramatically increased VMT and pollution.
 - Potentially increased congestion.
 - Parking



NATIONAL ECONOMIC
EDUCATION DELEGATION

24

Two Adults and a Child: Morning Miles



And this is just the morning.....

25

Heaven



- **Vehicle ownership will be very limited**
 - Private ownership for those with specialized vehicle needs.
 - Fleet ownership will serve everybody else.
- **Engines: electric**
- **Insurance: product liability**
- **Not clear when we will get there, but this is the likely model.**
 - 2030 for widespread adoption in many regions.

26

Why is this Heaven?

- **Not only autonomous, but:**
 - Shared
 - Connected
 - Green
- **Far fewer cars in existence.**
 - Better resource utilization: steel, rubber, aluminum, and land!
- **VMT could go up or down, but more productive than in Hell.**
- **Congestion effects – unclear, but likely reduced.**
 - Right-sized vehicles, platooning, sharing, V2V communication
- **Minimal need for parking.**

Economics Drives Transition: Private

- **Adoption dividend for private individuals**
 - Eliminate car ownership
 - Ave annual cost of owning a car: \$9,666 (2021)
 - Cost per mile will fall: \$0.64 to \$0.19
 - Repurpose your garage
 - \$50,000 from transition to bedroom
- **Time recovery**
 - 50% of the SF Bay Area workforce has a commute in excess of 30 minutes.

Average Costs Per Mile

Miles per Year	10k	15k	20k
Average Cost	82¢	64¢	55¢

Economics Drives Transition: Public

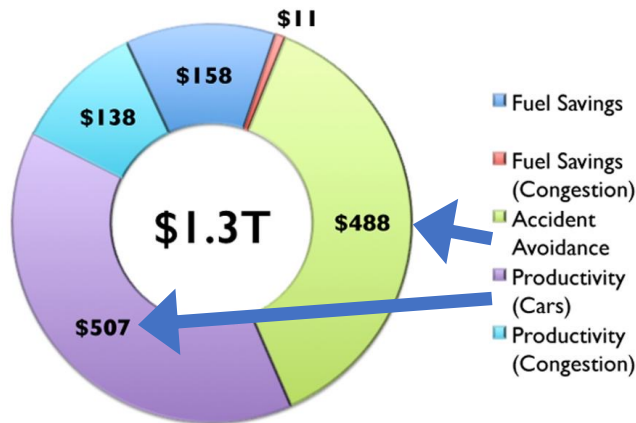
- Economic and social costs associated with human drivers are enormous:

- ACCIDENTS:
 - Drive 25% of congestion.
 - Result in 40,000 deaths.
 - And 2 million injuries.
 - 90+% caused by human error.
- Increased productivity from not driving.
- Costs of human drivers estimated at up to \$1.3 TRillion each year



Potential Savings

Potential US Savings (\$B)



Public Policy/Planning Issues

- **Government buy-in:**
 - Essential – gov't must encourage progress
 - Difficult – because of displacement issue
- **Important transitional issues:**
 - What infrastructure should be developed?
 - What to do about public transportation?
 - What to do with all of the parking spaces?



NATIONAL ECONOMIC
EDUCATION DELEGATION

31

Encourage Change

- **Mobility and equity considerations**
 - Elderly/disabled/impovertished
- **Safety:** only way to reduce traffic fatalities is by coordinated effort
- **Productivity:** reduced congestion
- **Environment:** speed transition to electric vehicles

These are all societal benefits that come about too slowly
if the private market is left to itself.



NATIONAL ECONOMIC
EDUCATION DELEGATION

32

Mobility and Equity

- **Mobility**

- Handicapped
- Elderly
- Lower income

- **Equity**

- Public Transportation often does not work well for low-income workers/residential workers
 - Does not go from residential to residential, but from residential to commercial



NATIONAL ECONOMIC
EDUCATION DELEGATION

33

Safety and Productivity



NATIONAL ECONOMIC
EDUCATION DELEGATION

34

Environment



NATIONAL ECONOMIC
EDUCATION DELEGATION

35

Environmental Implications Depends: Heaven or Hell

- **Improved resource utilization**
- **More efficient travel**
 - Right sized vehicles
 - Optimized routes
 - Reduced congestion
 - No searching for parking
- **Increased VMT**
- **Cleaner technologies**
 - Electric
 - Lighter vehicles
- **Energy use of onboard electronics**
 - Weight and functional
- **Increased urban sprawl**

Bottom line: push governments at all levels to embrace and to implement policies deterring private vehicle ownership and zero passenger miles



NATIONAL ECONOMIC
EDUCATION DELEGATION

36

What Changes Will This Bring?

- Disposable income
- Government finances
- Transportation demand
- Infrastructure
- Housing
- Public transportation
- Employment
- Parking

Potentially dramatic improvements in infrastructure planning and maintenance -
Data sharing and integration



NATIONAL ECONOMIC
EDUCATION DELEGATION

37

Disposable Income



- Costs \$9,666 to own a car
- Will cost \$3,000 to use TaaS
- Net increase in disposable income of > \$6,000
- Spread across all households: more than \$1 trillion in new spending in the economy
- Major boost to economic activity
 - CREATING JOBS!



NATIONAL ECONOMIC
EDUCATION DELEGATION

38

Government Finances



- **Government finances thrown for a loop:**

- Revenues up and down:
 - Parking revenue, tickets, traffic violation revenues
 - More commercial, retail and residential space
- Less spending on road development
- More (maybe less) spent on road maintenance
 - Fewer road miles
 - but perhaps more VMT

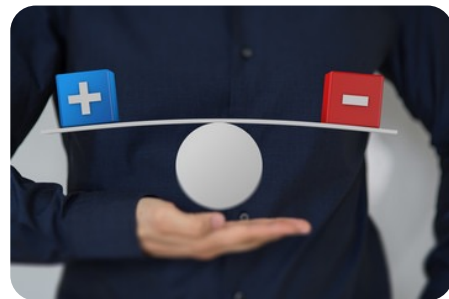
Transportation Demand

- **Demand for transportation will likely increase significantly: price falls, demand rises**

- Commutes may increase in distance, but not necessarily in duration
- Zero passenger trips will arise
 - Deliveries

- **At the same time, demand for roadway lane-miles will likely decrease**

- AVs make significantly more efficient use of space
- Front to back and side to side



Infrastructure

- **Focus of transportation infrastructure:**

- Currently on expansion
- Will turn toward:
 - Maintenance
 - Signage and striping has to be robust
 - TaaS providers push for fewer potholes?
 - Adding technology
 - Stop lights will be digital as well as visual
- Some will disappear: Signs!



NATIONAL ECONOMIC
EDUCATION DELEGATION

41

Housing



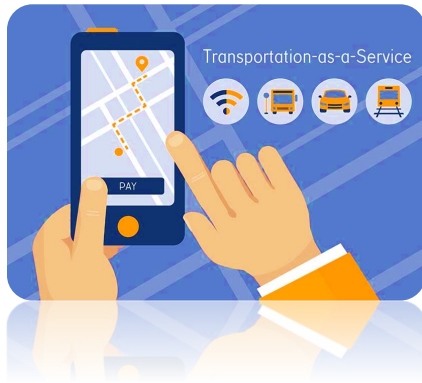
- **Housing is suddenly easier to build**
 - Issue of traffic congestion is significantly reduced.
 - Space for new housing is available where parking lots used to be.
- **Existing houses can now accommodate more people: garage to bedroom conversions.**



NATIONAL ECONOMIC
EDUCATION DELEGATION

42

Public Transportation



- **Ambiguous implications for public transportation**
- **Demand may:**
 - Shrink because of low cost of TaaS
 - Grow because last mile problem is solved
- **Extensions may be added through contract with TaaS company**



NATIONAL ECONOMIC
EDUCATION DELEGATION

43

Employment

- **Massive job displacement/relocation (Millions!):**
 - Drivers of all varieties: truck, taxi, delivery...
 - Car production jobs, car parts production jobs
 - Gas station, vehicle repair, and body shop
 - Police and fire
 - Health care workers
 - And so on...



NATIONAL ECONOMIC
EDUCATION DELEGATION

44

Employment (con't)



- **What jobs will be created?**
 - IT jobs
 - Retail/Production jobs
 - ??
- **Always easier to identify things that will go away than to identify what will pop in its place.**
- **Regardless of where they are created, training programs will be crucial to the transition.**



NATIONAL ECONOMIC
EDUCATION DELEGATION

45

Parking

- **Greatly reduced demand for parking lots.**
- **Service providers will own parking lots in strategic places.**
- **Street parking will largely be a thing of the past.**
 - More green space in cities
- **Shopping mall and apartment parking?**
 - Converted to housing?



NATIONAL ECONOMIC
EDUCATION DELEGATION

46

Freeing Up Urban Space from Parking

- **Los Angeles: 14% of incorporated land area**
 - 200 Square miles
- **San Francisco: 275,450 on-street parking spaces**
 - Enough to parallel-park a line of cars 60 miles longer than California's entire 840-mile coastline
- **Nationwide: (estimate) 500 million spaces**
 - That's larger than Delaware and Rhode Island combined.
 - Could be as many as 2 billion (add in Connecticut and Vermont).



Potential Problems and Concerns

- **Expansion of the electric grid to provide sufficient capacity.**
- **Mining for rare earth minerals for batteries.**
- **Hacking of autonomous vehicles for nefarious purposes.**
- **Competition in service provision in some markets.**
- **And many more...**



Summary of Change

- Massive employment upheaval.
- Local government finances will look very different.
- Housing will be easier to build and more plentiful.
- Parking conversions will be commonplace.
- Demand for transportation infrastructure will likely decline.
 - Transportation infrastructure technology will be a booming business.
- Demand for public transportation may well decline.
- Coming likely sooner rather than later!



NATIONAL ECONOMIC
EDUCATION DELEGATION

49

Thank you!

Any Questions?

www.NEEDelegation.org

Jon D. Haveman

Jon@NEEDelegation.org

Contact NEED: info@NEEDelegation.org

Submit a testimonial: www.NEEDelegation.org/testimonials.php

Become a Friend of NEED: www.NEEDelegation.org/friend.php



NATIONAL ECONOMIC
EDUCATION DELEGATION

50

50